

TCP-1 β (A-5): sc-373769

BACKGROUND

The protein TCP-1 (t complex polypeptide 1) is a subunit of the heterooligomeric complex CCT (chaperonin containing TCP-1) present in the eukaryotic cytosol. The CCT of eukaryotic cytosol is composed of eight different subunit species, TCP-1 α , β , γ , δ , ϵ , ζ , η and θ , each encoded by a different gene. Two ζ subunits have been described: TCP-1 ζ (also designated TCP-1 ζ 1) and TCP-1 ζ 2. TCP-1 subunits are proposed to have independent functions in folding its *in vivo* substrates, the Actins and Tubulins. TCP-1 was first identified in the mouse as relevant for tail-less and embryonic lethal phenotypes. Sequences homologous to TCP-1 have been isolated in several other species, and the yeast TCP-1 has been shown to encode a molecular chaperone for Actin and Tubulin. TCP-1 found in mammalian cells and yeast plays an important role in the folding of cytosolic proteins.

CHROMOSOMAL LOCATION

Genetic locus: CCT2 (human) mapping to 12q15; Cct2 (mouse) mapping to 10 D2.

SOURCE

TCP-1 β (A-5) is a mouse monoclonal antibody specific for an epitope mapping between amino acids 509-534 at the C-terminus of TCP-1 β of human origin.

PRODUCT

Each vial contains 200 μ g IgG₁ kappa light chain in 1.0 ml of PBS with < 0.1% sodium azide and 0.1% gelatin.

Blocking peptide available for competition studies, sc-373769 P, (100 μ g peptide in 0.5 ml PBS containing < 0.1% sodium azide and 0.2% stabilizer protein).

RESEARCH USE

For research use only, not for use in diagnostic procedures.

APPLICATIONS

TCP-1 β (A-5) is recommended for detection of TCP-1 β of mouse, rat and human origin by Western Blotting (starting dilution 1:100, dilution range 1:100-1:1000), immunoprecipitation [1-2 μ g per 100-500 μ g of total protein (1 ml of cell lysate)], immunofluorescence (starting dilution 1:50, dilution range 1:50-1:500) and solid phase ELISA (starting dilution 1:30, dilution range 1:30-1:3000).

TCP-1 β (A-5) is also recommended for detection of TCP-1 β in additional species, including canine, bovine and porcine.

Suitable for use as control antibody for TCP-1 β siRNA (h): sc-36622, TCP-1 β siRNA (m): sc-36625, TCP-1 β shRNA Plasmid (h): sc-36622-SH, TCP-1 β shRNA Plasmid (m): sc-36625-SH, TCP-1 β shRNA (h) Lentiviral Particles: sc-36622-V and TCP-1 β shRNA (m) Lentiviral Particles: sc-36625-V.

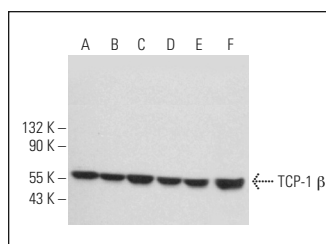
Molecular Weight of TCP-1 β : 50 kDa.

Positive Controls: HeLa whole cell lysate: sc-2200, ZR-75-1 cell lysate: sc-2241 or SK-BR-3 cell lysate: sc-2218.

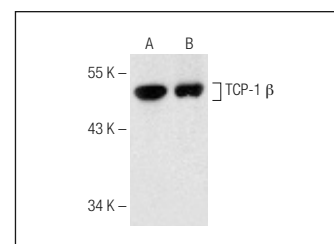
RECOMMENDED SUPPORT REAGENTS

To ensure optimal results, the following support reagents are recommended: 1) Western Blotting: use m-IgG κ BP-HRP: sc-516102 or m-IgG κ BP-HRP (Cruz Marker): sc-516102-CM (dilution range: 1:1000-1:10000), Cruz Marker™ Molecular Weight Standards: sc-2035, UltraCruz® Blocking Reagent: sc-516214 and Western Blotting Luminol Reagent: sc-2048. 2) Immunoprecipitation: use Protein A/G PLUS-Agarose: sc-2003 (0.5 ml agarose/2.0 ml). 3) Immunofluorescence: use m-IgG κ BP-FITC: sc-516140 or m-IgG κ BP-PE: sc-516141 (dilution range: 1:50-1:200) with UltraCruz® Mounting Medium: sc-24941 or UltraCruz® Hard-set Mounting Medium: sc-359850.

DATA



TCP-1 β (A-5): sc-373769. Western blot analysis of TCP-1 β expression in HeLa (A), HOS (B), SK-BR-3 (C), RAW 264.7 (D), WEHI-231 (E) and PC-12 (F) whole cell lysates.



TCP-1 β (A-5): sc-373769. Western blot analysis of TCP-1 β expression in 293T (A) and ZR-75-1 (B) whole cell lysates.

SELECT PRODUCT CITATIONS

- Samson, A.L., et al. 2016. Physicochemical properties that control protein aggregation also determine whether a protein is retained or released from necrotic cells. *Open Biol.* 6: 160098.
- Liu, Y., et al. 2019. CCT3 acts upstream of YAP and TFCP2 as a potential target and tumour biomarker in liver cancer. *Cell Death Dis.* 10: 644.

STORAGE

Store at 4° C, **DO NOT FREEZE**. Stable for one year from the date of shipment. Non-hazardous. No MSDS required.

PROTOCOLS

See our web site at www.scbt.com for detailed protocols and support products.