

Cytokeratin 8 (H-11): sc-374027

BACKGROUND

Cytokeratins comprise a diverse group of intermediate filament proteins (IFPs) that are expressed as pairs in both keratinized and non-keratinized epithelial tissue. Cytokeratins play a critical role in differentiation and tissue specialization and function to maintain the overall structural integrity of epithelial cells. They have been found to be useful markers of tissue differentiation, which is directly applicable to the characterization of malignant tumors. Cytokeratin 8 expression is seen in epithelium and epithelium-derived tumors. The Cytokeratin 8 and 18 pair are normally expressed in simple epithelia, but not in stratified epithelial cells. Research indicates that squamous cell carcinomas derived from stratified epithelia show abnormal expression of Cytokeratin 8 and 18, although it is not known whether these proteins contribute to the malignant phenotype of the cells. Expression of Cytokeratin 8 and 18 in oral squamous cell carcinomas is an independent prognostic marker that indicates a poor prognosis. Cytokeratin 8 expression correlates with malignancy in leukoplakia and carcinomas of the head and neck; it is expressed in all non-small-cell lung cancers. Cytokeratin 8 has been shown to possess extracellular epitopes on tumor cells, which may represent valuable targets for therapy.

CHROMOSOMAL LOCATION

Genetic locus: KRT8 (human) mapping to 12q13.13; Krt8 (mouse) mapping to 15 F3.

SOURCE

Cytokeratin 8 (H-11) is a mouse monoclonal antibody raised against amino acids 11-50 mapping near the N-terminus of Cytokeratin 8 of human origin.

PRODUCT

Each vial contains 200 µg IgG₁ kappa light chain in 1.0 ml of PBS with < 0.1% sodium azide and 0.1% gelatin.

APPLICATIONS

Cytokeratin 8 (H-11) is recommended for detection of Cytokeratin 8 of mouse, rat and human origin by Western Blotting (starting dilution 1:100, dilution range 1:100-1:1000), immunoprecipitation [1-2 µg per 100-500 µg of total protein (1 ml of cell lysate)], immunofluorescence (starting dilution 1:50, dilution range 1:50-1:500), immunohistochemistry (including paraffin-embedded sections) (starting dilution 1:50, dilution range 1:50-1:500) and solid phase ELISA (starting dilution 1:30, dilution range 1:30-1:3000).

Suitable for use as control antibody for Cytokeratin 8 siRNA (h): sc-35156, Cytokeratin 8 siRNA (m): sc-72111, Cytokeratin 8 shRNA Plasmid (h): sc-35156-SH, Cytokeratin 8 shRNA Plasmid (m): sc-72111-SH, Cytokeratin 8 shRNA (h) Lentiviral Particles: sc-35156-V and Cytokeratin 8 shRNA (m) Lentiviral Particles: sc-72111-V.

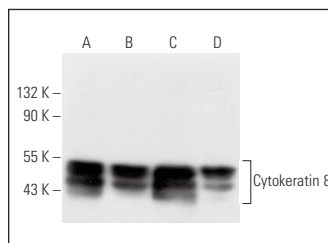
Molecular Weight of Cytokeratin 8: 40-55 kDa.

Positive Controls: MCF7 whole cell lysate: sc-2206, Hep G2 cell lysate: sc-2227 or T24 cell lysate: sc-2292.

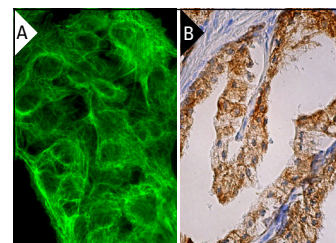
RECOMMENDED SUPPORT REAGENTS

To ensure optimal results, the following support reagents are recommended: 1) Western Blotting: use m-IgGκ BP-HRP: sc-516102 or m-IgGκ BP-HRP (Cruz Marker): sc-516102-CM (dilution range: 1:1000-1:10000), Cruz Marker™ Molecular Weight Standards: sc-2035, UltraCruz® Blocking Reagent: sc-516214 and Western Blotting Luminol Reagent: sc-2048. 2) Immunoprecipitation: use Protein A/G PLUS-Agarose: sc-2003 (0.5 ml agarose/2.0 ml). 3) Immunofluorescence: use m-IgGκ BP-FITC: sc-516140 or m-IgGκ BP-PE: sc-516141 (dilution range: 1:50-1:200) with UltraCruz® Mounting Medium: sc-24941 or UltraCruz® Hard-set Mounting Medium: sc-359850. 4) Immunohistochemistry: use m-IgGκ BP-HRP: sc-516102 with DAB, 50X: sc-24982 and Immunohistomount: sc-45086, or Organo/Limonene Mount: sc-45087.

DATA



Cytokeratin 8 (H-11): sc-374027. Western blot analysis of Cytokeratin 8 expression in SK-BR-3 (A), Hep G2 (B), MCF7 (C) and T24 (D) whole cell lysates.



Cytokeratin 8 (H-11): sc-374027. Immunofluorescence staining of formalin-fixed Hep G2 cells showing cytoskeletal localization (A). Immunoperoxidase staining of formalin fixed, paraffin-embedded human prostate tissue showing cytoplasmic staining of glandular cells (B).

SELECT PRODUCT CITATIONS

1. Gauck, D., et al. 2017. Hybrid clone cells derived from human breast epithelial cells and human breast cancer cells exhibit properties of cancer stem/initiating cells. BMC Cancer 17: 515.

STORAGE

Store at 4° C, **DO NOT FREEZE**. Stable for one year from the date of shipment. Non-hazardous. No MSDS required.

RESEARCH USE

For research use only, not for use in diagnostic procedures.

PROTOCOLS

See our web site at www.scbt.com for detailed protocols and support products.



See **Cytokeratin 8 (C51): sc-8020** for Cytokeratin 8 antibody conjugates, including AC, HRP, FITC, PE, and Alexa Fluor® 488, 546, 594, 647, 680 and 790.