

M-cadherin (C-6): sc-374093

BACKGROUND

Cadherins are a multigene family of Ca^{2+} -dependent cell adhesion molecules. They are transmembrane glycoproteins consisting of an extracellular domain, which mediates Ca^{2+} -dependent intercellular adhesion by homophilic interactions, a transmembrane region and a cytoplasmic domain. The extracellular domain is divided into a series of subdomains designated EC1-EC5. Homologies between different members of the cadherin family are most prominent in the cytoplasmic domain and in EC1 and EC2 and much less so in EC5 of the extracellular domain and in the transmembrane region. The binding properties and specificities of the adhesive function are located in the N-terminal part of the molecules. Four members of the cadherin family have been identified and molecularly cloned from mammalian cells. These include the neuronal (N), epithelial (E), placental (P) and muscle (M) cadherins. M-cadherin is not found in fibroblasts but is expressed at low level in myoblasts and is upregulated following induction of myotube formation, suggesting a specific function in skeletal muscle cell differentiation.

REFERENCES

1. Ringwald, M., et al. 1987. The structure of cell adhesion molecule uvomorulin: insights into the molecular mechanism of Ca^{2+} -dependent cell adhesion. *EMBO J.* 6: 3647-3653.
2. Nose, A., et al. 1987. Isolation of placental cadherin cDNA: identification of a novel gene family of cell-cell adhesion molecules. *EMBO J.* 6: 3655-3661.

CHROMOSOMAL LOCATION

Genetic locus: CDH15 (human) mapping to 16q24.3.

SOURCE

M-cadherin (C-6) is a mouse monoclonal antibody raised against amino acids 545-615 mapping near the C-terminus of M-cadherin of human origin.

PRODUCT

Each vial contains 200 μ g IgG₁ kappa light chain in 1.0 ml of PBS with < 0.1% sodium azide and 0.1% gelatin.

APPLICATIONS

M-cadherin (C-6) is recommended for detection of M-cadherin of human origin by Western Blotting (starting dilution 1:100, dilution range 1:100-1:1000), immunoprecipitation [1-2 μ g per 100-500 μ g of total protein (1 ml of cell lysate)], immunofluorescence (starting dilution 1:50, dilution range 1:50-1:500) and solid phase ELISA (starting dilution 1:30, dilution range 1:30-1:3000).

Suitable for use as control antibody for M-cadherin siRNA (h): sc-37041, M-cadherin shRNA Plasmid (h): sc-37041-SH and M-cadherin shRNA (h) Lentiviral Particles: sc-37041-V.

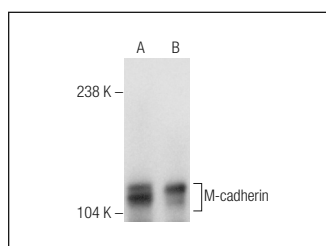
Molecular Weight of M-cadherin: 120 kDa.

Positive Controls: A-673 cell lysate: sc-2414, SJRH30 cell lysate: sc-2287 or M-cadherin (h): 293T Lysate: sc-159355.

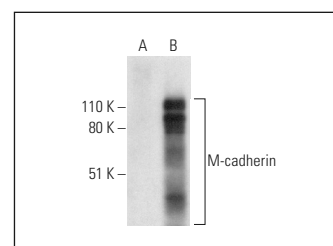
RECOMMENDED SUPPORT REAGENTS

To ensure optimal results, the following support reagents are recommended: 1) Western Blotting: use m-IgG κ BP-HRP: sc-516102 or m-IgG κ BP-HRP (Cruz Marker): sc-516102-CM (dilution range: 1:1000-1:10000), Cruz Marker™ Molecular Weight Standards: sc-2035, UltraCruz® Blocking Reagent: sc-516214 and Western Blotting Luminol Reagent: sc-2048. 2) Immunoprecipitation: use Protein A/G PLUS-Agarose: sc-2003 (0.5 ml agarose/2.0 ml). 3) Immunofluorescence: use m-IgG κ BP-FITC: sc-516140 or m-IgG κ BP-PE: sc-516141 (dilution range: 1:50-1:200) with UltraCruz® Mounting Medium: sc-24941 or UltraCruz® Hard-set Mounting Medium: sc-359850.

DATA



M-cadherin (C-6): sc-374093. Western blot analysis of M-cadherin expression in A-673 (A) and SJRH30 (B) whole cell lysates.



M-cadherin (C-6): sc-374093. Western blot analysis of M-cadherin expression in non-transfected: sc-117752 (A) and human M-cadherin transfected: sc-159355 (B) 293T whole cell lysates.

SELECT PRODUCT CITATIONS

1. Marti, M., et al. 2013. M-cadherin-mediated intercellular interactions activate satellite cell division. *J. Cell Sci.* 126: 5116-5131.

STORAGE


Store at 4° C, **DO NOT FREEZE**. Stable for one year from the date of shipment. Non-hazardous. No MSDS required.

RESEARCH USE

For research use only, not for use in diagnostic procedures.

PROTOCOLS

See our web site at www.scbt.com for detailed protocols and support products.



See **M-cadherin (C-8): sc-398107** for M-cadherin antibody conjugates, including AC, HRP, FITC, PE, and Alexa Fluor® 488, 546, 594, 647, 680 and 790.