

# ZDHC8 (B-3): sc-374191

## BACKGROUND

Zinc-finger proteins contain DNA-binding domains and have a wide variety of functions, most of which encompass some form of transcriptional activation or repression. ZDHC8 (zinc finger, DHHC-type containing 8), also known as KIAA1292, ZDHC1 or ZNF378 (zinc finger protein 378), is a 765 amino acid multi-pass membrane protein that localizes to the membrane of cytoplasmic vesicles and contains one DHHC-type zinc finger. Expressed as multiple alternatively spliced isoforms, ZDHC8 functions as a putative palmitoyltransferase that catalyzes the conversion of palmitoyl-CoA and a protein-cysteine to an S-palmitoyl protein and free CoA, a reaction that is important in glutamatergic transmission. Defects in the gene encoding ZDHC8 may be associated with an increased susceptibility to schizophrenia.

## REFERENCES

- Chen, W.Y., et al. 2004. Case-control study and transmission disequilibrium test provide consistent evidence for association between schizophrenia and genetic variation in the 22q11 gene ZDHC8. *Hum. Mol. Genet.* 13: 2991-2995.
- Mukai, J., et al. 2004. Evidence that the gene encoding ZDHC8 contributes to the risk of schizophrenia. *Nat. Genet.* 36: 725-731.

## CHROMOSOMAL LOCATION

Genetic locus: ZDHC8 (human) mapping to 22q11.21; Zdhc8 (mouse) mapping to 16 A3.

## SOURCE

ZDHC8 (B-3) is a mouse monoclonal antibody specific for an epitope mapping between amino acids 471-503 within an internal region of ZDHC8 of human origin.

## PRODUCT

Each vial contains 200 µg IgG<sub>1</sub> kappa light chain in 1.0 ml of PBS with < 0.1% sodium azide and 0.1% gelatin. Also available as TransCruz reagent for Gel Supershift and ChIP applications, sc-374191 X, 200 µg/0.1 ml.

ZDHC8 (B-3) is available conjugated to agarose (sc-374191 AC), 500 µg/0.25 ml agarose in 1 ml, for IP; to HRP (sc-374191 HRP), 200 µg/ml, for WB, IHC(P) and ELISA; to either phycoerythrin (sc-374191 PE), fluorescein (sc-374191 FITC), Alexa Fluor® 488 (sc-374191 AF488), Alexa Fluor® 546 (sc-374191 AF546), Alexa Fluor® 594 (sc-374191 AF594) or Alexa Fluor® 647 (sc-374191 AF647), 200 µg/ml, for WB (RGB), IF, IHC(P) and FCM; and to either Alexa Fluor® 680 (sc-374191 AF680) or Alexa Fluor® 790 (sc-374191 AF790), 200 µg/ml, for Near-Infrared (NIR) WB, IF and FCM.

Blocking peptide available for competition studies, sc-374191 P, (100 µg peptide in 0.5 ml PBS containing < 0.1% sodium azide and 0.2% stabilizer protein).

Alexa Fluor® is a trademark of Molecular Probes, Inc., Oregon, USA

## STORAGE

Store at 4° C, \*\*DO NOT FREEZE\*\*. Stable for one year from the date of shipment. Non-hazardous. No MSDS required.

## APPLICATIONS

ZDHC8 (B-3) is recommended for detection of ZDHC8 of mouse, rat and human origin by Western Blotting (starting dilution 1:100, dilution range 1:100-1:1000), immunoprecipitation [1-2 µg per 100-500 µg of total protein (1 ml of cell lysate)], immunofluorescence (starting dilution 1:50, dilution range 1:50-1:500) and solid phase ELISA (starting dilution 1:30, dilution range 1:30-1:3000).

ZDHC8 (B-3) is also recommended for detection of ZDHC8 in additional species, including porcine.

Suitable for use as control antibody for ZDHC8 siRNA (h): sc-76955, ZDHC8 siRNA (m): sc-155508, ZDHC8 shRNA Plasmid (h): sc-76955-SH, ZDHC8 shRNA Plasmid (m): sc-155508-SH, ZDHC8 shRNA (h) Lentiviral Particles: sc-76955-V and ZDHC8 shRNA (m) Lentiviral Particles: sc-155508-V.

ZDHC8 (B-3) X TransCruz antibody is recommended for Gel Supershift and ChIP applications.

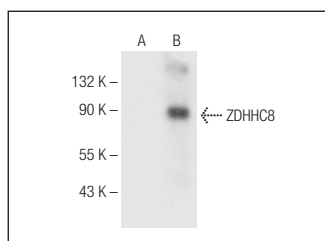
Molecular Weight of ZDHC8: 81 kDa.

Positive Controls: ZDHC8 (h): 293T Lysate: sc-116485 or KNRK whole cell lysate: sc-2214.

## RECOMMENDED SUPPORT REAGENTS

To ensure optimal results, the following support reagents are recommended: 1) Western Blotting: use m-IgGκ BP-HRP: sc-516102 or m-IgGκ BP-HRP (Cruz Marker): sc-516102-CM (dilution range: 1:1000-1:10000), Cruz Marker™ Molecular Weight Standards: sc-2035, UltraCruz® Blocking Reagent: sc-516214 and Western Blotting Luminol Reagent: sc-2048. 2) Immunoprecipitation: use Protein A/G PLUS-Agarose: sc-2003 (0.5 ml agarose/2.0 ml). 3) Immunofluorescence: use m-IgGκ BP-FITC: sc-516140 or m-IgGκ BP-PE: sc-516141 (dilution range: 1:50-1:200) with UltraCruz® Mounting Medium: sc-24941 or UltraCruz® Hard-set Mounting Medium: sc-359850.

## DATA



ZDHC8 (B-3): sc-374191. Western blot analysis of ZDHC8 expression in non-transfected: sc-117752 (A) and human ZDHC8 transfected: sc-116485 (B) 293T whole cell lysates.

## RESEARCH USE

For research use only, not for use in diagnostic procedures.