

GW182 (A-6): sc-374458

BACKGROUND

GW bodies (GWBs) function as storage centers and degradation sites for mRNAs. GWBs are crucial intracellular structures for miRNA function. Disassembly or disruption of GWBs has been shown to impair siRNA and miRNA silencing activity. GW182 is a cytoplasmic marker protein for GWBs. GW182 autoantigen, also designated EMSY interactor protein, plays a role in the maintenance and stability of the GWB structures. GW182 is an ubiquitously expressed protein that binds to mRNA. The GW182 protein may interact with endogenous argonaute-2 (Ago2), which is also enriched in GWBs. The GW182 protein is detected in patients with ataxia, Sjogren's syndrome (SS) and sensor neuropathy disease, who develop autoantibodies against GWB structure proteins.

REFERENCES

1. Eystathiou, T., et al. 2002. A phosphorylated cytoplasmic autoantigen, GW182, associates with a unique population of human mRNAs within novel cytoplasmic speckles. *Mol. Biol. Cell* 13: 1338-1351.
2. Eystathiou, T., et al. 2003. Clinical and serological associations of autoantibodies to GW bodies and a novel cytoplasmic autoantigen GW182. *J. Mol. Med.* 81: 811-818.
3. Eystathiou, T., et al. 2003. The GW182 protein colocalizes with mRNA degradation associated proteins hDcp1 and hLSm4 in cytoplasmic GW bodies. *RNA* 9: 1171-1173.

CHROMOSOMAL LOCATION

Genetic locus: TNRC6A (human) mapping to 16p12.1; Tnrc6a (mouse) mapping to 7 F3.

SOURCE

GW182 (A-6) is a mouse monoclonal antibody specific for an epitope mapping between amino acids 1555-1593 within an internal region of GW182 of human origin.

PRODUCT

Each vial contains 200 µg IgM kappa light chain in 1.0 ml of PBS with < 0.1% sodium azide and 0.1% gelatin.

GW182 (A-6) is available conjugated to agarose (sc-374458 AC), 500 µg/0.25 ml agarose in 1 ml, for IP; to HRP (sc-374458 HRP), 200 µg/ml, for WB, IHC(P) and ELISA; and to either phycoerythrin (sc-374458 PE), fluorescein (sc-374458 FITC), Alexa Fluor® 488 (sc-374458 AF488) or Alexa Fluor® 647 (sc-374458 AF647), 200 µg/ml, for IF, IHC(P) and FCM.

Blocking peptide available for competition studies, sc-374458 P, (100 µg peptide in 0.5 ml PBS containing < 0.1% sodium azide and 0.2% stabilizer protein).

Alexa Fluor® is a trademark of Molecular Probes, Inc., Oregon, USA

STORAGE

Store at 4° C, **DO NOT FREEZE**. Stable for one year from the date of shipment. Non-hazardous. No MSDS required.

APPLICATIONS

GW182 (A-6) is recommended for detection of GW182 isoforms 1, 2 and 3 of mouse, rat and human origin by Western Blotting (starting dilution 1:100, dilution range 1:100-1:1000), immunoprecipitation [1-2 µg per 100-500 µg of total protein (1 ml of cell lysate)], immunofluorescence (starting dilution 1:50, dilution range 1:50-1:500), immunohistochemistry (including paraffin-embedded sections) (starting dilution 1:50, dilution range 1:50-1:500) and solid phase ELISA (starting dilution 1:30, dilution range 1:30-1:3000).

GW182 (A-6) is also recommended for detection of GW182 in additional species, including canine, bovine and avian.

Suitable for use as control antibody for GW182 siRNA (h): sc-45516, GW182 siRNA (m): sc-45517, GW182 shRNA Plasmid (h): sc-45516-SH, GW182 shRNA Plasmid (m): sc-45517-SH, GW182 shRNA (h) Lentiviral Particles: sc-45516-V and GW182 shRNA (m) Lentiviral Particles: sc-45517-V.

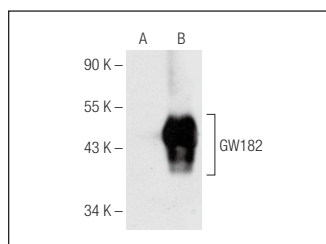
Molecular Weight of GW182: 182 kDa.

Positive Controls: GW182 (h): 293T Lysate: sc-113721.

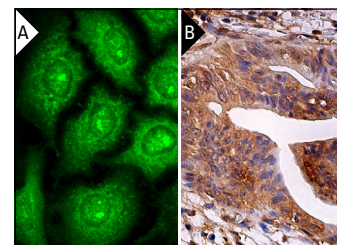
RECOMMENDED SUPPORT REAGENTS

To ensure optimal results, the following support reagents are recommended: 1) Western Blotting: use m-IgGκ BP-HRP: sc-516102 or m-IgGκ BP-HRP (Cruz Marker): sc-516102-CM (dilution range: 1:1000-1:10000), Cruz Marker™ Molecular Weight Standards: sc-2035, UltraCruz® Blocking Reagent: sc-516214 and Western Blotting Luminol Reagent: sc-2048. 2) Immunoprecipitation: use Protein L-Agarose: sc-2336 (0.5 ml agarose/2.0 ml). 3) Immunofluorescence: use m-IgGκ BP-FITC: sc-516140 or m-IgGκ BP-PE: sc-516141 (dilution range: 1:50-1:200) with UltraCruz® Mounting Medium: sc-24941 or UltraCruz® Hard-set Mounting Medium: sc-359850. 4) Immunohistochemistry: use m-IgGκ BP-HRP: sc-516102 with DAB, 50X: sc-24982 and Immunohisto-mount: sc-45086, or Organo/Limonene Mount: sc-45087.

DATA



GW182 (A-6): sc-374458. Western blot analysis of GW182 expression in non-transfected: sc-117752 (A) and human GW182 transfected: sc-113721 (B) 293T whole cell lysates.



GW182 (A-6): sc-374458. Immunofluorescence staining of methanol-fixed HeLa cells showing cytoplasmic and nuclear localization (A). Immunoperoxidase staining of formalin fixed, paraffin-embedded human gall bladder tissue showing cytoplasmic staining of glandular cells (B).

RESEARCH USE

For research use only, not for use in diagnostic procedures.