

Med30 (A-11): sc-374480

BACKGROUND

Med30 is a subunit of the RNA polymerase II (Pol II) transcriptional mediator complex. The mediator complex is a coactivator involved in the regulated transcription of Pol II-dependent genes. The mediator complex functions as a bridge to convey information from gene-specific regulatory proteins to the basal Pol II transcription machinery, and is recruited to promoter regions by directly interacting with regulatory proteins. The mediator complex also serves as a scaffold for the assembly of a functional pre-initiation complex with Pol II and other general transcription factors. Found in the nucleus, Med30 is expressed in brain, heart, kidney, liver, lung, pancreas, placenta and skeletal muscle.

REFERENCES

- Casamassimi, A., et al. 2007. Mediator complexes and eukaryotic transcription regulation: an overview. *Biochimie* 89: 1439-1446.
- Kim, B., et al. 2007. The transcription elongation factor TFIIIS is a component of RNA polymerase II preinitiation complexes. *Proc. Natl. Acad. Sci. USA* 104: 16068-16073.
- Bjornsdottir, G., et al. 2008. Minimal components of the RNA polymerase II transcription apparatus determine the consensus TATA box. *Nucleic Acids Res.* 36: 2906-2916.
- Bourbon, H.M. 2008. Comparative genomics supports a deep evolutionary origin for the large, four-module transcriptional mediator complex. *Nucleic Acids Res.* 36: 3993-4008.
- Tóth-Petróczy, A., et al. 2008. Malleable machines in transcription regulation: the mediator complex. *PLoS Comput. Biol.* 4: e1000243.
- Willis, I.M., et al. 2008. Genetic interactions of MAF1 identify a role for Med20 in transcriptional repression of ribosomal protein genes. *PLoS Genet.* 4: e1000112.
- Knesel, M.T., et al. 2009. The human CDK8 subcomplex is a histone kinase that requires Med12 for activity and can function independently of mediator. *Mol. Cell. Biol.* 29: 650-661.

CHROMOSOMAL LOCATION

Genetic locus: MED30 (human) mapping to 8q24.11; Med30 (mouse) mapping to 15 C.

SOURCE

Med30 (A-11) is a mouse monoclonal antibody specific for an epitope mapping between amino acids 119-155 within an internal region of Med30 of human origin.

PRODUCT

Each vial contains 200 µg IgM kappa light chain in 1.0 ml of PBS with < 0.1% sodium azide and 0.1% gelatin.

Blocking peptide available for competition studies, sc-374480 P, (100 µg peptide in 0.5 ml PBS containing < 0.1% sodium azide and 0.2% stabilizer protein).

APPLICATIONS

Med30 (A-11) is recommended for detection of Med30 of mouse, rat and human origin by Western Blotting (starting dilution 1:100, dilution range 1:100-1:1000), immunoprecipitation [1-2 µg per 100-500 µg of total protein (1 ml of cell lysate)], immunofluorescence (starting dilution 1:50, dilution range 1:50-1:500) and solid phase ELISA (starting dilution 1:30, dilution range 1:30-1:3000).

Med30 (A-11) is also recommended for detection of Med30 in additional species, including equine, canine, bovine and porcine.

Suitable for use as control antibody for Med30 siRNA (h): sc-77529, Med30 siRNA (m): sc-149355, Med30 shRNA Plasmid (h): sc-77529-SH, Med30 shRNA Plasmid (m): sc-149355-SH, Med30 shRNA (h) Lentiviral Particles: sc-77529-V and Med30 shRNA (m) Lentiviral Particles: sc-149355-V.

Molecular Weight (predicted) of Med30: 20 kDa.

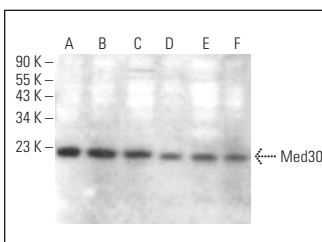
Molecular Weight (observed) of Med30: 24-30 kDa.

Positive Controls: Med30 (h): 293T Lysate: sc-174753, K-562 nuclear extract: sc-2130 or CCRF-CEM cell lysate: sc-2225.

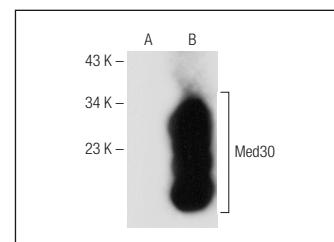
RECOMMENDED SUPPORT REAGENTS

To ensure optimal results, the following support reagents are recommended: 1) Western Blotting: use m-IgGκ BP-HRP: sc-516102 or m-IgGκ BP-HRP (Cruz Marker): sc-516102-CM (dilution range: 1:1000-1:10000), Cruz Marker™ Molecular Weight Standards: sc-2035, UltraCruz® Blocking Reagent: sc-516214 and Western Blotting Luminol Reagent: sc-2048. 2) Immunoprecipitation: use Protein L-Agarose: sc-2336 (0.5 ml agarose/2.0 ml). 3) Immunofluorescence: use m-IgGκ BP-FITC: sc-516140 or m-IgGκ BP-PE: sc-516141 (dilution range: 1:50-1:200) with UltraCruz® Mounting Medium: sc-24941 or UltraCruz® Hard-set Mounting Medium: sc-359850.

DATA



Med30 (A-11): sc-374480. Western blot analysis of Med30 expression in K-562 nuclear extract (A) and CCRF-CEM (B), PC-3 (C), EOC 20 (D), C6 (E) and A-10 (F) whole cell lysates.



Med30 (A-11): sc-374480. Western blot analysis of Med30 expression in non-transfected: sc-117752 (A) and human Med30 transfected: sc-174753 (B) 293T whole cell lysates.

STORAGE

Store at 4° C, **DO NOT FREEZE**. Stable for one year from the date of shipment. Non-hazardous. No MSDS required.

RESEARCH USE

For research use only, not for use in diagnostic procedures.