

ZNF226 (A-8): sc-374661

BACKGROUND

Zinc-finger proteins contain DNA-binding domains and have a wide variety of functions, most of which encompass some form of transcriptional activation or repression. The majority of zinc-finger proteins contain a Krüppel-type DNA binding domain and a KRAB domain, which is thought to interact with KAP1, thereby recruiting histone modifying proteins. ZNF266 (zinc finger protein 266) is a zinc finger protein belonging to the Krüppel C₂H₂-type zinc-finger protein family. Localizing to the nucleus, ZNF266 contains 19 C₂H₂-type zinc fingers and one KRAB domain. This suggests that ZNF226 may play a role in transcriptional regulation.

REFERENCES

1. Strausberg, R.L., Feingold, E.A., Grouse, L.H., Derge, J.G., Klausner, R.D., Collins, F.S., Wagner, L., Shenmen, C.M., Schuler, G.D., Altschul, S.F., Zeeberg, B., Buetow, K.H., et al. 2002. Generation and initial analysis of more than 15,000 full-length human and mouse cDNA sequences. *Proc. Natl. Acad. Sci. USA* 99: 16899-16903.
2. Shannon, M., Hamilton, A.T., Gordon, L., Branscomb, E. and Stubbs, L. 2003. Differential expansion of zinc-finger transcription factor loci in homologous human and mouse gene clusters. *Genome Res.* 13: 1097-1110.
3. Grimwood, J., Gordon, L.A., Olsen, A., Terry, A., Schmutz, J., Lamerdin, J., Hellsten, U., Goodstein, D., Couronne, O., Tran-Gyamfi, M., Aerts, A., Altherr, M., Ashworth, L., et al. 2004. The DNA sequence and biology of human chromosome 19. *Nature* 428: 529-535.

CHROMOSOMAL LOCATION

Genetic locus: ZNF226 (human) mapping to 19q13.31.

SOURCE

ZNF226 (A-8) is a mouse monoclonal antibody specific for an epitope mapping between amino acids 43-77 near the N-terminus of ZNF226 of human origin.

PRODUCT

Each vial contains 200 µg IgG_{2a} kappa light chain in 1.0 ml of PBS with < 0.1% sodium azide and 0.1% gelatin. Also available as TransCruz reagent for Gel Supershift and ChIP applications, sc-374661 X, 200 µg/0.1 ml.

ZNF226 (A-8) is available conjugated to agarose (sc-374661 AC), 500 µg/0.25 ml agarose in 1 ml, for IP; to HRP (sc-374661 HRP), 200 µg/ml, for WB, IHC(P) and ELISA; to either phycoerythrin (sc-374661 PE), fluorescein (sc-374661 FITC), Alexa Fluor® 488 (sc-374661 AF488), Alexa Fluor® 546 (sc-374661 AF546), Alexa Fluor® 594 (sc-374661 AF594) or Alexa Fluor® 647 (sc-374661 AF647), 200 µg/ml, for WB (RGB), IF, IHC(P) and FCM; and to either Alexa Fluor® 680 (sc-374661 AF680) or Alexa Fluor® 790 (sc-374661 AF790), 200 µg/ml, for Near-Infrared (NIR) WB, IF and FCM.

Blocking peptide available for competition studies, sc-374661 P, (100 µg peptide in 0.5 ml PBS containing < 0.1% sodium azide and 0.2% stabilizer protein).

Alexa Fluor® is a trademark of Molecular Probes, Inc., Oregon, USA

APPLICATIONS

ZNF226 (A-8) is recommended for detection of ZNF226 of human origin by Western Blotting (starting dilution 1:100, dilution range 1:100-1:1000), immunoprecipitation [1-2 µg per 100-500 µg of total protein (1 ml of cell lysate)], immunofluorescence (starting dilution 1:50, dilution range 1:50-1:500) and solid phase ELISA (starting dilution 1:30, dilution range 1:30-1:3000).

Suitable for use as control antibody for ZNF226 siRNA (h): sc-97235, ZNF226 shRNA Plasmid (h): sc-97235-SH and ZNF226 shRNA (h) Lentiviral Particles: sc-97235-V.

ZNF226 (A-8) X TransCruz antibody is recommended for Gel Supershift and ChIP applications.

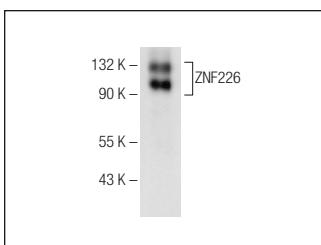
Molecular Weight of ZNF226: 92 kDa.

Positive Controls: SK-N-MC nuclear extract: sc-2154 or SK-N-MC cell lysate: sc-2237.

RECOMMENDED SUPPORT REAGENTS

To ensure optimal results, the following support reagents are recommended: 1) Western Blotting: use m-IgGκ BP-HRP: sc-516102 or m-IgGκ BP-HRP (Cruz Marker): sc-516102-CM (dilution range: 1:1000-1:10000), Cruz Marker™ Molecular Weight Standards: sc-2035, UltraCruz® Blocking Reagent: sc-516214 and Western Blotting Luminol Reagent: sc-2048. 2) Immunoprecipitation: use Protein A/G PLUS-Agarose: sc-2003 (0.5 ml agarose/2.0 ml). 3) Immunofluorescence: use m-IgGκ BP-FITC: sc-516140 or m-IgGκ BP-PE: sc-516141 (dilution range: 1:50-1:200) with UltraCruz® Mounting Medium: sc-24941 or UltraCruz® Hard-set Mounting Medium: sc-359850.

DATA



ZNF226 (A-8): sc-374661. Western blot analysis of ZNF226 expression in SK-N-MC nuclear extract.

STORAGE

Store at 4° C, **DO NOT FREEZE**. Stable for one year from the date of shipment. Non-hazardous. No MSDS required.

RESEARCH USE

For research use only, not for use in diagnostic procedures.

PROTOCOLS

See our web site at www.scbt.com for detailed protocols and support products.