

ETEA (D-10): sc-376071

BACKGROUND

ETEA, also designated UBX domain-containing protein 8 (UBXD8), is a 445-amino acid protein associated with atopic dermatitis (AD), a chronic noncontagious relapsing inflammatory skin disease characterized by eczematous skin lesions and also referred to as eczematous dermatitis. Other atopic diseases such as hay fever, asthma and conjunctivitis often occur along with AD. ETEA shows higher expression in T cells and eosinophils of patients with AD than in T cells and eosinophils of unaffected individuals. T cells are influential in the regulation of the inflammatory process of this disease. The persistence of AD is attributed to dysregulated apoptosis in T cells, eosinophils, and keratinocytes. ETEA may be involved in the resistance to apoptosis in T cells and eosinophils of AD patients.

REFERENCES

1. Leung, D.Y. 2000. Atopic dermatitis: new insights and opportunities for therapeutic intervention. *J. Allergy Clin. Immunol.* 105: 860-876.
2. Trautmann, A., Akdis, M., Kleemann, D., Altnauer, F., Simon, H.U., Graeve, T., Noll, M., Bröcker, E.B., Blaser, K. and Akdis, C.A. 2000. T cell-mediated FAS-induced keratinocyte apoptosis plays a key pathogenetic role in eczematous dermatitis. *J. Clin. Invest.* 106: 25-35.
3. Trautmann, A., Akdis, M., Blaser, K. and Akdis, C.A. 2000. Role of dysregulated apoptosis in atopic dermatitis. *Apoptosis* 5: 425-429.
4. Trautmann, A., Akdis, M., Klunker, S., Blaser, K. and Akdis, C.A. 2001. Role of apoptosis in atopic dermatitis. *Int. Arch. Allergy Immunol.* 124: 230-232.
5. Imai, Y., Nakada, A., Hashida, R., Sugita, Y., Tanaka, T., Tsujimoto, G., Matsumoto, K., Akasawa, A., Saito, H. and Oshida, T. 2002. Cloning and characterization of the highly expressed ETEA gene from blood cells of atopic dermatitis patients. *Biochem. Biophys. Res. Commun.* 297: 1282-1290.
6. García Angeles, J., Flores Sandoval, G., Orea Solano, M., Serrano, E. and Estrada Parra, S. 2003. Lymphocyte apoptosis in atopic dermatitis treated with transfer factor. *Rev. Alerg. Mex.* 50: 3-7.

CHROMOSOMAL LOCATION

Genetic locus: FAF2 (human) mapping to 5q35.2; Faf2 (mouse) mapping to 13 B1.

SOURCE

ETEA (D-10) is a mouse monoclonal antibody raised against amino acids 147-434 mapping at the C-terminus of ETEA of human origin.

PRODUCT

Each vial contains 200 µg IgM kappa light chain in 1.0 ml of PBS with < 0.1% sodium azide and 0.1% gelatin.

STORAGE

Store at 4° C, ****DO NOT FREEZE****. Stable for one year from the date of shipment. Non-hazardous. No MSDS required.

APPLICATIONS

ETEA (D-10) is recommended for detection of ETEA of mouse, rat and human origin by Western Blotting (starting dilution 1:100, dilution range 1:100-1:1000), immunoprecipitation [1-2 µg per 100-500 µg of total protein (1 ml of cell lysate)], immunofluorescence (starting dilution 1:50, dilution range 1:50-1:500), immunohistochemistry (including paraffin-embedded sections) (starting dilution 1:50, dilution range 1:50-1:500) and solid phase ELISA (starting dilution 1:30, dilution range 1:30-1:3000).

Suitable for use as control antibody for ETEA siRNA (h): sc-60607, ETEA siRNA (m): sc-60608, ETEA shRNA Plasmid (h): sc-60607-SH, ETEA shRNA Plasmid (m): sc-60608-SH, ETEA shRNA (h) Lentiviral Particles: sc-60607-V and ETEA shRNA (m) Lentiviral Particles: sc-60608-V.

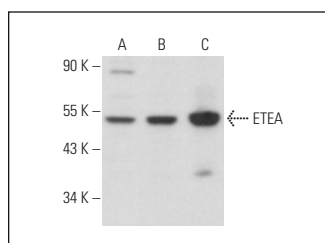
Molecular Weight of ETEA: 53 kDa.

Positive Controls: Jurkat whole cell lysate: sc-2204, HeLa whole cell lysate: sc-2200 or 3T3-L1 cell lysate: sc-2243.

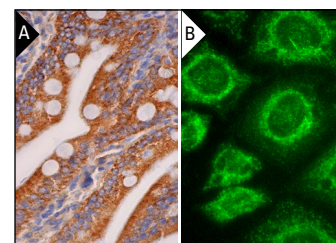
RECOMMENDED SUPPORT REAGENTS

To ensure optimal results, the following support reagents are recommended: 1) Western Blotting: use m-IgGκ BP-HRP: sc-516102 or m-IgGκ BP-HRP (Cruz Marker): sc-516102-CM (dilution range: 1:1000-1:10000), Cruz Marker™ Molecular Weight Standards: sc-2035, UltraCruz® Blocking Reagent: sc-516214 and Western Blotting Luminol Reagent: sc-2048. 2) Immunoprecipitation: use Protein L-Agarose: sc-2336 (0.5 ml agarose/2.0 ml). 3) Immunofluorescence: use m-IgGκ BP-FITC: sc-516140 or m-IgGκ BP-PE: sc-516141 (dilution range: 1:50-1:200) with UltraCruz® Mounting Medium: sc-24941 or UltraCruz® Hard-set Mounting Medium: sc-359850. 4) Immunohistochemistry: use m-IgGκ BP-HRP: sc-516102 with DAB, 50X: sc-24982 and Immunohisto-mount: sc-45086, or Organo/Limonene Mount: sc-45087.

DATA



ETEA (D-10): sc-376071. Western blot analysis of ETEA expression in Jurkat (A), HeLa (B) and 3T3-L1 (C) whole cell lysates.



ETEA (D-10): sc-376071. Immunoperoxidase staining of formalin fixed, paraffin-embedded human duodenum tissue showing cytoplasmic staining of glandular cells (A). Immunofluorescence staining of methanol-fixed HeLa cells showing cytoplasmic localization (B).

RESEARCH USE

For research use only, not for use in diagnostic procedures.

PROTOCOLS

See our web site at www.scbt.com for detailed protocols and support products.