

ACE (H-9): sc-376132

BACKGROUND

Angiotensin-converting enzyme (ACE) is a carboxy-terminal dipeptidyl exopeptidase that converts Angiotensin I to the potent vasopressor hormone, Angiotensin II. There are two isoforms of ACE, the pulmonary ACEP and the testicular ACET. ACEP is a glycoprotein expressed in vascular endothelial cells of the lung, liver, adrenal cortex, pancreas, kidney and spleen. The ACET isoform is expressed exclusively in adult testis by developing sperm cells, specifically, late pachytene spermatocytes. Additionally, ACE inactivates bradykinin, a vasodepressor peptide, and is involved in fluid/electrolyte homeostasis. Although it bears significant sequence homology to ACE, ACE2 shows a more restricted pattern of expression. ACE is expressed ubiquitously throughout the vasculature while ACE2 is expressed only in cardiac, renal and testicular cells.

REFERENCES

1. Erdos, E.G., et al. 1967. An enzyme in microsomal fraction of kidney that inactivates bradykinin. *Life Sci.* 6: 569-754.
2. Soffer, R.L. 1976. Angiotensin-converting enzyme and the regulation of vasoactive peptides. *Annu. Rev. Biochem.* 45: 73-94.

CHROMOSOMAL LOCATION

Genetic locus: ACE (human) mapping to 17q23.3; Ace (mouse) mapping to 11 E1.

SOURCE

ACE (H-9) is a mouse monoclonal antibody specific for an epitope mapping between amino acids 1279-1306 at the C-terminus of ACE of human origin.

PRODUCT

Each vial contains 200 µg IgA kappa light chain in 1.0 ml of PBS with < 0.1% sodium azide and 0.1% gelatin.

Blocking peptide available for competition studies, sc-376132 P, (100 µg peptide in 0.5 ml PBS containing < 0.1% sodium azide and 0.2% stabilizer protein).

APPLICATIONS

ACE (H-9) is recommended for detection of ACE somatic and testis isoforms of mouse, rat and human origin by Western Blotting (starting dilution 1:200, dilution range 1:100-1:1000), immunoprecipitation [1-2 µg per 100-500 µg of total protein (1 ml of cell lysate)], immunofluorescence (starting dilution 1:50, dilution range 1:50-1:500) and solid phase ELISA (starting dilution 1:30, dilution range 1:30-1:3000).

Suitable for use as control antibody for ACE siRNA (h): sc-29626, ACE siRNA (m): sc-29627, ACE shRNA Plasmid (h): sc-29626-SH, ACE shRNA Plasmid (m): sc-29627-SH, ACE shRNA (h) Lentiviral Particles: sc-29626-V and ACE shRNA (m) Lentiviral Particles: sc-29627-V.

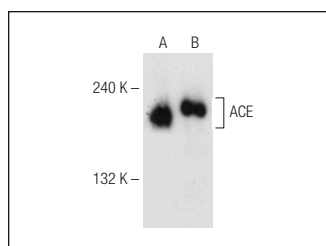
Molecular Weight of ACE: 195 kDa.

Positive Controls: mouse kidney extract: sc-2255, human kidney extract: sc-363764 or IB4 whole cell lysate: sc-364780.

RECOMMENDED SUPPORT REAGENTS

To ensure optimal results, the following support reagents are recommended: 1) Western Blotting: use m-IgGκ BP-HRP: sc-516102 or m-IgGκ BP-HRP (Cruz Marker): sc-516102-CM (dilution range: 1:1000-1:10000), Cruz Marker™ Molecular Weight Standards: sc-2035, UltraCruz® Blocking Reagent: sc-516214 and Western Blotting Luminol Reagent: sc-2048. 2) Immunoprecipitation: use Protein L-Agarose: sc-2336 (0.5 ml agarose/2.0 ml). 3) Immunofluorescence: use m-IgGκ BP-FITC: sc-516140 or m-IgGκ BP-PE: sc-516141 (dilution range: 1:50-1:200) with UltraCruz® Mounting Medium: sc-24941 or UltraCruz® Hard-set Mounting Medium: sc-359850.

DATA



ACE (H-9): sc-376132. Western blot analysis of ACE expression in mouse kidney (A) and human kidney (B) tissue extracts.

SELECT PRODUCT CITATIONS

1. Jiang, T., et al. 2013. Angiotensin-(1-7) modulates renin-angiotensin system associated with reducing oxidative stress and attenuating neuronal apoptosis in the brain of hypertensive rats. *Pharmacol. Res.* 67: 84-93.
2. Macedo, L.M., et al. 2021. Effect of Angiotensin II and angiotensin-(1-7) on proliferation of stem cells from human dental apical papilla. *J. Cell. Physiol.* 236: 366-378.
3. Dutra, J.B.R., et al. 2022. p-aminobenzamidine attenuates cardiovascular dysfunctions in spontaneously hypertensive rats. *Life Sci.* 304: 120693.

STORAGE

Store at 4° C, **DO NOT FREEZE**. Stable for one year from the date of shipment. Non-hazardous. No MSDS required.

RESEARCH USE

For research use only, not for use in diagnostic procedures.

PROTOCOLS

See our web site at www.scbt.com for detailed protocols and support products.



See **ACE (2E2): sc-23908** for ACE antibody conjugates, including AC, HRP, FITC, PE, and Alexa Fluor® 488, 546, 594, 647, 680 and 790.