

SCML2 (H-4): sc-376289

BACKGROUND

In *Drosophila*, the Polycomb (PcG) gene family encodes chromatin proteins that are required for the repression of homeotic loci in embryonic development. PcG proteins work in conjunction with the trithorax-group (trxG), which activate homeobox gene expression during embryonic development. SCM (sex comb on midleg) is an important *Drosophila* PcG protein involved in transcriptional repression. SCML2 (sex comb on midleg-like 2) is a human homolog of this *Drosophila* protein. SCML2 is a ubiquitously expressed protein with predominant expression in placenta, testis and thymus. Upon DNA damage, SCML2 may be phosphorylated by ATR or ATM. Due to alternative splicing, two isoforms exist for this protein.

REFERENCES

1. Montini, E., et al. 1999. Identification of SCML2, a second human gene homologous to the *Drosophila* sex comb on midleg (Scm): a new gene cluster on Xp22.13. *Genomics* 58: 65-72.
2. Tomotsune, D., et al. 1999. A novel member of murine Polycomb-group proteins, Sex comb on midleg homolog protein, is highly conserved, and interacts with RAE28/mph1 *in vitro*. *Differentiation* 65: 229-239.
3. Toutain, A., et al. 2002. Refinement of the NHS locus on chromosome Xp22.13 and analysis of five candidate genes. *Eur. J. Hum. Genet.* 10: 516-520.
4. Sathyamurthy, A., et al. 2003. Crystal structure of the malignant brain tumor (MBT) repeats in Sex Comb on Midleg-like 2 (SCML2). *J. Biol. Chem.* 278: 46968-46973.
5. Peterson, A.J., et al. 2004. Requirement for sex comb on midleg protein interactions in *Drosophila* Polycomb group repression. *Genetics* 167: 1225-1239.
6. Kim, C.A., et al. 2005. Structural organization of a Sex-Comb-on-midleg/polyhomeotic copolymer. *J. Biol. Chem.* 280: 27769-27775.

CHROMOSOMAL LOCATION

Genetic locus: SCML2 (human) mapping to Xp22.13; Scml2 (mouse) mapping to X F4.

SOURCE

SCML2 (H-4) is a mouse monoclonal antibody raised against amino acids 561-825 mapping at the C-terminus of SCML2 of mouse origin.

PRODUCT

Each vial contains 200 µg IgG₁ kappa light chain in 1.0 ml of PBS with < 0.1% sodium azide and 0.1% gelatin.

STORAGE

Store at 4° C, **DO NOT FREEZE**. Stable for one year from the date of shipment. Non-hazardous. No MSDS required.

RESEARCH USE

For research use only, not for use in diagnostic procedures.

APPLICATIONS

SCML2 (H-4) is recommended for detection of SCML2 of mouse, rat and human origin by Western Blotting (starting dilution 1:100, dilution range 1:100-1:1000), immunoprecipitation [1-2 µg per 100-500 µg of total protein (1 ml of cell lysate)], immunofluorescence (starting dilution 1:50, dilution range 1:50-1:500), immunohistochemistry (including paraffin-embedded sections) (starting dilution 1:50, dilution range 1:50-1:500) and solid phase ELISA (starting dilution 1:30, dilution range 1:30-1:3000).

Suitable for use as control antibody for SCML2 siRNA (h): sc-90912, SCML2 siRNA (m): sc-153261, SCML2 shRNA Plasmid (h): sc-90912-SH, SCML2 shRNA Plasmid (m): sc-153261-SH, SCML2 shRNA (h) Lentiviral Particles: sc-90912-V and SCML2 shRNA (m) Lentiviral Particles: sc-153261-V.

Molecular Weight of human SCML2: 77 kDa.

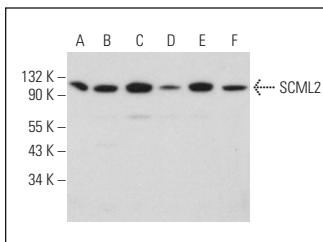
Molecular Weight of mouse SCML2: 93 kDa.

Positive Controls: F9 cell lysate: sc-2245, HEL 92.1.7 cell lysate: sc-2270 or 3T3-L1 cell lysate: sc-2243.

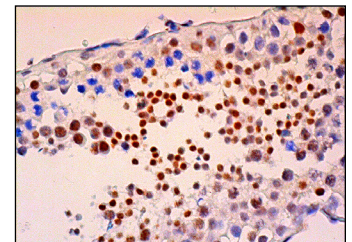
RECOMMENDED SUPPORT REAGENTS

To ensure optimal results, the following support reagents are recommended: 1) Western Blotting: use m-IgGκ BP-HRP: sc-516102 or m-IgGκ BP-HRP (Cruz Marker): sc-516102-CM (dilution range: 1:1000-1:10000), Cruz Marker™ Molecular Weight Standards: sc-2035, UltraCruz® Blocking Reagent: sc-516214 and Western Blotting Luminol Reagent: sc-2048. 2) Immunoprecipitation: use Protein A/G PLUS-Agarose: sc-2003 (0.5 ml agarose/2.0 ml). 3) Immunofluorescence: use m-IgGκ BP-FITC: sc-516140 or m-IgGκ BP-PE: sc-516141 (dilution range: 1:50-1:200) with UltraCruz® Mounting Medium: sc-24941 or UltraCruz® Hard-set Mounting Medium: sc-359850. 4) Immunohistochemistry: use m-IgGκ BP-HRP: sc-516102 with DAB, 50X: sc-24982 and Immunohistomount: sc-45086, or Organo/Limonene Mount: sc-45087.

DATA



SCML2 (H-4): sc-376289. Western blot analysis of SCML2 expression in F9 (A), 3T3-L1 (B), HEL 92.1.7 (C), Caki-1 (D), HEK293 (E) and PC-12 (F) whole cell lysates.



SCML2 (H-4): sc-376289. Immunoperoxidase staining of formalin fixed, paraffin-embedded human testis tissue showing nuclear staining of cells in seminiferous ducts.

PROTOCOLS

See our web site at www.scbt.com for detailed protocols and support products.