

# chicken anti-rat IgG-PE: sc-3763

## BACKGROUND

Santa Cruz Biotechnology's secondary antibodies are available conjugated to either an enzyme, biotin or fluorophore for use in a variety of antibody-based applications including Western Blot, immunostaining, flow cytometry and ELISA. Secondary antibodies are commonly affinity purified against immobilized whole IgG or against antibody fragments. Santa Cruz Biotechnology offers an extensive selection of secondary antibodies optimized for immunohistochemistry and flow cytometry, and are labeled with either biotin, FITC (fluorescein isothiocyanate), Texas Red®, TRITC (tetramethyl rhodamine iso-thiocyanate), PE (phycoerythrin), PerCP (peridinin chlorophyll protein complex) and PerCP-Cy5.5 (peridinin chlorophyll protein complex with cyanin-5.5). Immunohistochemistry and flow cytometry secondary antibodies are specific for commonly used primary antibody species, including goat, rabbit, mouse and rat.

## SOURCE

chicken anti-rat IgG-PE is a pre-adsorbed, affinity purified secondary antibody raised in chicken against rat IgG and conjugated to PE (phycoerythrin).

## PRODUCT

Each vial contains 200 µg chicken IgG (pre-adsorbed with mouse and human IgG) in 0.5 ml of PBS containing 0.1% gelatin and 0.1% sodium azide.

## APPLICATIONS

chicken anti-rat IgG-PE is recommended for detection of rat IgG by immunofluorescence staining (starting dilution: 1:100, dilution range: 1:100-1:400), immunohistochemical staining (starting dilution: 1:100, dilution range: 1:100-1:400) and flow cytometry (0.5-1 µg per 1 x 10<sup>6</sup> cells).

## RECOMMENDED SUPPORT PRODUCTS

### A. TISSUE CULTURE CELLS

- CrystalCruz™ Cover Glasses, 22 x 50 mm, precleaned: sc-24975
- CrystalCruz™ Micro Slides 75 x 25 mm; 72 frosted sides: sc-24976
- PBS (Phosphate Buffered Saline), powder, 1 packet: sc-24947
- Formaldehyde, 37% formaldehyde solution, 25 ml: sc-203049
- Hydrogen Peroxide, 30% solution, 100 ml: sc-203336

### B. FROZEN TISSUE SECTIONS

- Organo/Limonene Mount, non-toxic alternative to Permount, 100 ml: sc-45087
- UltraCruz™ Mounting Medium, aqueous-based, 10 ml: sc-24941
- ImmunoHistoMount, aqueous-based mounting medium, 30 ml: sc-45086
- Immuno In Situ Mount, for use with in situ hybridization, 30 ml: sc-45088

### C. FORMALIN-FIXED, PARAFFIN-EMBEDDED TISSUE SECTIONS

- Paraffin, for the preparation of tissue samples for staining, 500 g: sc-286633
- Xylenes, mixed isomers with ethylbenzene, 500 ml: sc-237422
- Hematoxylin, Gill's Formulation #2; nuclear counter stain, 100 ml: sc-24973

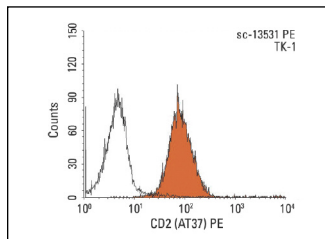
## RESEARCH USE

For research use only, not for use in diagnostic procedures.

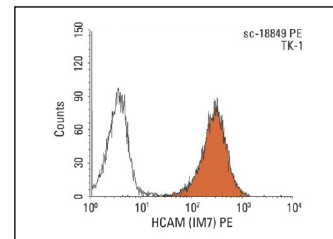
## STORAGE

Store at 4° C, **\*\*DO NOT FREEZE\*\***. Stable for one year from the date of shipment. Non-hazardous. No MSDS required.

## DATA



chicken anti-rat IgG-PE: sc-3763. Indirect FCM analysis of TK-1 cells stained with CD2 (AT37), followed by PE-conjugated chicken anti-rat IgG: sc-3763. Black line histogram represents the isotype control, normal rat IgG<sub>2a</sub>: sc-3883. Antibody tested: CD2 (AT37): sc-13531.



chicken anti-rat IgG-PE: sc-3763. Indirect FCM analysis of TK-1 cells stained with HCAM (IM7), followed by PE-conjugated chicken anti-rat IgG: sc-3763. Black line histogram represents the isotype control, normal rat IgG<sub>2b</sub>: sc-3884. Antibody tested: HCAM (IM7): sc-18849.

## PROTOCOLS

See our web site at [www.scbt.com](http://www.scbt.com) or our catalog for detailed protocols and support products.

Texas Red® is a registered trademark of Molecular Probes (6/02).