

# PDI (C-5): sc-376369

## BACKGROUND

Oxidoreductase-protein disulfide isomerase (PDI) is a homodimer consisting of subunits that catalyzes thiol-disulfide exchange, mediates folding of newly synthesized proteins and functions as a molecular chaperone. PDI localizes to the lumen of the endoplasmic reticulum (ER), where in conjunction with folding-helper proteins, such as immunoglobulin heavy chain binding protein (BiP), mediates tertiary and quaternary protein-processing. Cell surface PDI induces sulfhydryl-mediated conformational changes in integrin-mediated adhesion receptor-ligand interactions, thereby regulating integrin responses and cell adhesion. Additionally, PDI functions as a subunit of two more complex enzyme systems: the prolyl-4-hydroxylase and the triacylglycerol transfer proteins.

## CHROMOSOMAL LOCATION

Genetic locus: P4HB (human) mapping to 17q25.3; P4hb (mouse) mapping to 11 E2.

## SOURCE

PDI (C-5) is a mouse monoclonal antibody specific for an epitope mapping between amino acids 97-135 near the N-terminus of PDI of human origin.

## PRODUCT

Each vial contains 200 µg IgG<sub>1</sub> kappa light chain in 1.0 ml of PBS with < 0.1% sodium azide and 0.1% gelatin.

Blocking peptide available for competition studies, sc-376369 P, (100 µg peptide in 0.5 ml PBS containing < 0.1% sodium azide and 0.2% stabilizer protein).

## STORAGE

Store at 4° C, \*\*DO NOT FREEZE\*\*. Stable for one year from the date of shipment. Non-hazardous. No MSDS required.

## APPLICATIONS

PDI (C-5) is recommended for detection of precursor and mature PDI of mouse, rat and human origin by Western Blotting (starting dilution 1:100, dilution range 1:100-1:1000), immunoprecipitation [1-2 µg per 100-500 µg of total protein (1 ml of cell lysate)], immunofluorescence (starting dilution 1:50, dilution range 1:50-1:500), immunohistochemistry (including paraffin-embedded sections) (starting dilution 1:50, dilution range 1:50-1:500) and solid phase ELISA (starting dilution 1:30, dilution range 1:30-1:3000).

Suitable for use as control antibody for PDI siRNA (h): sc-36201, PDI siRNA (m): sc-36202, PDI shRNA Plasmid (h): sc-36201-SH, PDI shRNA Plasmid (m): sc-36202-SH, PDI shRNA (h) Lentiviral Particles: sc-36201-V and PDI shRNA (m) Lentiviral Particles: sc-36202.

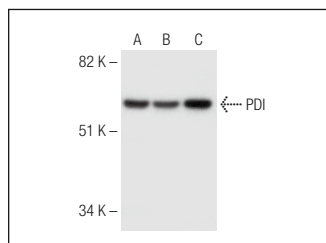
Molecular Weight of PDI: 55 kDa.

Positive Controls: MOLT-4 cell lysate: sc-2233, Raji whole cell lysate: sc-364236 or A2058 whole cell lysate: sc-364178.

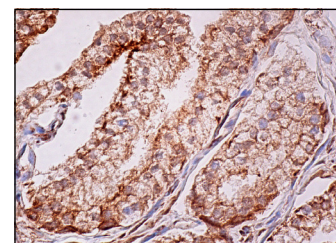
## RECOMMENDED SUPPORT REAGENTS

To ensure optimal results, the following support reagents are recommended: 1) Western Blotting: use m-IgGκ BP-HRP: sc-516102 or m-IgGκ BP-HRP (Cruz Marker): sc-516102-CM (dilution range: 1:1000-1:10000), Cruz Marker™ Molecular Weight Standards: sc-2035, UltraCruz® Blocking Reagent: sc-516214 and Western Blotting Luminol Reagent: sc-2048. 2) Immunoprecipitation: use Protein A/G PLUS-Agarose: sc-2003 (0.5 ml agarose/2.0 ml). 3) Immunofluorescence: use m-IgGκ BP-FITC: sc-516140 or m-IgGκ BP-PE: sc-516141 (dilution range: 1:50-1:200) with UltraCruz® Mounting Medium: sc-24941 or UltraCruz® Hard-set Mounting Medium: sc-359850. 4) Immunohistochemistry: use m-IgGκ BP-HRP: sc-516102 with DAB, 50X: sc-24982 and Immunohistomount: sc-45086, or Organo/Limonene Mount: sc-45087.

## DATA



PDI (C-5): sc-376369. Western blot analysis of PDI expression in MOLT-4 (A), Raji (B) and A2058 (C) whole cell lysates.



PDI (C-5): sc-376369. Immunoperoxidase staining of formalin fixed, paraffin-embedded human prostate tissue showing cytoplasmic staining of glandular cells.

## SELECT PRODUCT CITATIONS

- Gómez, D., et al. 2016. PPAR $\gamma$  agonists as an anti-inflammatory treatment inhibiting rotavirus infection of small intestinal villi. PPAR Res. 2016: 4049373.
- Sossa-Rojas, H., et al. 2023. Preclinical evaluation of oncolytic potential human rotavirus Wt 1-5 in gastric adenocarcinoma. PLoS ONE 18: e0285543.

## RESEARCH USE

For research use only, not for use in diagnostic procedures.

## PROTOCOLS

See our web site at [www.scbt.com](http://www.scbt.com) for detailed protocols and support products.

## CONJUGATES

See **PDI (C-2): sc-74551** for PDI antibody conjugates, including AC, HRP, FITC, PE, and Alexa Fluor® 488, 546, 594, 647, 680 and 790.