

prefoldin 6 (F-11): sc-376733

BACKGROUND

Molecular chaperones are proteins that assist in the correct folding of other proteins in the crowded molecular environment that exists in living cells. Within this class of proteins, a key role is played by chaperonins, multisubunit toroidal (i.e. doughnut-shaped) assemblies that undergo major ATP-dependent conformational changes as part of the mechanism of facilitated folding. Prefoldin is a heterohexameric chaperone protein which has the ability to capture unfolded Actin. Six prefoldin polypeptides, prefoldin 1-6, have been identified. Prefoldin 1 is a 122 amino acid protein that binds specifically to cytosolic chaperonin (c-cpn) and transfers target proteins to it. Prefoldin 3 (VBP1 or VHL binding protein-1) forms complexes with VHL and is translocated from perinuclear granules to the nucleus or cytoplasm. Prefoldin 4 is a possible transcription factor. Prefoldin 5 (c-Myc-binding protein Mm-1, Myc modulator 1 or MM-1) is a c-Myc binding protein.

REFERENCES

1. Tsuchiya, H., Iseda, T. and Hino, O. 1996. Identification of a novel protein (VBP-1) binding to the von Hippel-Lindau (VHL) tumor suppressor gene product. *Cancer Res.* 56: 2881-2885.
2. Brinke, A., Green, P.M. and Giannelli, F. 1997. Characterization of the gene (VBP1) and transcript for the von Hippel-Lindau binding protein and isolation of the highly conserved murine homologue. *Genomics* 45: 105-112.
3. Vainberg, I.E., Lewis, S.A., Rommelaere, H., Ampe, C., Vandekerckhove, J., Klein, H.L. and Cowan, N.J. 1998. Prefoldin, a chaperone that delivers unfolded proteins to cytosolic chaperonin. *Cell* 93: 863-873.
4. LocusLink Report (LocusID: 604897). <http://www.ncbi.nlm.nih.gov/LocusLink/>

CHROMOSOMAL LOCATION

Genetic locus: PFDN6 (human) mapping to 6p21.32; Pfdn6 (mouse) mapping to 17 B1.

SOURCE

prefoldin 6 (F-11) is a mouse monoclonal antibody raised against amino acids 1-103 mapping at the N-terminus of prefoldin 6 of human origin.

PRODUCT

Each vial contains 200 µg IgG₁ kappa light chain in 1.0 ml of PBS with < 0.1% sodium azide and 0.1% gelatin.

prefoldin 6 (F-11) is available conjugated to agarose (sc-376733 AC), 500 µg/0.25 ml agarose in 1 ml, for IP; to HRP (sc-376733 HRP), 200 µg/ml, for WB, IHC(P) and ELISA; to either phycoerythrin (sc-376733 PE), fluorescein (sc-376733 FITC), Alexa Fluor[®] 488 (sc-376733 AF488), Alexa Fluor[®] 546 (sc-376733 AF546), Alexa Fluor[®] 594 (sc-376733 AF594) or Alexa Fluor[®] 647 (sc-376733 AF647), 200 µg/ml, for WB (RGB), IF, IHC(P) and FCM; and to either Alexa Fluor[®] 680 (sc-376733 AF680) or Alexa Fluor[®] 790 (sc-376733 AF790), 200 µg/ml, for Near-Infrared (NIR) WB, IF and FCM.

STORAGE

Store at 4° C, ****DO NOT FREEZE****. Stable for one year from the date of shipment. Non-hazardous. No MSDS required.

APPLICATIONS

prefoldin 6 (F-11) is recommended for detection of prefoldin 6 of mouse, rat and human origin by Western Blotting (starting dilution 1:100, dilution range 1:100-1:1000), immunoprecipitation [1-2 µg per 100-500 µg of total protein (1 ml of cell lysate)], immunofluorescence (starting dilution 1:50, dilution range 1:50-1:500) and solid phase ELISA (starting dilution 1:30, dilution range 1:30-1:3000).

prefoldin 6 (F-11) is also recommended for detection of prefoldin 6 in additional species, including equine, canine, bovine and porcine.

Suitable for use as control antibody for prefoldin 6 siRNA (h): sc-40878, prefoldin 6 siRNA (m): sc-40879, prefoldin 6 shRNA Plasmid (h): sc-40878-SH, prefoldin 6 shRNA Plasmid (m): sc-40879-SH, prefoldin 6 shRNA (h) Lentiviral Particles: sc-40878-V and prefoldin 6 shRNA (m) Lentiviral Particles: sc-40879-V.

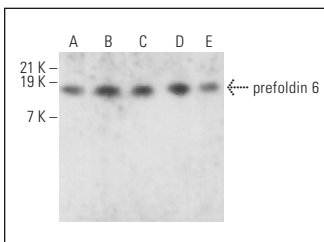
Molecular Weight of prefoldin 6: 13 kDa.

Positive Controls: K-562 whole cell lysate: sc-2203, CCRF-CEM cell lysate: sc-2225 or TF-1 cell lysate: sc-2412.

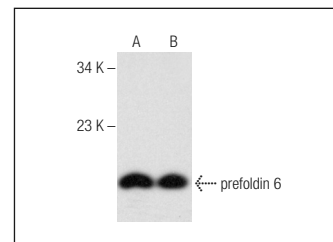
RECOMMENDED SUPPORT REAGENTS

To ensure optimal results, the following support reagents are recommended: 1) Western Blotting: use m-IgGκ BP-HRP: sc-516102 or m-IgGκ BP-HRP (Cruz Marker): sc-516102-CM (dilution range: 1:1000-1:10000), Cruz Marker[™] Molecular Weight Standards: sc-2035, UltraCruz[®] Blocking Reagent: sc-516214 and Western Blotting Luminol Reagent: sc-2048. 2) Immunoprecipitation: use Protein A/G PLUS-Agarose: sc-2003 (0.5 ml agarose/2.0 ml). 3) Immunofluorescence: use m-IgGκ BP-FITC: sc-516140 or m-IgGκ BP-PE: sc-516141 (dilution range: 1:50-1:200) with UltraCruz[®] Mounting Medium: sc-24941 or UltraCruz[®] Hard-set Mounting Medium: sc-359850.

DATA



prefoldin 6 (F-11): sc-376733. Western blot analysis of prefoldin 6 expression in K-562 (A), SK-N-SH (B), HEL 92.1.7 (C), SJRH30 (D) and TF-1 (E) whole cell lysates.



prefoldin 6 (F-11): sc-376733. Western blot analysis of prefoldin 6 expression in K-562 (A) and CCRF-CEM (B) whole cell lysates.

RESEARCH USE

For research use only, not for use in diagnostic procedures.

PROTOCOLS

See our web site at www.scbt.com for detailed protocols and support products.

Alexa Fluor[®] is a trademark of Molecular Probes, Inc., Oregon, USA