

β-catenin (H-2): sc-376805

BACKGROUND

The catenins, α , β and γ , are proteins which bind to the highly conserved, intracellular cytoplasmic tail of E-cadherin. Together, the catenin/cadherin complexes play an important role mediating cellular adhesion. α -catenin was initially described as an E-cadherin associated protein, and since has been shown to associate with other members of the cadherin family, such as N-cadherin and P-cadherin. β -catenin associates with the cytoplasmic portion of E-cadherin, which is necessary for the function of E-cadherin as an adhesion molecule. β -catenin has also been found in complexes with the tumor suppressor protein APC. γ -catenin, also known as plakoglobin, binds with α -catenin and N-cadherin. It has been shown that the transmembrane phosphatase PTP μ associates with catenin/cadherin complexes and may regulate complex signaling.

CHROMOSOMAL LOCATION

Genetic locus: CTNNB1 (human) mapping to 3p22.1; Ctnnb1 (mouse) mapping to 9 F4.

SOURCE

β -catenin (H-2) is a mouse monoclonal antibody specific for an epitope mapping between amino acids 755-781 at the C-terminus of β -catenin of human origin.

PRODUCT

Each vial contains 200 μ g IgG_{2a} kappa light chain in 1.0 ml of PBS with < 0.1% sodium azide and 0.1% gelatin.

Blocking peptide available for competition studies, sc-376805 P, (100 μ g peptide in 0.5 ml PBS containing < 0.1% sodium azide and 0.2% stabilizer protein).

APPLICATIONS

β -catenin (H-2) is recommended for detection of β -catenin of mouse, rat and human origin by Western Blotting (starting dilution 1:100, dilution range 1:100-1:1000), immunoprecipitation [1-2 μ g per 100-500 μ g of total protein (1 ml of cell lysate)], immunofluorescence (starting dilution 1:50, dilution range 1:50-1:500), immunohistochemistry (including paraffin-embedded sections) (starting dilution 1:50, dilution range 1:50-1:500) and solid phase ELISA (starting dilution 1:30, dilution range 1:30-1:3000).

β -catenin (H-2) is also recommended for detection of β -catenin in additional species, including equine, canine, bovine, porcine and avian.

Suitable for use as control antibody for β -catenin siRNA (h): sc-29209, β -catenin siRNA (m): sc-29210, β -catenin siRNA (r): sc-270011, β -catenin shRNA Plasmid (h): sc-29209-SH, β -catenin shRNA Plasmid (m): sc-29210-SH, β -catenin shRNA Plasmid (r): sc-270011-SH, β -catenin shRNA (h) Lentiviral Particles: sc-29209-V, β -catenin shRNA (m) Lentiviral Particles: sc-29210-V and β -catenin shRNA (r) Lentiviral Particles: sc-270011-V.

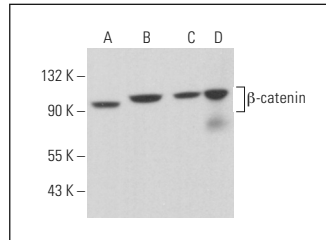
Molecular Weight of β -catenin: 92 kDa.

Positive Controls: PC-12 cell lysate: sc-2250, NIH/3T3 whole cell lysate: sc-2210 or C6 whole cell lysate: sc-364373.

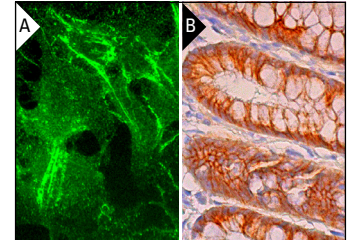
RECOMMENDED SUPPORT REAGENTS

To ensure optimal results, the following support reagents are recommended: 1) Western Blotting: use m-IgG κ BP-HRP: sc-516102 or m-IgG κ BP-HRP (Cruz Marker): sc-516102-CM (dilution range: 1:1000-1:10000), Cruz Marker™ Molecular Weight Standards: sc-2035, UltraCruz® Blocking Reagent: sc-516214 and Western Blotting Luminol Reagent: sc-2048. 2) Immunoprecipitation: use Protein A/G PLUS-Agarose: sc-2003 (0.5 ml agarose/2.0 ml). 3) Immunofluorescence: use m-IgG κ BP-FITC: sc-516140 or m-IgG κ BP-PE: sc-516141 (dilution range: 1:50-1:200) with UltraCruz® Mounting Medium: sc-24941 or UltraCruz® Hard-set Mounting Medium: sc-359850. 4) Immunohistochemistry: use m-IgG κ BP-HRP: sc-516102 with DAB, 50X: sc-24982 and Immunohistomount: sc-45086, or Organo/Limonene Mount: sc-45087.

DATA



β -catenin (H-2): sc-376805. Western blot analysis of β -catenin expression in NIH/3T3 (A), PC-12 (B) and C6 (C) whole cell lysates and rat brain tissue extract (D).



β -catenin (H-2): sc-376805. Immunofluorescence staining of formalin-fixed Hep G2 cells showing membrane and cytoskeletal localization (A). Immunoperoxidase staining of formalin fixed, paraffin-embedded human rectum tissue showing membrane and cytoplasmic staining of glandular cells (B).

STORAGE


Store at 4° C, **DO NOT FREEZE**. Stable for one year from the date of shipment. Non-hazardous. No MSDS required.

RESEARCH USE

For research use only, not for use in diagnostic procedures.

PROTOCOLS

See our web site at www.scbt.com for detailed protocols and support products.



See **β -catenin (E-5): sc-7963** for β -catenin antibody conjugates, including AC, HRP, FITC, PE, and Alexa Fluor® 488, 546, 594, 647, 680 and 790.