

spectrin α II (B-2): sc-376849

BACKGROUND

Spectrin, an Actin binding protein that is a major component of the cytoskeletal superstructure of the erythrocyte plasma membrane, is essential in determining the properties of the membrane including its shape and deformability. spectrins function as membrane organizers and stabilizers, composed of non-homologous α and β chains, which aggregate side-to-side in an antiparallel fashion to form dimers, tetramers, and higher polymers. spectrin α I and spectrin β I are present in erythrocytes, whereas spectrin α II (also designated fodrin α) and spectrin β II (also designated fodrin β) are present in other somatic cells. The spectrin tetramers in erythrocytes act as barriers to lateral diffusion, but spectrin dimers seem to lack this function. Activation of calpain results in the breakdown of spectrin α II, a neuronal cytoskeleton protein.

CHROMOSOMAL LOCATION

Genetic locus: SPTAN1 (human) mapping to 9q34.11; Spna2 (mouse) mapping to 2 B.

SOURCE

spectrin α II (B-2) is a mouse monoclonal antibody specific for an epitope mapping between amino acids 2431-2460 at the C-terminus of spectrin α II of human origin.

PRODUCT

Each vial contains 200 μ g IgG₁ kappa light chain in 1.0 ml of PBS with < 0.1% sodium azide and 0.1% gelatin.

Blocking peptide available for competition studies, sc-376849 P, (100 μ g peptide in 0.5 ml PBS containing < 0.1% sodium azide and 0.2% stabilizer protein).

APPLICATIONS

spectrin α II (B-2) is recommended for detection of spectrin α II of mouse, rat and human origin by Western Blotting (starting dilution 1:100, dilution range 1:100-1:1000), immunoprecipitation [1-2 μ g per 100-500 μ g of total protein (1 ml of cell lysate)], immunofluorescence (starting dilution 1:50, dilution range 1:50-1:500), immunohistochemistry (including paraffin-embedded sections) (starting dilution 1:50, dilution range 1:50-1:500) and solid phase ELISA (starting dilution 1:30, dilution range 1:30-1:3000).

spectrin α II (B-2) is also recommended for detection of spectrin α II in additional species, including equine, canine, bovine and porcine.

Suitable for use as control antibody for spectrin α II siRNA (h): sc-36549, spectrin α II siRNA (m): sc-36550, spectrin α II shRNA Plasmid (h): sc-36549-SH, spectrin α II shRNA Plasmid (m): sc-36550-SH, spectrin α II shRNA (h) Lentiviral Particles: sc-36549-V and spectrin α II shRNA (m) Lentiviral Particles: sc-36550-V.

Molecular Weight of spectrin α II precursor: 240 kDa.

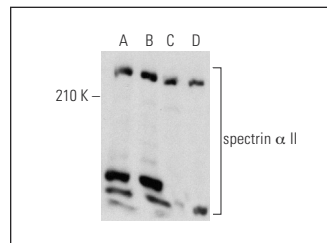
Molecular Weight of spectrin α II cleavage products: 150/120/110 kDa.

Positive Controls: NIH/3T3 whole cell lysate: sc-2210, Jurkat whole cell lysate: sc-2204 or A-10 cell lysate: sc-3806.

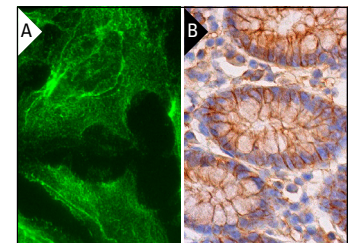
RECOMMENDED SUPPORT REAGENTS

To ensure optimal results, the following support reagents are recommended: 1) Western Blotting: use m-IgG κ BP-HRP: sc-516102 or m-IgG κ BP-HRP (Cruz Marker): sc-516102-CM (dilution range: 1:1000-1:10000), Cruz Marker™ Molecular Weight Standards: sc-2035, UltraCruz® Blocking Reagent: sc-516214 and Western Blotting Luminol Reagent: sc-2048. 2) Immunoprecipitation: use Protein A/G PLUS-Agarose: sc-2003 (0.5 ml agarose/2.0 ml). 3) Immunofluorescence: use m-IgG κ BP-FITC: sc-516140 or m-IgG κ BP-PE: sc-516141 (dilution range: 1:50-1:200) with UltraCruz® Mounting Medium: sc-24941 or UltraCruz® Hard-set Mounting Medium: sc-359850. 4) Immunohistochemistry: use m-IgG κ BP-HRP: sc-516102 with DAB, 50X: sc-24982 and Immunohistomount: sc-45086, or Organo/Limonene Mount: sc-45087.

DATA



spectrin α II (B-2): sc-376849. Western blot analysis of spectrin α II expression in SH-SY5Y (A), Jurkat (B), NIH/3T3 (C) and A-10 (D) whole cell lysates.



spectrin α II (B-2): sc-376849. Immunofluorescence staining of methanol-fixed HeLa cells showing cytoskeletal localization (A). Immunoperoxidase staining of formalin fixed, paraffin-embedded human colon tissue showing membrane and cytoplasmic staining of glandular cells (B).

SELECT PRODUCT CITATIONS

- Piersma, B., et al. 2018. α II-spectrin and β II-spectrin do not affect TGF β 1-induced myofibroblast differentiation. *Cell Tissue Res.* 374: 165-175.

STORAGE

Store at 4° C, **DO NOT FREEZE**. Stable for one year from the date of shipment. Non-hazardous. No MSDS required.

RESEARCH USE

For research use only, not for use in diagnostic procedures.

PROTOCOLS

See our web site at www.scbt.com for detailed protocols and support products.



See **spectrin α II (C-3): sc-48382** for spectrin α II antibody conjugates, including AC, HRP, FITC, PE, and Alexa Fluor® 488, 546, 594, 647, 680 and 790.