

# pan cathepsin (D-2): sc-377017

## BACKGROUND

The cathepsin family of proteolytic enzymes contains several diverse classes of proteases. The cysteine protease class comprises cathepsins B, L, H, K, S, and O. The aspartyl protease class is composed of cathepsins D and E. Cathepsin G is in the serine protease class. Most cathepsins are lysosomal and each is involved in cellular metabolism, participating in various events such as peptide biosynthesis and protein degradation. Cathepsin L has been identified as a protein that is most closely related to cathepsin H.

## REFERENCES

1. Ishidoh, K., et al. 1987. Molecular cloning and sequencing of cDNA for rat cathepsin L. *FEBS Lett.* 223: 69-73.
2. Ishidoh, K., et al. 1987. Molecular cloning and sequencing of cDNA for rat cathepsin H. Homology in pro-peptide regions of cysteine proteases. *FEBS Lett.* 226: 33-37.
3. Redecker, B., et al. 1991. Molecular organization of the human cathepsin D gene. *DNA Cell Biol.* 10: 423-431.
4. Shi, G.P., et al. 1992. Molecular cloning and expression of human alveolar macrophage cathepsin S, an elastolytic cysteine protease. *J. Biol. Chem.* 267: 7258-7262.
5. Heusel, J.W., et al. 1993. Molecular cloning, chromosomal location, and tissue-specific expression of the murine cathepsin G gene. *Blood* 81: 1614-1623.
6. Guenette, R.S., et al. 1994. Cathepsin B, a cysteine protease implicated in metastatic progression, is also expressed during regression of the rat prostate and mammary glands. *Eur. J. Biochem.* 226: 311-321.
7. Shi, G.P., et al. 1995. Molecular cloning of human cathepsin O, a novel endoproteinase and homologue of rabbit OC2. *FEBS Lett.* 357: 129-134.
8. Okamoto, K., et al. 1995. Isolation and sequencing of two cDNA clones encoding rat spleen cathepsin E and analysis of the activation of purified procathepsin E. *Arch. Biochem. Biophys.* 322: 103-111.
9. Rantakokko, J., et al. 1996. Mouse cathepsin K: cDNA cloning and predominant expression of the gene in osteoclasts, and in some hypertrophic chondrocytes during mouse development. *FEBS Lett.* 393: 307-313.

## SOURCE

pan cathepsin (D-2) is a mouse monoclonal antibody specific for an epitope mapping between amino acids 107-145 near the N-terminus of cathepsin of human origin.

## PRODUCT

Each vial contains 200 µg IgG<sub>2a</sub> kappa light chain in 1.0 ml of PBS with < 0.1% sodium azide and 0.1% gelatin.

Blocking peptide available for competition studies, sc-377017 P, (100 µg peptide in 0.5 ml PBS containing < 0.1% sodium azide and 0.2% stabilizer protein).

## APPLICATIONS

pan cathepsin (D-2) is recommended for detection of a broad range of cathepsin proteins of mouse, rat and human origin by Western Blotting (starting dilution 1:100, dilution range 1:100-1:1000), immunoprecipitation [1-2 µg per 100-500 µg of total protein (1 ml of cell lysate)], immunofluorescence (starting dilution 1:50, dilution range 1:50-1:500), immunohistochemistry (including paraffin-embedded sections) (starting dilution 1:50, dilution range 1:50-1:500) and solid phase ELISA (starting dilution 1:30, dilution range 1:30-1:3000).

Molecular Weight of pan cathepsin: 38 kDa.

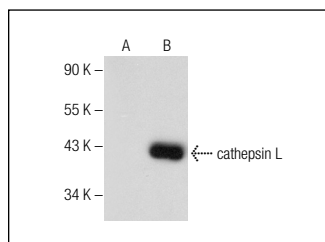
Positive Controls: cathepsin L (h): 293 Lysate: sc-158353 or A549 cell lysate: sc-2413.

## RECOMMENDED SUPPORT REAGENTS

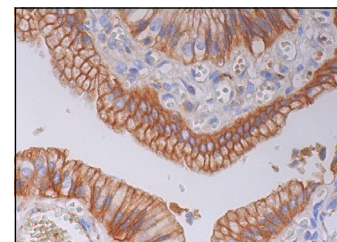
To ensure optimal results, the following support reagents are recommended:

- 1) Western Blotting: use m-IgGκ BP-HRP: sc-516102 or m-IgGκ BP-HRP (Cruz Marker): sc-516102-CM (dilution range: 1:1000-1:10000), Cruz Marker™ Molecular Weight Standards: sc-2035, UltraCruz® Blocking Reagent: sc-516214 and Western Blotting Luminol Reagent: sc-2048.
- 2) Immunoprecipitation: use Protein A/G PLUS-Agarose: sc-2003 (0.5 ml agarose/2.0 ml).
- 3) Immunofluorescence: use m-IgGκ BP-FITC: sc-516140 or m-IgGκ BP-PE: sc-516141 (dilution range: 1:50-1:200) with UltraCruz® Mounting Medium: sc-24941 or UltraCruz® Hard-set Mounting Medium: sc-359850.
- 4) Immunohistochemistry: use m-IgGκ BP-HRP: sc-516102 with DAB, 50X: sc-24982 and Immunohistomount: sc-45086, or Organo/Limonene Mount: sc-45087.

## DATA



pan cathepsin (D-2): sc-377017. Western blot analysis of cathepsin L expression in non-transfected: sc-110760 (A) and human cathepsin L transfected: sc-158353 (B) 293 whole cell lysates.



pan cathepsin (D-2): sc-377017. Immunoperoxidase staining of formalin fixed, paraffin-embedded human gall bladder tissue showing cytoplasmic and membrane staining of glandular cells.

## STORAGE

Store at 4° C, \*\*DO NOT FREEZE\*\*. Stable for one year from the date of shipment. Non-hazardous. No MSDS required.

## RESEARCH USE

For research use only, not for use in diagnostic procedures.

## PROTOCOLS

See our web site at [www.scbt.com](http://www.scbt.com) for detailed protocols and support products.