

ENA-78 (D-6): sc-377026

BACKGROUND

Chemokines are members of a superfamily of inducible, secreted, pro-inflammatory cytokines. Members of the chemokine family exhibit 20% to 50% homology in their predicted amino acid sequences and are divided into four subfamilies. In the C-X-C or α subfamily, the first two of four cysteine motifs are separated by another amino acid residue. The C-X-C chemokine subfamily includes IL-8, GRO $\alpha/\beta/\gamma$ (and the murine homologs KC, MIP-2 α and MIP-2 β), platelet basic protein, ENA-78, GCP-2, PF4, IP-10 (and its murine homolog, CRG) and MIG.

REFERENCES

1. Oppenheim, J.J., et al. 1991. Properties of the novel proinflammatory supergene "intercrine" cytokine family. *Annu. Rev. Immunol.* 9: 617-648.
2. Schall, T.J. 1991. Biology of the RANTES/SIS cytokine family. *Cytokine* 3: 165-183.
3. Miller, M.D. and Krangel, M.S. 1992. Biology and biochemistry of the chemokines: a family of chemotactic and inflammatory cytokines. *Crit. Rev. Immunol.* 12: 17-46.
4. Taub, D.D. and Oppenheim, J.J. 1993. Review of the chemokine meeting of the Third International Symposium of Chemotactic Cytokines. *Cytokine* 5: 175-179.
5. Roth, S.J., et al. 1995. C-C chemokines, but not the C-X-C chemokines interleukin-8 and interferon- γ inducible protein-10, stimulate transendothelial chemotaxis of T lymphocytes. *Eur. J. Immunol.* 25: 3482-3488.

CHROMOSOMAL LOCATION

Genetic locus: CXCL5/CXCL6 (human) mapping to 4q13.3.

SOURCE

ENA-78 (D-6) is a mouse monoclonal antibody specific for an epitope mapping between amino acids 85-114 at the C-terminus of ENA-78 of human origin.

PRODUCT

Each vial contains 200 μ g IgG₁ kappa light chain in 1.0 ml of PBS with < 0.1% sodium azide and 0.1% gelatin.

ENA-78 (D-6) is available conjugated to agarose (sc-377026 AC), 500 μ g/0.25 ml agarose in 1 ml, for IP; to HRP (sc-377026 HRP), 200 μ g/ml, for WB, IHC(P) and ELISA; to either phycoerythrin (sc-377026 PE), fluorescein (sc-377026 FITC), Alexa Fluor[®] 488 (sc-377026 AF488), Alexa Fluor[®] 546 (sc-377026 AF546), Alexa Fluor[®] 594 (sc-377026 AF594) or Alexa Fluor[®] 647 (sc-377026 AF647), 200 μ g/ml, for WB (RGB), IF, IHC(P) and FCM; and to either Alexa Fluor[®] 680 (sc-377026 AF680) or Alexa Fluor[®] 790 (sc-377026 AF790), 200 μ g/ml, for Near-Infrared (NIR) WB, IF and FCM.

Blocking peptide available for competition studies, sc-377026 P, (100 μ g peptide in 0.5 ml PBS containing < 0.1% sodium azide and 0.2% stabilizer protein).

Alexa Fluor[®] is a trademark of Molecular Probes, Inc., Oregon, USA

APPLICATIONS

ENA-78 (D-6) is recommended for detection of ENA-78 and GCP-2 of human origin by Western Blotting (starting dilution 1:100, dilution range 1:100-1:1000), immunoprecipitation [1-2 μ g per 100-500 μ g of total protein (1 ml of cell lysate)], immunofluorescence (starting dilution 1:50, dilution range 1:50-1:500) and solid phase ELISA (starting dilution 1:30, dilution range 1:30-1:3000).

Molecular Weight of ENA-78: 8 kDa.

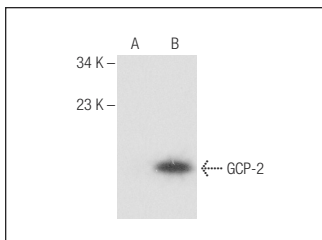
Molecular Weight of GCP-2: 8 kDa.

Positive Controls: GCP-2 (h): 293T Lysate: sc-113480.

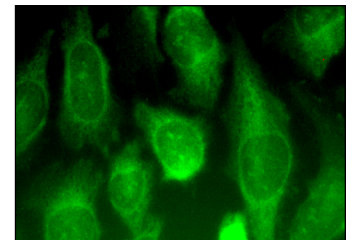
RECOMMENDED SUPPORT REAGENTS

To ensure optimal results, the following support reagents are recommended: 1) Western Blotting: use m-IgG κ BP-HRP: sc-516102 or m-IgG κ BP-HRP (Cruz Marker): sc-516102-CM (dilution range: 1:1000-1:10000), Cruz Marker[™] Molecular Weight Standards: sc-2035, UltraCruz[®] Blocking Reagent: sc-516214 and Western Blotting Luminol Reagent: sc-2048. 2) Immunoprecipitation: use Protein A/G PLUS-Agarose: sc-2003 (0.5 ml agarose/2.0 ml). 3) Immunofluorescence: use m-IgG κ BP-FITC: sc-516140 or m-IgG κ BP-PE: sc-516141 (dilution range: 1:50-1:200) with UltraCruz[®] Mounting Medium: sc-24941 or UltraCruz[®] Hard-set Mounting Medium: sc-359850.

DATA



ENA-78 (D-6): sc-377026. Western blot analysis of GCP-2 expression in non-transfected: sc-117752 (A) and human GCP-2 transfected: sc-113480 (B) 293T whole cell lysates.



ENA-78 (D-6): sc-377026. Immunofluorescence staining of methanol-fixed HeLa cells showing cytoplasmic localization.

SELECT PRODUCT CITATIONS

1. Wang, Q., et al. 2020. ARC is a critical protector against inflammatory bowel disease (IBD) and IBD-associated colorectal tumorigenesis. *Cancer Res.* 80: 4158-4171.
2. Wu, C., et al. 2021. Hepatic BRD4 is upregulated in liver fibrosis of various etiologies and positively correlated to fibrotic severity. *Front. Med.* 8: 683506.

STORAGE

Store at 4° C, **DO NOT FREEZE**. Stable for one year from the date of shipment. Non-hazardous. No MSDS required.

RESEARCH USE

For research use only, not for use in diagnostic procedures.