

EAG (C-9): sc-377236

BACKGROUND

Streptococcus equi subspecies *equi* (*S. equi*) is a host-restricted pathogen that is the cause of a prevalent and infectious equine disease known as strangles. Highly contagious, strangles causes a profound inflammatory response, with symptoms including lymphodendopathy of the head and neck, fever, nasal discharge and lack of appetite in the affected horse. Strangles is most commonly a problem in young horses as their immune systems are not fully developed. EAG (Ig, α 2-macroglobulin and albumin binding protein EAG (*Streptococcus equi* subspecies *equi* 4047)) is a 429 amino acid protein.

REFERENCES

1. Chanter, N., et al. 2000. *Streptococcus equi* with truncated M-proteins isolated from outwardly healthy horses. *Microbiology* 146: 1361-1369.
2. Harrington, D.J., et al. 2002. The molecular basis of *Streptococcus equi* infection and disease. *Microbes Infect.* 4: 501-510.
3. Timoney, J.F. 2004. The pathogenic equine streptococci. *Vet. Res.* 35: 397-409.
4. Davidson, A., et al. 2008. Lack of correlation between antibody titers to Fibrinogen-binding protein of *Streptococcus equi* and persistent carriers of strangles. *J. Vet. Diagn. Invest.* 20: 457-462.
5. Holden, M.T., et al. 2009. Genomic evidence for the evolution of *Streptococcus equi*: host restriction, increased virulence, and genetic exchange with human pathogens. *PLoS Pathog.* 5: e1000346.
6. Boyle, A. 2011. *Streptococcus equi* subspecies *equi* infection (strangles) in horses. *Compend. Contin. Educ. Vet.* 33: E1-E7.
7. Waller, A.S., et al. 2011. *Streptococcus equi*: a pathogen restricted to one host. *J. Med. Microbiol.* 60: 1231-1240.

SOURCE

EAG (C-9) is a mouse monoclonal antibody raised against amino acids 215-429 of EAG of *Streptococcus equi* subsp. *equi* origin.

PRODUCT

Each vial contains 200 μ g IgG₁ kappa light chain in 1.0 ml of PBS with < 0.1% sodium azide and 0.1% gelatin.

EAG (C-9) is available conjugated to agarose (sc-377236 AC), 500 μ g/0.25 ml agarose in 1 ml, for IP; to HRP (sc-377236 HRP), 200 μ g/ml, for WB, IHC(P) and ELISA; to either phycoerythrin (sc-377236 PE), fluorescein (sc-377236 FITC), Alexa Fluor® 488 (sc-377236 AF488), Alexa Fluor® 546 (sc-377236 AF546), Alexa Fluor® 594 (sc-377236 AF594) or Alexa Fluor® 647 (sc-377236 AF647), 200 μ g/ml, for WB (RGB), IF, IHC(P) and FCM; and to either Alexa Fluor® 680 (sc-377236 AF680) or Alexa Fluor® 790 (sc-377236 AF790), 200 μ g/ml, for Near-Infrared (NIR) WB, IF and FCM.

Alexa Fluor® is a trademark of Molecular Probes, Inc., Oregon, USA

RESEARCH USE

For research use only, not for use in diagnostic procedures.

APPLICATIONS

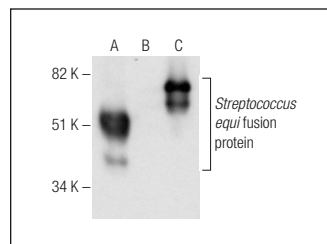
EAG (C-9) is recommended for detection of EAG of *S. equi* origin by Western Blotting (starting dilution 1:100, dilution range 1:100-1:1000), immunoprecipitation [1-2 μ g per 100-500 μ g of total protein (1 ml of cell lysate)], immunofluorescence (starting dilution 1:50, dilution range 1:50-1:500) and solid phase ELISA (starting dilution 1:30, dilution range 1:30-1:3000).

Molecular Weight of EAG: 54 kDa.

RECOMMENDED SUPPORT REAGENTS

To ensure optimal results, the following support reagents are recommended: 1) Western Blotting: use m-IgG κ BP-HRP: sc-516102 or m-IgG κ BP-HRP (Cruz Marker): sc-516102-CM (dilution range: 1:1000-1:10000), Cruz Marker™ Molecular Weight Standards: sc-2035, UltraCruz® Blocking Reagent: sc-516214 and Western Blotting Luminol Reagent: sc-2048. 2) Immunoprecipitation: use Protein A/G PLUS-Agarose: sc-2003 (0.5 ml agarose/2.0 ml). 3) Immunofluorescence: use m-IgG κ BP-FITC: sc-516140 or m-IgG κ BP-PE: sc-516141 (dilution range: 1:50-1:200) with UltraCruz® Mounting Medium: sc-24941 or UltraCruz® Hard-set Mounting Medium: sc-359850.

DATA



EAG (C-9): sc-377236. Western blot analysis of *Streptococcus equi* recombinant EAG (amino acids 215-429) (A), EAG (amino acids 1-214) (B) and EAG (FL-429) (C) fusion proteins.

STORAGE

Store at 4° C, **DO NOT FREEZE**. Stable for one year from the date of shipment. Non-hazardous. No MSDS required.

PROTOCOLS

See our web site at www.scbt.com for detailed protocols and support products.