

# UFD1 (B-7): sc-377265

## BACKGROUND

Ubiquitin-mediated proteolysis requires the transfer of ubiquitin (Ub) to lysine groups on selected cellular proteins, which then potentiates the proteolytic degradation of these protein conjugates by the 26S Proteasome. Ub-fusions are cleaved by Ub-specific processing proteases (UBPs) or alternatively by the Ub-fusion degradation (UFD) pathway. The UBP pathway targets the C-terminal glycine residue on Ub that is involved in the formation of Ub-conjugates, while UFD proteins preferentially cleave Ub-conjugated proteins that contain an amino acid substitution at this glycine residue. The UFD1 protein was originally characterized in the yeast *S. cerevisiae* and subsequently, the human homolog UFD1 or UFD1L was identified. *In vitro*, UFD1 attenuates the degradation of Ub-fusions, which have a proline or valine residue substituted at the Gly76 moiety, by the selective multiubiquitination of the Ub chain of the Ub-conjugate. Mutations within the UFD1 gene are implicated in the development of CATCH22 syndrome, which is characterized by cardiac defects, cleft palate and hypocalcemia, suggesting that this proteolytic pathway may be involved in the progression of these developmental defects.

## REFERENCES

- Jentsch, S. 1992. The ubiquitin-conjugation system. *Annu. Rev. Genet.* 26: 179-207.
- Johnson, E.S., et al. 1995. A proteolytic pathway that recognizes ubiquitin as a degradation signal. *J. Biol. Chem.* 270: 17442-17456.
- Hochstrasser, M. 1995. Ubiquitin, proteasomes, and the regulation of intracellular protein degradation. *Curr. Opin. Cell Biol.* 7: 215-223.
- Haas, A.L., et al. 1997. Pathways of ubiquitin conjugation. *FASEB J.* 11: 1257-1268.

## CHROMOSOMAL LOCATION

Genetic locus: UFD1L (human) mapping to 22q11.21; Ufd1l (mouse) mapping to 16 A3.

## SOURCE

UFD1 (B-7) is a mouse monoclonal antibody raised against amino acids 181-307 mapping at the C-terminus of UFD1 of human origin.

## PRODUCT

Each vial contains 200 µg IgG<sub>2b</sub> kappa light chain in 1.0 ml of PBS with < 0.1% sodium azide and 0.1% gelatin.

UFD1 (B-7) is available conjugated to agarose (sc-377265 AC), 500 µg/0.25 ml agarose in 1 ml, for IP; to HRP (sc-377265 HRP), 200 µg/ml, for WB, IHC(P) and ELISA; to either phycoerythrin (sc-377265 PE), fluorescein (sc-377265 FITC), Alexa Fluor® 488 (sc-377265 AF488), Alexa Fluor® 546 (sc-377265 AF546), Alexa Fluor® 594 (sc-377265 AF594) or Alexa Fluor® 647 (sc-377265 AF647), 200 µg/ml, for WB (RGB), IF, IHC(P) and FCM; and to either Alexa Fluor® 680 (sc-377265 AF680) or Alexa Fluor® 790 (sc-377265 AF790), 200 µg/ml, for Near-Infrared (NIR) WB, IF and FCM.

Alexa Fluor® is a trademark of Molecular Probes, Inc., Oregon, USA

## APPLICATIONS

UFD1 (B-7) is recommended for detection of UFD1 of mouse, rat and human origin by Western Blotting (starting dilution 1:100, dilution range 1:100-1:1000), immunoprecipitation [1-2 µg per 100-500 µg of total protein (1 ml of cell lysate)], immunofluorescence (starting dilution 1:50, dilution range 1:50-1:500) and solid phase ELISA (starting dilution 1:30, dilution range 1:30-1:3000).

UFD1 (B-7) is also recommended for detection of UFD1 in additional species, including equine and canine.

Suitable for use as control antibody for UFD1 siRNA (h): sc-41689, UFD1 siRNA (m): sc-41690, UFD1 shRNA Plasmid (h): sc-41689-SH, UFD1 shRNA Plasmid (m): sc-41690-SH, UFD1 shRNA (h) Lentiviral Particles: sc-41689-V and UFD1 shRNA (m) Lentiviral Particles: sc-41690-V.

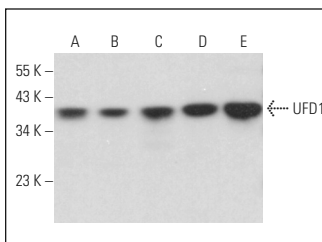
Molecular Weight of UFD1: 40 kDa.

Positive Controls: HeLa whole cell lysate: sc-2200, Jurkat whole cell lysate: sc-2204 or NIH/3T3 whole cell lysate: sc-2210.

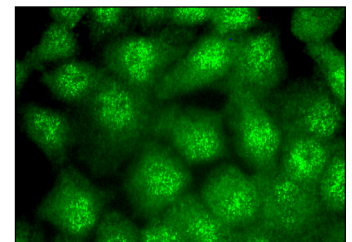
## RECOMMENDED SUPPORT REAGENTS

To ensure optimal results, the following support reagents are recommended: 1) Western Blotting: use m-IgGκ BP-HRP: sc-516102 or m-IgGκ BP-HRP (Cruz Marker): sc-516102-CM (dilution range: 1:1000-1:10000), Cruz Marker™ Molecular Weight Standards: sc-2035, UltraCruz® Blocking Reagent: sc-516214 and Western Blotting Luminol Reagent: sc-2048. 2) Immunoprecipitation: use Protein A/G PLUS-Agarose: sc-2003 (0.5 ml agarose/2.0 ml). 3) Immunofluorescence: use m-IgGκ BP-FITC: sc-516140 or m-IgGκ BP-PE: sc-516141 (dilution range: 1:50-1:200) with UltraCruz® Mounting Medium: sc-24941 or UltraCruz® Hard-set Mounting Medium: sc-359850.

## DATA



UFD1 (B-7): sc-377265. Western blot analysis of UFD1 expression in HeLa (A), Jurkat (B), 3611-RF (C), NIH/3T3 (D) and 3T3-L1 (E) whole cell lysates. Detection reagent used: m-IgGκ BP-HRP: sc-516102.



UFD1 (B-7): sc-377265. Immunofluorescence staining of formalin-fixed A-431 cells showing nuclear and cytoplasmic localization.

## STORAGE

Store at 4° C, \*\*DO NOT FREEZE\*\*. Stable for one year from the date of shipment. Non-hazardous. No MSDS required.

## RESEARCH USE

For research use only, not for use in diagnostic procedures.