

Delta (G-1): sc-377310

BACKGROUND

The LIN-12/Notch family of transmembrane receptors is believed to play a central role in development by regulating cell fate decisions. Notch proteins have been found to be overexpressed or rearranged in human tumors. Ligands for Notch include Jagged, Jagged-2 and Delta. While blocking the differentiation of progenitor cells into the B cell lineage, Delta promotes the emergence of a population of cells with T cell/NK-cell characteristics. Delta is a membrane protein expressed in heart, pancreas, brain and muscle during gastrulation and early organogenesis, and in adult heart and lung.

CHROMOSOMAL LOCATION

Genetic locus: DLL1 (human) mapping to 6q27; Dll1 (mouse) mapping to 17 A2.

SOURCE

Delta (G-1) is a mouse monoclonal antibody raised against amino acids 459-723 of Delta of human origin.

PRODUCT

Each vial contains 200 µg IgG₁ kappa light chain in 1.0 ml of PBS with < 0.1% sodium azide and 0.1% gelatin.

Delta (G-1) is available conjugated to agarose (sc-377310 AC), 500 µg/0.25 ml agarose in 1 ml, for IP; to HRP (sc-377310 HRP), 200 µg/ml, for WB, IHC(P) and ELISA; to either phycoerythrin (sc-377310 PE), fluorescein (sc-377310 FITC), Alexa Fluor[®] 488 (sc-377310 AF488), Alexa Fluor[®] 546 (sc-377310 AF546), Alexa Fluor[®] 594 (sc-377310 AF594) or Alexa Fluor[®] 647 (sc-377310 AF647), 200 µg/ml, for WB (RGB), IF, IHC(P) and FCM; and to either Alexa Fluor[®] 680 (sc-377310 AF680) or Alexa Fluor[®] 790 (sc-377310 AF790), 200 µg/ml, for Near-Infrared (NIR) WB, IF and FCM.

Alexa Fluor[®] is a trademark of Molecular Probes, Inc., Oregon, USA

STORAGE

Store at 4° C, **DO NOT FREEZE**. Stable for one year from the date of shipment. Non-hazardous. No MSDS required.

APPLICATIONS

Delta (G-1) is recommended for detection of Delta of mouse, rat and human origin by Western Blotting (starting dilution 1:100, dilution range 1:100-1:1000), immunoprecipitation [1-2 µg per 100-500 µg of total protein (1 ml of cell lysate)], immunofluorescence (starting dilution 1:50, dilution range 1:50-1:500) and solid phase ELISA (starting dilution 1:30, dilution range 1:30-1:3000).

Suitable for use as control antibody for Delta siRNA (h): sc-37200, Delta siRNA (m): sc-37201, Delta shRNA Plasmid (h): sc-37200-SH, Delta shRNA Plasmid (m): sc-37201-SH, Delta shRNA (h) Lentiviral Particles: sc-37200-V and Delta shRNA (m) Lentiviral Particles: sc-37201-V.

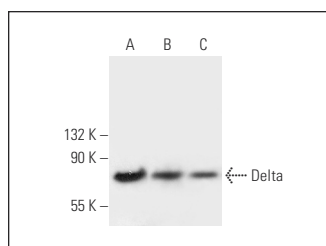
Molecular Weight of Delta: 75 kDa.

Positive Controls: ECV304 cell lysate: sc-2269, Hep G2 cell lysate: sc-2227 or PC-3 cell lysate: sc-2220.

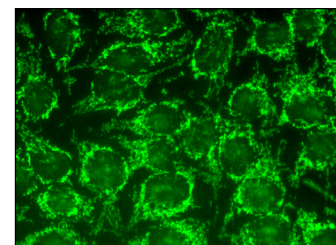
RECOMMENDED SUPPORT REAGENTS

To ensure optimal results, the following support reagents are recommended: 1) Western Blotting: use m-IgGκ BP-HRP: sc-516102 or m-IgGκ BP-HRP (Cruz Marker): sc-516102-CM (dilution range: 1:1000-1:10000), Cruz Marker[™] Molecular Weight Standards: sc-2035, UltraCruz[®] Blocking Reagent: sc-516214 and Western Blotting Luminol Reagent: sc-2048. 2) Immunoprecipitation: use Protein A/G PLUS-Agarose: sc-2003 (0.5 ml agarose/2.0 ml). 3) Immunofluorescence: use m-IgGκ BP-FITC: sc-516140 or m-IgGκ BP-PE: sc-516141 (dilution range: 1:50-1:200) with UltraCruz[®] Mounting Medium: sc-24941 or UltraCruz[®] Hard-set Mounting Medium: sc-359850.

DATA



Delta (G-1): sc-377310. Western blot analysis of Delta expression in ECV304 (A), PC-3 (B) and Hep G2 (C) whole cell lysates.



Delta (G-1): sc-377310. Immunofluorescence staining of formalin-fixed HeLa cells showing cytoplasmic vesicles localization.

SELECT PRODUCT CITATIONS

1. Roher, A.E., et al. 2014. Neuropathological and biochemical assessments of an Alzheimer's disease patient treated with the γ -secretase inhibitor semagacestat. *Am. J. Neurodegener. Dis.* 3: 115-133.
2. Zhang, H., et al. 2021. Notch pathway activation in infantile heman-giomas. *J. Vasc. Surg. Venous Lymphat. Disord.* 9: 489-496.
3. Tinaburri, L., et al. 2021. The secretome of aged fibroblasts promotes EMT-like phenotype in primary keratinocytes from elderly donors through BDNF-TrkB axis. *J. Invest. Dermatol.* 141: 1052-1062.e12.

RESEARCH USE

For research use only, not for use in diagnostic procedures.

PROTOCOLS

See our web site at www.scbt.com for detailed protocols and support products.