

# Troponin I-FS (C-11): sc-377451

## BACKGROUND

Actin is a highly conserved protein that is expressed in all eukaryotic cells. Actin filaments can form both stable and labile structures and are crucial components of microvilli and the contractile apparatus of muscle cells. Myosin is a hexamer of two heavy chains (MHC) and four light chains (MLC) that interacts with actin to generate the force for diverse cellular movements, including cytokinesis, phagocytosis and muscle contraction. Troponin facilitates the interaction between actin and myosin by binding to calcium. Troponin is made up of at least two subunits, which are divergent in cardiac muscle, fast skeletal muscle and slow skeletal muscle. Structures of skeletal muscle troponin are composed of Troponin C (the sensor), Troponin I (the regulator), and Troponin T (the link to the muscle thin filament). Troponin C is dumbbell-shaped and has a hydrophobic pocket that increases the contractile force of muscle fibers. Troponin C has 2 isoforms: fast and slow. Fast Troponin C has two calcium binding sites while slow/cardiac troponin C has a single calcium binding site.

## CHROMOSOMAL LOCATION

Genetic locus: TNNI2 (human) mapping to 11p15.5; Tnni2 (mouse) mapping to 7 F5.

## SOURCE

Troponin I-FS (C-11) is a mouse monoclonal antibody specific for an epitope mapping between amino acids 143-179 near the C-terminus of Troponin I-FS of human origin.

## PRODUCT

Each vial contains 200 µg IgG<sub>1</sub> kappa light chain in 1.0 ml of PBS with < 0.1% sodium azide and 0.1% gelatin.

Troponin I-FS (C-11) is available conjugated to agarose (sc-377451 AC), 500 µg/0.25 ml agarose in 1 ml, for IP; to HRP (sc-377451 HRP), 200 µg/ml, for WB, IHC(P) and ELISA; to either phycoerythrin (sc-377451 PE), fluorescein (sc-377451 FITC), Alexa Fluor<sup>®</sup> 488 (sc-377451 AF488), Alexa Fluor<sup>®</sup> 546 (sc-377451 AF546), Alexa Fluor<sup>®</sup> 594 (sc-377451 AF594) or Alexa Fluor<sup>®</sup> 647 (sc-377451 AF647), 200 µg/ml, for WB (RGB), IF, IHC(P) and FCM; and to either Alexa Fluor<sup>®</sup> 680 (sc-377451 AF680) or Alexa Fluor<sup>®</sup> 790 (sc-377451 AF790), 200 µg/ml, for Near-Infrared (NIR) WB, IF and FCM.

Blocking peptide available for competition studies, sc-377451 P, (100 µg peptide in 0.5 ml PBS containing < 0.1% sodium azide and 0.2% stabilizer protein).

Alexa Fluor<sup>®</sup> is a trademark of Molecular Probes, Inc., Oregon, USA

## STORAGE

Store at 4° C, **\*\*DO NOT FREEZE\*\***. Stable for one year from the date of shipment. Non-hazardous. No MSDS required.

## PROTOCOLS

See our web site at [www.scbt.com](http://www.scbt.com) for detailed protocols and support products.

## APPLICATIONS

Troponin I-FS (C-11) is recommended for detection of Troponin I-FS of mouse, rat and human origin by Western Blotting (starting dilution 1:100, dilution range 1:100-1:1000), immunoprecipitation [1-2 µg per 100-500 µg of total protein (1 ml of cell lysate)], immunofluorescence (starting dilution 1:50, dilution range 1:50-1:500), immunohistochemistry (including paraffin-embedded sections) (starting dilution 1:50, dilution range 1:50-1:500) and solid phase ELISA (starting dilution 1:30, dilution range 1:30-1:3000).

Troponin I-FS (C-11) is also recommended for detection of Troponin I-FS in additional species, including equine, canine, bovine and porcine.

Suitable for use as control antibody for Troponin I-FS siRNA (h): sc-37037, Troponin I-FS siRNA (m): sc-37038, Troponin I-FS shRNA Plasmid (h): sc-37037-SH, Troponin I-FS shRNA Plasmid (m): sc-37038-SH, Troponin I-FS shRNA (h) Lentiviral Particles: sc-37037-V and Troponin I-FS shRNA (m) Lentiviral Particles: sc-37038-V.

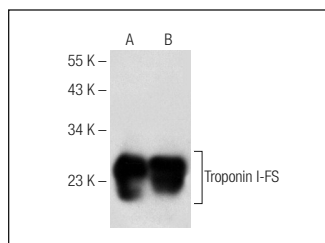
Molecular Weight of Troponin I-FS: 28 kDa.

Positive Controls: human skeletal muscle extract: sc-363776, mouse skeletal muscle extract: sc-364250 or rat skeletal muscle extract: sc-364810.

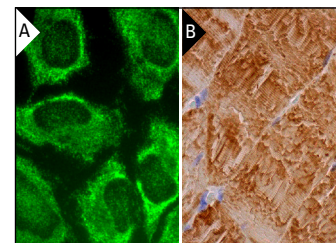
## RECOMMENDED SUPPORT REAGENTS

To ensure optimal results, the following support reagents are recommended: 1) Western Blotting: use m-IgGκ BP-HRP: sc-516102 or m-IgGκ BP-HRP (Cruz Marker): sc-516102-CM (dilution range: 1:1000-1:10000), Cruz Marker<sup>™</sup> Molecular Weight Standards: sc-2035, UltraCruz<sup>®</sup> Blocking Reagent: sc-516214 and Western Blotting Luminol Reagent: sc-2048. 2) Immunoprecipitation: use Protein A/G PLUS-Agarose: sc-2003 (0.5 ml agarose/2.0 ml). 3) Immunofluorescence: use m-IgGκ BP-FITC: sc-516140 or m-IgGκ BP-PE: sc-516141 (dilution range: 1:50-1:200) with UltraCruz<sup>®</sup> Mounting Medium: sc-24941 or UltraCruz<sup>®</sup> Hard-set Mounting Medium: sc-359850. 4) Immunohistochemistry: use m-IgGκ BP-HRP: sc-516102 with DAB, 50X: sc-24982 and Immunohistomount: sc-45086, or Organo/Limonene Mount: sc-45087.

## DATA



Troponin I-FS (C-11): sc-377451. Western blot analysis of Troponin I-FS expression in rat skeletal muscle (A) and mouse skeletal muscle (B) tissue extracts.



Troponin I-FS (C-11): sc-377451. Immunofluorescence staining of methanol-fixed HeLa cells showing cytoplasmic localization (A). Immunoperoxidase staining of formalin fixed, paraffin-embedded human skeletal muscle tissue showing cytoplasmic staining of myocytes (B).

## RESEARCH USE

For research use only, not for use in diagnostic procedures.