

# RWDD4A (C-3): sc-377462

## BACKGROUND

RWDD4 (RWD domain-containing protein 4) is a 188 amino acid protein that contains one RWD domain. The RWDD4 gene is conserved in chimpanzee, bovine, mouse, rat, chicken, zebrafish, fruit fly and mosquito, and maps to human chromosome 4q35.1. Representing approximately 6% of the human genome, chromosome 4 contains nearly 900 genes. Notably, the Huntingtin gene, which is found to encode an expanded glutamine tract in cases of Huntington's disease, is on chromosome 4. FGFR-3 is also encoded on chromosome 4 and has been associated with thanatophoric dwarfism, achondroplasia, Muenke syndrome and bladder cancer. Chromosome 4 is also tied to Ellis-van Creveld syndrome, methylmalonic acidemia and polycystic kidney disease. Chromosome 4 reportedly contains the largest gene deserts (regions of the genome with no protein encoding genes) and has one of the two lowest recombination frequencies of the human chromosomes.

## REFERENCES

- Hillier, L.W., et al. 2005. Generation and annotation of the DNA sequences of human chromosomes 2 and 4. *Nature* 434: 724-731.
- Cowan, C.M., et al. 2006. Selective neuronal degeneration in Huntington's disease. *Curr. Top. Dev. Biol.* 75: 25-71.
- Versteegh, F.G., et al. 2007. Growth hormone analysis and treatment in Ellis-van Creveld syndrome. *Am. J. Med. Genet. A* 143A: 2113-2121.

## CHROMOSOMAL LOCATION

Genetic locus: RWDD4 (human) mapping to 4q35.1; Rwd4a (mouse) mapping to 8 B1.1.

## SOURCE

RWDD4A (C-3) is a mouse monoclonal antibody specific for an epitope mapping between amino acids 151-183 near the C-terminus of RWDD4A of human origin.

## PRODUCT

Each vial contains 200 µg IgG<sub>2a</sub> kappa light chain in 1.0 ml of PBS with < 0.1% sodium azide and 0.1% gelatin.

RWDD4A (C-3) is available conjugated to agarose (sc-377462 AC), 500 µg/0.25 ml agarose in 1 ml, for IP; to HRP (sc-377462 HRP), 200 µg/ml, for WB, IHC(P) and ELISA; to either phycoerythrin (sc-377462 PE), fluorescein (sc-377462 FITC), Alexa Fluor® 488 (sc-377462 AF488), Alexa Fluor® 546 (sc-377462 AF546), Alexa Fluor® 594 (sc-377462 AF594) or Alexa Fluor® 647 (sc-377462 AF647), 200 µg/ml, for WB (RGB), IF, IHC(P) and FCM; and to either Alexa Fluor® 680 (sc-377462 AF680) or Alexa Fluor® 790 (sc-377462 AF790), 200 µg/ml, for Near-Infrared (NIR) WB, IF and FCM.

Blocking peptide available for competition studies, sc-377462 P, (100 µg peptide in 0.5 ml PBS containing < 0.1% sodium azide and 0.2% stabilizer protein).

## STORAGE

Store at 4° C, **\*\*DO NOT FREEZE\*\***. Stable for one year from the date of shipment. Non-hazardous. No MSDS required.

## APPLICATIONS

RWDD4A (C-3) is recommended for detection of RWDD4A of mouse, rat and human origin by Western Blotting (starting dilution 1:100, dilution range 1:100-1:1000), immunoprecipitation [1-2 µg per 100-500 µg of total protein (1 ml of cell lysate)], immunofluorescence (starting dilution 1:50, dilution range 1:50-1:500), immunohistochemistry (including paraffin-embedded sections) (starting dilution 1:50, dilution range 1:50-1:500) and solid phase ELISA (starting dilution 1:30, dilution range 1:30-1:3000).

RWDD4A (C-3) is also recommended for detection of RWDD4A in additional species, including equine, canine, bovine, porcine and avian.

Suitable for use as control antibody for RWDD4A siRNA (h): sc-88908, RWDD4A siRNA (m): sc-153183, RWDD4A shRNA Plasmid (h): sc-88908-SH, RWDD4A shRNA Plasmid (m): sc-153183-SH, RWDD4A shRNA (h) Lentiviral Particles: sc-88908-V and RWDD4A shRNA (m) Lentiviral Particles: sc-153183-V.

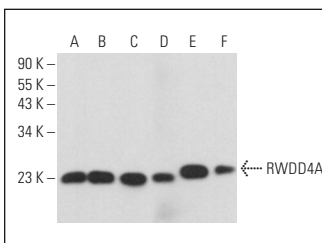
Molecular Weight of RWDD4A: 21 kDa.

Positive Controls: Neuro-2A whole cell lysate: sc-364185, PC-3 cell lysate: sc-2220 or SH-SY5Y cell lysate: sc-3812.

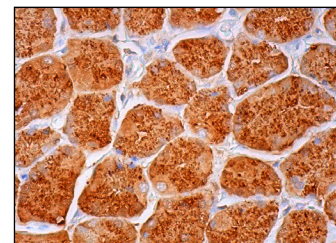
## RECOMMENDED SUPPORT REAGENTS

To ensure optimal results, the following support reagents are recommended: 1) Western Blotting: use m-IgGκ BP-HRP: sc-516102 or m-IgGκ BP-HRP (Cruz Marker): sc-516102-CM (dilution range: 1:1000-1:10000), Cruz Marker™ Molecular Weight Standards: sc-2035, UltraCruz® Blocking Reagent: sc-516214 and Western Blotting Luminol Reagent: sc-2048. 2) Immunoprecipitation: use Protein A/G PLUS-Agarose: sc-2003 (0.5 ml agarose/2.0 ml). 3) Immunofluorescence: use m-IgGκ BP-FITC: sc-516140 or m-IgGκ BP-PE: sc-516141 (dilution range: 1:50-1:200) with UltraCruz® Mounting Medium: sc-24941 or UltraCruz® Hard-set Mounting Medium: sc-359850. 4) Immunohistochemistry: use m-IgGκ BP-HRP: sc-516102 with DAB, 50X: sc-24982 and Immunohistomount: sc-45086, or Organo/Limonene Mount: sc-45087.

## DATA



RWDD4A (C-3): sc-377462. Western blot analysis of RWDD4A expression in SH-SY5Y (A), PC-3 (B), SJRH30 (C), RPE-J (D), Neuro-2A (E) and NIH/3T3 (F) whole cell lysates.



RWDD4A (C-3): sc-377462. Immunoperoxidase staining of formalin fixed, paraffin-embedded human lower stomach tissue showing cytoplasmic staining of glandular cells.

## RESEARCH USE

For research use only, not for use in diagnostic procedures.

Alexa Fluor® is a trademark of Molecular Probes, Inc., Oregon, USA