

PUS1 (A-4): sc-390043

BACKGROUND

PUS1 (psuedouridine synthase 1) belongs to the tRNA pseudouridine synthase truA family. PUS1 functions in the conversion of uridine into pseudouridine after the nucleotide has been incorporated into RNA. It may have a functional role in tRNAs and is also thought to assist in the peptidyl transfer reaction of rRNAs. As a nucleus-resident protein, PUS1 forms a complex with RARG and the SRA1 RNA. PUS1 is widely expressed, with highest levels of expression in the brain and skeletal muscle tissues. Defects in PUS1 are a cause of myopathy with lactic acidosis and sideroblastic anemia (MLASA), also known as mitochondrial myopathy and sideroblastic anemia. MLASA is a rare autosomal recessive oxidative phosphorylation disorder specific to bone marrow and skeletal muscle. The deduced human PUS1 protein contains 348 amino acids and shares 92% sequence homology with mouse PUS1.

REFERENCES

1. Arluison, V., et al. 1998. Transfer RNA-pseudouridine synthetase PUS1 of *Saccharomyces cerevisiae* contains one atom of zinc essential for its native conformation and tRNA recognition. *Biochemistry* 37: 7268-7276.
2. Arluison, V., et al. 1999. RNA:pseudouridine synthetase PUS1 from *Saccharomyces cerevisiae*: oligomerization property and stoichiometry of the complex with yeast tRNA^{Phe}. *Biochimie* 81: 751-756.

CHROMOSOMAL LOCATION

Genetic locus: PUS1 (human) mapping to 12q24.33; Pus1 (mouse) mapping to 5 F.

SOURCE

PUS1 (A-4) is a mouse monoclonal antibody specific for an epitope mapping between amino acids 345-383 mapping near the C-terminus of PUS1 of human origin.

PRODUCT

Each vial contains 200 µg IgG_{2a} kappa light chain in 1.0 ml of PBS with < 0.1% sodium azide and 0.1% gelatin. Also available as TransCruz reagent for Gel Supershift and ChIP applications, sc-390043 X, 200 µg/0.1 ml.

PUS1 (A-4) is available conjugated to agarose (sc-390043 AC), 500 µg/0.25 ml agarose in 1 ml, for IP; to HRP (sc-390043 HRP), 200 µg/ml, for WB, IHC(P) and ELISA; to either phycoerythrin (sc-390043 PE), fluorescein (sc-390043 FITC), Alexa Fluor® 488 (sc-390043 AF488), Alexa Fluor® 546 (sc-390043 AF546), Alexa Fluor® 594 (sc-390043 AF594) or Alexa Fluor® 647 (sc-390043 AF647), 200 µg/ml, for WB (RGB), IF, IHC(P) and FCM; and to either Alexa Fluor® 680 (sc-390043 AF680) or Alexa Fluor® 790 (sc-390043 AF790), 200 µg/ml, for Near-Infrared (NIR) WB, IF and FCM.

Blocking peptide available for competition studies, sc-390043 P, (100 µg peptide in 0.5 ml PBS containing < 0.1% sodium azide and 0.2% stabilizer protein).

Alexa Fluor® is a trademark of Molecular Probes, Inc., Oregon, USA

RESEARCH USE

For research use only, not for use in diagnostic procedures.

APPLICATIONS

PUS1 (A-4) is recommended for detection of PUS1 of mouse, rat and human origin by Western Blotting (starting dilution 1:100, dilution range 1:100-1:1000), immunoprecipitation [1-2 µg per 100-500 µg of total protein (1 ml of cell lysate)], immunofluorescence (starting dilution 1:50, dilution range 1:50-1:500), immunohistochemistry (including paraffin-embedded sections) (starting dilution 1:50, dilution range 1:50-1:500) and solid phase ELISA (starting dilution 1:30, dilution range 1:30-1:3000).

Suitable for use as control antibody for PUS1 siRNA (h): sc-61417, PUS1 siRNA (m): sc-61418, PUS1 shRNA Plasmid (h): sc-61417-SH, PUS1 shRNA Plasmid (m): sc-61418-SH, PUS1 shRNA (h) Lentiviral Particles: sc-61417-V and PUS1 shRNA (m) Lentiviral Particles: sc-61418-V.

PUS1 (A-4) X TransCruz antibody is recommended for Gel Supershift and ChIP applications.

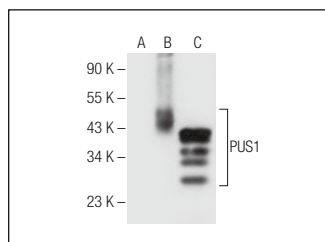
Molecular Weight of PUS1 isoform 1/2: 47/44 kDa.

Positive Controls: PUS1 (h): 293T Lysate: sc-171271 or HeLa whole cell lysate: sc-2200.

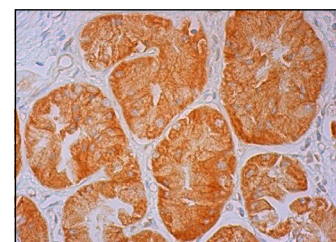
RECOMMENDED SUPPORT REAGENTS

To ensure optimal results, the following support reagents are recommended: 1) Western Blotting: use m-IgGκ BP-HRP: sc-516102 or m-IgGκ BP-HRP (Cruz Marker): sc-516102-CM (dilution range: 1:1000-1:10000), Cruz Marker™ Molecular Weight Standards: sc-2035, UltraCruz® Blocking Reagent: sc-516214 and Western Blotting Luminol Reagent: sc-2048. 2) Immunoprecipitation: use Protein A/G PLUS-Agarose: sc-2003 (0.5 ml agarose/2.0 ml). 3) Immunofluorescence: use m-IgGκ BP-FITC: sc-516140 or m-IgGκ BP-PE: sc-516141 (dilution range: 1:50-1:200) with UltraCruz® Mounting Medium: sc-24941 or UltraCruz® Hard-set Mounting Medium: sc-359850. 4) Immunohistochemistry: use m-IgGκ BP-HRP: sc-516102 with DAB, 50X: sc-24982 and Immunohistomount: sc-45086, or Organo/Limonene Mount: sc-45087.

DATA



PUS1 (A-4): sc-390043. Western blot analysis of PUS1 expression in non-transfected 293T: sc-117752 (A), human PUS1 transfected 293T: sc-171271 (B) and HeLa (C) whole cell lysates.



PUS1 (A-4): sc-390043. Immunoperoxidase staining of formalin fixed, paraffin-embedded human upper stomach tissue showing cytoplasmic staining of glandular cells.

STORAGE

Store at 4° C, **DO NOT FREEZE**. Stable for one year from the date of shipment. Non-hazardous. No MSDS required.