

cathepsin O (E-7): sc-390117

BACKGROUND

The cathepsin family of proteolytic enzymes contains several diverse classes of proteases. The cysteine protease class comprises cathepsins B, L, H, K, S, and O. The aspartyl protease class is composed of cathepsins D and E. cathepsin G is in the serine protease class. Most cathepsins are lysosomal and each is involved in cellular metabolism, participating in various events such as peptide biosynthesis and protein degradation. cathepsin O maintains the structural features characteristic of other cysteine proteinases including the active site cysteine residue that is involved in covalent intermediate formation during peptide hydrolysis. cathepsin O is an endoproteinase that may be involved in extracellular matrix degradation. cathepsin O is abundantly expressed in the ovary, kidney and placenta with lower levels found in thymus and skeletal muscle.

REFERENCES

1. Ishidoh, K., et al. 1987. Molecular cloning and sequencing of cDNA for rat cathepsin L. FEBS Lett. 223: 69-73.
2. Ishidoh, K., et al. 1987. Molecular cloning and sequencing of cDNA for rat cathepsin H. Homology in pro-peptide regions of cysteine proteases. FEBS Lett. 226: 33-37.
3. Redecker, B., et al. 1991. Molecular organization of the human cathepsin D gene. DNA Cell Biol. 10: 423-431.
4. Shi, G.P., et al. 1992. Molecular cloning and expression of human alveolar macrophage cathepsin S, an elastolytic cysteine protease. J. Biol. Chem. 267: 7258-7262.
5. Heusel, J.W., et al. 1993. Molecular cloning, chromosomal location, and tissue-specific expression of the murine cathepsin G gene. Blood 81: 1614-1623.

CHROMOSOMAL LOCATION

Genetic locus: CTSO (human) mapping to 4q32.1.

SOURCE

cathepsin O (E-7) is a mouse monoclonal antibody raised against amino acids 13-321 mapping at the C-terminus of cathepsin O of human origin.

PRODUCT

Each vial contains 200 µg IgG_{2a} kappa light chain in 1.0 ml of PBS with < 0.1% sodium azide and 0.1% gelatin.

cathepsin O (E-7) is available conjugated to agarose (sc-390117 AC), 500 µg/0.25 ml agarose in 1 ml, for IP; to HRP (sc-390117 HRP), 200 µg/ml, for WB, IHC(P) and ELISA; to either phycoerythrin (sc-390117 PE), fluorescein (sc-390117 FITC), Alexa Fluor® 488 (sc-390117 AF488), Alexa Fluor® 546 (sc-390117 AF546), Alexa Fluor® 594 (sc-390117 AF594) or Alexa Fluor® 647 (sc-390117 AF647), 200 µg/ml, for WB (RGB), IF, IHC(P) and FCM; and to either Alexa Fluor® 680 (sc-390117 AF680) or Alexa Fluor® 790 (sc-390117 AF790), 200 µg/ml, for Near-Infrared (NIR) WB, IF and FCM.

Alexa Fluor® is a trademark of Molecular Probes, Inc., Oregon, USA

APPLICATIONS

cathepsin O (E-7) is recommended for detection of cathepsin O of human origin by Western Blotting (starting dilution 1:100, dilution range 1:100-1:1000), immunoprecipitation [1-2 µg per 100-500 µg of total protein (1 ml of cell lysate)], immunofluorescence (starting dilution 1:50, dilution range 1:50-1:500) and solid phase ELISA (starting dilution 1:30, dilution range 1:30-1:3000).

Suitable for use as control antibody for cathepsin O siRNA (h): sc-41479, cathepsin O shRNA Plasmid (h): sc-41479-SH and cathepsin O shRNA (h) Lentiviral Particles: sc-41479-V.

Molecular Weight of cathepsin O: 36 kDa.

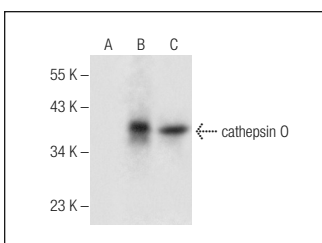
Positive Controls: cathepsin O (h): 293T Lysate: sc-115992 or Caki-1 cell lysate: sc-2224.

RECOMMENDED SUPPORT REAGENTS

To ensure optimal results, the following support reagents are recommended:

- 1) Western Blotting: use m-IgGκ BP-HRP: sc-516102 or m-IgGκ BP-HRP (Cruz Marker): sc-516102-CM (dilution range: 1:1000-1:10000), Cruz Marker™ Molecular Weight Standards: sc-2035, UltraCruz® Blocking Reagent: sc-516214 and Western Blotting Luminol Reagent: sc-2048.
- 2) Immunoprecipitation: use Protein A/G PLUS-Agarose: sc-2003 (0.5 ml agarose/2.0 ml).
- 3) Immunofluorescence: use m-IgGκ BP-FITC: sc-516140 or m-IgGκ BP-PE: sc-516141 (dilution range: 1:50-1:200) with UltraCruz® Mounting Medium: sc-24941 or UltraCruz® Hard-set Mounting Medium: sc-359850.

DATA



cathepsin O (E-7): sc-390117. Western blot analysis of cathepsin O expression in non-transfected 293T: sc-117752 (A), human cathepsin O transfected 293T: sc-115992 (B) and Caki-1 (C) whole cell lysates.

STORAGE

Store at 4° C, **DO NOT FREEZE**. Stable for one year from the date of shipment. Non-hazardous. No MSDS required.

RESEARCH USE

For research use only, not for use in diagnostic procedures.

PROTOCOLS

See our web site at www.scbt.com for detailed protocols and support products.