

# SR-1E (D-9): sc-390170

## BACKGROUND

The members of the G protein-coupled receptor family are distinguished by their slow transmitting response to ligand binding. These seven transmembrane proteins include the adrenergic, serotonin and dopamine receptors. The effect of the signaling molecule can be excitatory or inhibitory depending on the type of receptor to which it binds.  $\beta$ -adrenergic bound to adrenaline activates adenylyl cyclase, while  $\alpha_2$ -adrenergic receptor bound to adrenaline inhibits adenylyl cyclase. Like the  $\alpha_2$ -adrenergic receptor, serotonin receptor functions are also mediated by G proteins that inhibit the activity of adenylyl cyclase. The serotonin receptors have been classified into several categories, designated SR-1-7 (5HT1-7). Subtypes within the SR-1 group include SR-1A, -1B, -1D, -1E and -1F.

## REFERENCES

1. Hausdorff, W.P., et al. 1990. Two kinases mediate agonist-dependent phosphorylation and desensitization of the  $\beta_2$ -adrenergic receptor. *Symp. Soc. Exp. Biol.* 44: 225-240.
2. Cotecchia, S., et al. 1990. Multiple second messenger pathways of  $\alpha$ -adrenergic receptor subtypes expressed in eukaryotic cells. *J. Biol. Chem.* 265: 63-69.
3. Bertin, B., et al. 1992. Functional expression of the human serotonin 5-HT1A receptor in *Escherichia coli*. Ligand binding properties and interaction with recombinant G protein  $\alpha$ -subunits. *J. Biol. Chem.* 267: 8200-8206.
4. Levy, F.O., et al. 1992. Molecular cloning of a human gene (S31) encoding a novel serotonin receptor mediating inhibition of adenylyl cyclase. *FEBS Lett.* 296: 201-206.
5. Barak, L.S., et al. 1995. The conserved seven-transmembrane sequence NP(X)2,3Y of the G protein-coupled receptor superfamily regulates multiple properties of the  $\beta_2$ -adrenergic receptor. *Biochemistry* 34: 15407-15414.

## CHROMOSOMAL LOCATION

Genetic locus: HTR1E (human) mapping to 6q14.3.

## SOURCE

SR-1E (D-9) is a mouse monoclonal antibody raised against amino acids 201-280 of SR-1E of human origin.

## PRODUCT

Each vial contains 200  $\mu$ g IgG<sub>1</sub> kappa light chain in 1.0 ml of PBS with < 0.1% sodium azide and 0.1% gelatin.

SR-1E (D-9) is available conjugated to agarose (sc-390170 AC), 500  $\mu$ g/0.25 ml agarose in 1 ml, for IP; to HRP (sc-390170 HRP), 200  $\mu$ g/ml, for WB, IHC(P) and ELISA; to either phycoerythrin (sc-390170 PE), fluorescein (sc-390170 FITC), Alexa Fluor<sup>®</sup> 488 (sc-390170 AF488), Alexa Fluor<sup>®</sup> 546 (sc-390170 AF546), Alexa Fluor<sup>®</sup> 594 (sc-390170 AF594) or Alexa Fluor<sup>®</sup> 647 (sc-390170 AF647), 200  $\mu$ g/ml, for WB (RGB), IF, IHC(P) and FCM; and to either Alexa Fluor<sup>®</sup> 680 (sc-390170 AF680) or Alexa Fluor<sup>®</sup> 790 (sc-390170 AF790), 200  $\mu$ g/ml, for Near-Infrared (NIR) WB, IF and FCM.

Alexa Fluor<sup>®</sup> is a trademark of Molecular Probes, Inc., Oregon, USA

## APPLICATIONS

SR-1E (D-9) is recommended for detection of serotonin 1E receptor (5-HT1E) of human origin by Western Blotting (starting dilution 1:100, dilution range 1:100-1:1000), immunoprecipitation [1-2  $\mu$ g per 100-500  $\mu$ g of total protein (1 ml of cell lysate)], immunofluorescence (starting dilution 1:50, dilution range 1:50-1:500) and solid phase ELISA (starting dilution 1:30, dilution range 1:30-1:3000).

Suitable for use as control antibody for SR-1E siRNA (h): sc-42227, SR-1E shRNA Plasmid (h): sc-42227-SH and SR-1E shRNA (h) Lentiviral Particles: sc-42227-V.

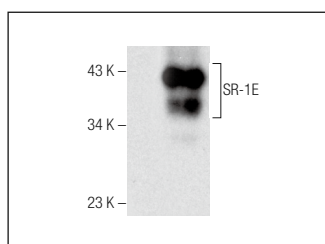
Molecular Weight of SR-1E: 42 kDa.

Positive Controls: human SR-1E transfected HEK293T whole cell lysate.

## RECOMMENDED SUPPORT REAGENTS

To ensure optimal results, the following support reagents are recommended: 1) Western Blotting: use m-IgG $\kappa$  BP-HRP: sc-516102 or m-IgG $\kappa$  BP-HRP (Cruz Marker): sc-516102-CM (dilution range: 1:1000-1:10000), Cruz Marker<sup>™</sup> Molecular Weight Standards: sc-2035, UltraCruz<sup>®</sup> Blocking Reagent: sc-516214 and Western Blotting Luminol Reagent: sc-2048. 2) Immunoprecipitation: use Protein A/G PLUS-Agarose: sc-2003 (0.5 ml agarose/2.0 ml). 3) Immunofluorescence: use m-IgG $\kappa$  BP-FITC: sc-516140 or m-IgG $\kappa$  BP-PE: sc-516141 (dilution range: 1:50-1:200) with UltraCruz<sup>®</sup> Mounting Medium: sc-24941 or UltraCruz<sup>®</sup> Hard-set Mounting Medium: sc-359850.

## DATA



SR-1E (D-9): sc-390170. Western blot analysis of SR-1E expression in non-transfected (A) and human SR-1E transfected (B) HEK293T whole cell lysates.

## STORAGE

Store at 4° C, \*\*DO NOT FREEZE\*\*. Stable for one year from the date of shipment. Non-hazardous. No MSDS required.

## RESEARCH USE

For research use only, not for use in diagnostic procedures.

## PROTOCOLS

See our web site at [www.scbt.com](http://www.scbt.com) for detailed protocols and support products.