

# MFAP3L (C-10): sc-390228

## BACKGROUND

MFAP3L (microfibrillar-associated protein 3-like), also known as HSD39 or testis development protein NYD-SP9, is a 409 amino acid single-pass type I cell membrane protein that contains one Ig-like (immunoglobulin-like) domain. Found primarily in testis, MFAP3L is encoded by a gene that is located on chromosome 4 and is expressed as three isoforms due to alternative splicing events. Representing approximately 6% of the human genome, chromosome 4 contains nearly 900 genes, one of which is the Huntingtin gene, which is found to encode an expanded glutamine tract in cases of Huntington's disease. FGFR-3 is also encoded on chromosome 4 and has been associated with thanatophoric dwarfism, achondroplasia, Muenke syndrome and bladder cancer. Chromosome 4 is also tied to Ellis-van Creveld syndrome, methylmalonic acidemia and polycystic kidney disease.

## REFERENCES

- Hillier, L.W., et al. 2005. Generation and annotation of the DNA sequences of human chromosomes 2 and 4. *Nature* 434: 724-731.
- Cowan, C.M. and Raymond, L.A. 2006. Selective neuronal degeneration in Huntington's disease. *Curr. Top. Dev. Biol.* 75: 25-71.
- Chandler, R.J., et al. 2007. Metabolic phenotype of methylmalonic acidemia in mice and humans: the role of skeletal muscle. *BMC Med. Genet.* 8: 64.
- Cunningham, M.L., et al. 2007. Syndromic craniosynostosis: from history to hydrogen bonds. *Orthod. Craniofac. Res.* 10: 67-81.
- Versteegh, F.G., et al. 2007. Growth hormone analysis and treatment in Ellis-van Creveld syndrome. *Am. J. Med. Genet. A* 143A: 2113-2121.
- Doherty, E.S., et al. 2007. Muenke syndrome (FGFR3-related craniosynostosis): expansion of the phenotype and review of the literature. *Am. J. Med. Genet. A* 143A: 3204-3215.

## CHROMOSOMAL LOCATION

Genetic locus: MFAP3L (human) mapping to 4q33; Mfap3l (mouse) mapping to 8 B3.1.

## SOURCE

MFAP3L (C-10) is a mouse monoclonal antibody raised against amino acids 246-409 mapping at the C-terminus of MFAP3L of human origin.

## PRODUCT

Each vial contains 200 µg IgG<sub>1</sub> kappa light chain in 1.0 ml of PBS with < 0.1% sodium azide and 0.1% gelatin.

MFAP3L (C-10) is available conjugated to agarose (sc-390228 AC), 500 µg/0.25 ml agarose in 1 ml, for IP; to HRP (sc-390228 HRP), 200 µg/ml, for WB, IHC(P) and ELISA; to either phycoerythrin (sc-390228 PE), fluorescein (sc-390228 FITC), Alexa Fluor® 488 (sc-390228 AF488), Alexa Fluor® 546 (sc-390228 AF546), Alexa Fluor® 594 (sc-390228 AF594) or Alexa Fluor® 647 (sc-390228 AF647), 200 µg/ml, for WB (RGB), IF, IHC(P) and FCM; and to either Alexa Fluor® 680 (sc-390228 AF680) or Alexa Fluor® 790 (sc-390228 AF790), 200 µg/ml, for Near-Infrared (NIR) WB, IF and FCM.

Alexa Fluor® is a trademark of Molecular Probes, Inc., Oregon, USA

## APPLICATIONS

MFAP3L (C-10) is recommended for detection of MFAP3L isoforms 1 and 2 of mouse, rat and human origin by Western Blotting (starting dilution 1:100, dilution range 1:100-1:1000), immunoprecipitation [1-2 µg per 100-500 µg of total protein (1 ml of cell lysate)], immunofluorescence (starting dilution 1:50, dilution range 1:50-1:500) and solid phase ELISA (starting dilution 1:30, dilution range 1:30-1:3000).

Suitable for use as control antibody for MFAP3L siRNA (h): sc-88992, MFAP3L siRNA (m): sc-149402, MFAP3L shRNA Plasmid (h): sc-88992-SH, MFAP3L shRNA Plasmid (m): sc-149402-SH, MFAP3L shRNA (h) Lentiviral Particles: sc-88992-V and MFAP3L shRNA (m) Lentiviral Particles: sc-149402-V.

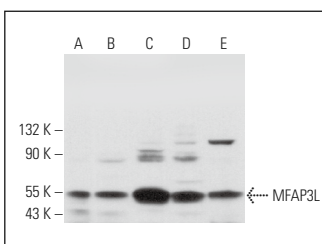
Molecular Weight of MFAP3L: 45 kDa.

Positive Controls: human testis extract: sc-363781, HeLa whole cell lysate: sc-2200 or NTERA-2 cl.D1 whole cell lysate: sc-364181.

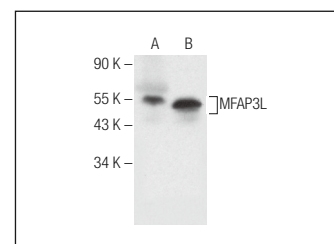
## RECOMMENDED SUPPORT REAGENTS

To ensure optimal results, the following support reagents are recommended: 1) Western Blotting: use m-IgGκ BP-HRP: sc-516102 or m-IgGκ BP-HRP (Cruz Marker): sc-516102-CM (dilution range: 1:1000-1:10000), Cruz Marker™ Molecular Weight Standards: sc-2035, UltraCruz® Blocking Reagent: sc-516214 and Western Blotting Luminol Reagent: sc-2048. 2) Immunoprecipitation: use Protein A/G PLUS-Agarose: sc-2003 (0.5 ml agarose/2.0 ml). 3) Immunofluorescence: use m-IgGκ BP-FITC: sc-516140 or m-IgGκ BP-PE: sc-516141 (dilution range: 1:50-1:200) with UltraCruz® Mounting Medium: sc-24941 or UltraCruz® Hard-set Mounting Medium: sc-359850.

## DATA



MFAP3L (C-10): sc-390228. Western blot analysis of MFAP3L expression in NTERA-2 cl.D1 (A), Jurkat (B), HeLa (C), NIH/3T3 (D) and C2C12 (E) whole cell lysates.



MFAP3L (C-10): sc-390228. Western blot analysis of MFAP3L expression in human testis tissue extract (A) and NTERA-2 cl.D1 whole cell lysate (B).

## STORAGE

Store at 4° C, \*\*DO NOT FREEZE\*\*. Stable for one year from the date of shipment. Non-hazardous. No MSDS required.

## RESEARCH USE

For research use only, not for use in diagnostic procedures.

## PROTOCOLS

See our web site at [www.scbt.com](http://www.scbt.com) for detailed protocols and support products.