

EMID1 (G-12): sc-390288



The Power to Question

BACKGROUND

EMID1 (EMI domain containing 1) is a 441 amino acid secreted protein that contains one collagen-like domain and one EMI domain. The EMI domain contains seven conserved cysteines that may mediate dimerization. The Emid1 mouse gene contains 15 exons and spans 54 kb. Existing as three alternatively spliced isoforms, the EMID1 gene is conserved in chimpanzee, canine, bovine, mouse, rat, chicken and zebrafish, and maps to human chromosome 22q12.2. Chromosome 22 contains over 500 genes and about 49 million bases. Being the second smallest human chromosome 22, contains a surprising variety of interesting genes. Phelan-McDermid syndrome, neurofibromatosis type 2 and autism are associated with chromosome 22. A schizophrenia susceptibility locus has been identified on chromosome 22 and studies show that 22q12.2 deletion symptoms include a high incidence of schizophrenia.

REFERENCES

- Gilbert, F. 1998. Disease genes and chromosomes: disease maps of the human genome. *Chromosome 22. Genet. Test.* 2: 89-97.
- Schwab, S.G. and Wildenauer, D.B. 1999. Chromosome 22 workshop report. *Am. J. Med. Genet.* 88: 276-278.
- Dunham, I., et al. 1999. The DNA sequence of human chromosome 22. *Nature* 402: 489-495.
- Leimeister, C., et al. 2002. Developmental expression and biochemical characterization of Emu family members. *Dev. Biol.* 249: 204-218.

CHROMOSOMAL LOCATION

Genetic locus: EMID1 (human) mapping to 22q12.2; Emid1 (mouse) mapping to 11 A1.

SOURCE

EMID1 (G-12) is a mouse monoclonal antibody specific for an epitope mapping between amino acids 383-417 within an internal region of EMID1 of human origin.

PRODUCT

Each vial contains 200 µg IgG₁ kappa light chain in 1.0 ml of PBS with < 0.1% sodium azide and 0.1% gelatin.

EMID1 (G-12) is available conjugated to agarose (sc-390288 AC), 500 µg/0.25 ml agarose in 1 ml, for IP; to HRP (sc-390288 HRP), 200 µg/ml, for WB, IHC(P) and ELISA; to either phycoerythrin (sc-390288 PE), fluorescein (sc-390288 FITC), Alexa Fluor® 488 (sc-390288 AF488), Alexa Fluor® 546 (sc-390288 AF546), Alexa Fluor® 594 (sc-390288 AF594) or Alexa Fluor® 647 (sc-390288 AF647), 200 µg/ml, for WB (RGB), IF, IHC(P) and FCM; and to either Alexa Fluor® 680 (sc-390288 AF680) or Alexa Fluor® 790 (sc-390288 AF790), 200 µg/ml, for Near-Infrared (NIR) WB, IF and FCM.

Blocking peptide available for competition studies, sc-390288 P, (100 µg peptide in 0.5 ml PBS containing < 0.1% sodium azide and 0.2% stabilizer protein).

Alexa Fluor® is a trademark of Molecular Probes, Inc., Oregon, USA

APPLICATIONS

EMID1 (G-12) is recommended for detection of EMID1 of mouse and human origin by Western Blotting (starting dilution 1:100, dilution range 1:100-1:1000), immunoprecipitation [1-2 µg per 100-500 µg of total protein (1 ml of cell lysate)], immunofluorescence (starting dilution 1:50, dilution range 1:50-1:500) and solid phase ELISA (starting dilution 1:30, dilution range 1:30-1:3000).

Suitable for use as control antibody for EMID1 siRNA (h): sc-77270, EMID1 siRNA (m): sc-144640, EMID1 shRNA Plasmid (h): sc-77270-SH, EMID1 shRNA Plasmid (m): sc-144640-SH, EMID1 shRNA (h) Lentiviral Particles: sc-77270-V and EMID1 shRNA (m) Lentiviral Particles: sc-144640-V.

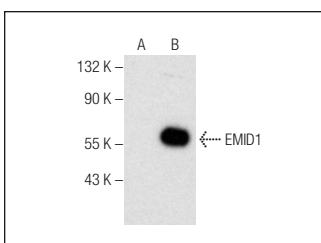
Molecular Weight of EMID1: 45 kDa.

Positive Controls: EMID1 (h): 293T Lysate: sc-115983.

RECOMMENDED SUPPORT REAGENTS

To ensure optimal results, the following support reagents are recommended: 1) Western Blotting: use m-IgGκ BP-HRP: sc-516102 or m-IgGκ BP-HRP (Cruz Marker): sc-516102-CM (dilution range: 1:1000-1:10000), Cruz Marker™ Molecular Weight Standards: sc-2035, UltraCruz® Blocking Reagent: sc-516214 and Western Blotting Luminol Reagent: sc-2048. 2) Immunoprecipitation: use Protein A/G PLUS-Agarose: sc-2003 (0.5 ml agarose/2.0 ml). 3) Immunofluorescence: use m-IgGκ BP-FITC: sc-516140 or m-IgGκ BP-PE: sc-516141 (dilution range: 1:50-1:200) with UltraCruz® Mounting Medium: sc-24941 or UltraCruz® Hard-set Mounting Medium: sc-359850.

DATA



EMID1 (G-12): sc-390288. Western blot analysis of EMID1 expression in non-transfected: sc-117752 (A) and human EMID1 transfected: sc-115983 (B) 293T whole cell lysates.

STORAGE

Store at 4° C, **DO NOT FREEZE**. Stable for one year from the date of shipment. Non-hazardous. No MSDS required.

RESEARCH USE

For research use only, not for use in diagnostic procedures.

PROTOCOLS

See our web site at www.scbt.com for detailed protocols and support products.