

PI-9 (F-12): sc-390561

BACKGROUND

Serine proteinase inhibitors (serpins) function as regulators of serine proteinase activity in a variety of physiological processes. Proteinase inhibitor-9 (PI-9, also designated cytoplasmic antiproteinase 3, or CAP3) is a member of the ovalbumin family of serpins that is expressed in placenta, lung and cytotoxic lymphocytes. PI-9 is a potent inhibitor of granzyme B and of granzyme B-mediated apoptosis, and is also an inhibitor of caspase-1 and, to a lesser extent, caspase-4 and caspase-8. Because granzyme B promotes DNA degradation and rapidly translocates to the nucleus to bind to a nuclear component, PI-9 is present in the nuclei of human cytotoxic cells, endothelial cells and epithelial cells. PI-9 is exported from nuclei via a leptomycin B-sensitive pathway, suggesting that the nucleocytoplasmic distribution of PI-9 involves a nonconventional nuclear import pathway and the export factor CRM1. Estrogen rapidly and strongly induces PI-9, which is an estrogen-regulated human gene. PI-9 expression is also upregulated in response to inflammatory stimuli. This upregulation protects cells from apoptosis induced by endogenously expressed or released granzyme B, particularly during target cell killing. In addition, PI-9 is expressed in a variety of human and murine tumors.

REFERENCES

- Dahlen, J.R., et al. 1997. Human proteinase inhibitor 9 (PI9) is a potent inhibitor of subtilisin A. *Biochem. Biophys. Res. Commun.* 238: 329-333.
- Sun, J., et al. 1997. A new family of 10 murine ovalbumin serpins includes two homologs of proteinase inhibitor 8 and two homologs of the granzyme B inhibitor (proteinase inhibitor 9). *J. Biol. Chem.* 272: 15434-15441.
- Sun, J., et al. 1998. A serpin gene cluster on human chromosome 6p25 contains PI6, PI9 an ELANH2 which have a common structure almost identical to the 18q21 ovalbumin serpin genes. *Cytogenet. Cell Genet.* 82: 273-277.
- Dahlen, J.R., et al. 1999. Inhibition of neutrophil elastase by recombinant human proteinase inhibitor 9. *Biochem. Biophys. Acta* 1451: 233-241.
- Anand, R.R., et al. 1999. Caspase-1 (interleukin-1 β -converting enzyme) is inhibited by the human serpin analogue proteinase inhibitor 9. *Biochem. J.* 342: 655-665.
- Kanamori, H., et al. 2000. Proteinase inhibitor 9, an inhibitor of granzyme B-mediated apoptosis, is a primary estrogen-inducible gene in human liver cells. *J. Biol. Chem.* 275: 5867-5873.
- Bird, C.H., et al. 2001. Nucleocytoplasmic distribution of the ovalbumin serpin PI-9 requires a nonconventional nuclear import pathway and the export factor Crm1. *Mol. Cell. Biol.* 21: 5396-5407.

CHROMOSOMAL LOCATION

Genetic locus: SERPINB9 (human) mapping to 6p25.2; Serpinb9 (mouse) mapping to 13 A3.3.

SOURCE

PI-9 (F-12) is a mouse monoclonal antibody raised against amino acids 77-320 mapping within an internal region of PI-9 of mouse origin.

PRODUCT

Each vial contains 200 μ g IgG_{2a} kappa light chain in 1.0 ml of PBS with < 0.1% sodium azide and 0.1% gelatin.

APPLICATIONS

PI-9 (F-12) is recommended for detection of PI-9 of mouse, rat and human origin by Western Blotting (starting dilution 1:100, dilution range 1:100-1:1000), immunoprecipitation [1-2 μ g per 100-500 μ g of total protein (1 ml of cell lysate)], immunofluorescence (starting dilution 1:50, dilution range 1:50-1:500) and solid phase ELISA (starting dilution 1:30, dilution range 1:30-1:3000).

Suitable for use as control antibody for PI-9 siRNA (h): sc-40949, PI-9 siRNA (m): sc-152245, PI-9 shRNA Plasmid (h): sc-40949-SH, PI-9 shRNA Plasmid (m): sc-152245-SH, PI-9 shRNA (h) Lentiviral Particles: sc-40949-V and PI-9 shRNA (m) Lentiviral Particles: sc-152245-V.

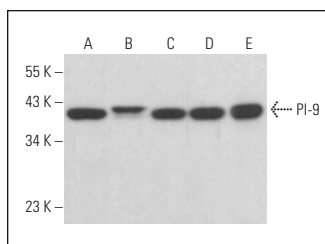
Molecular Weight of PI-9: 42 kDa.

Positive Controls: BJAB whole cell lysate: sc-2207, PC-12 cell lysate: sc-2250 or RPE-J cell lysate: sc-24771.

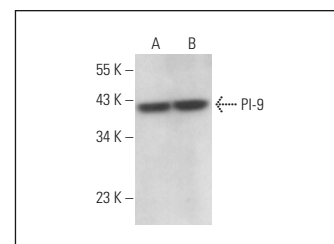
RECOMMENDED SUPPORT REAGENTS

To ensure optimal results, the following support reagents are recommended: 1) Western Blotting: use m-IgG κ BP-HRP: sc-516102 or m-IgG κ BP-HRP (Cruz Marker): sc-516102-CM (dilution range: 1:1000-1:10000), Cruz Marker[™] Molecular Weight Standards: sc-2035, UltraCruz[®] Blocking Reagent: sc-516214 and Western Blotting Luminol Reagent: sc-2048. 2) Immunoprecipitation: use Protein A/G PLUS-Agarose: sc-2003 (0.5 ml agarose/2.0 ml). 3) Immunofluorescence: use m-IgG κ BP-FITC: sc-516140 or m-IgG κ BP-PE: sc-516141 (dilution range: 1:50-1:200) with UltraCruz[®] Mounting Medium: sc-24941 or UltraCruz[®] Hard-set Mounting Medium: sc-359850.

DATA



PI-9 (F-12): sc-390561. Western blot analysis of PI-9 expression in Ramos (A), WEHI-231 (B), BJAB (C), Y79 (D) and NAMALWA (E) whole cell lysates.



PI-9 (F-12): sc-390561. Western blot analysis of PI-9 expression in PC-12 (A) and RPE-J (B) whole cell lysates.

STORAGE

Store at 4[°] C, **DO NOT FREEZE**. Stable for one year from the date of shipment. Non-hazardous. No MSDS required.

RESEARCH USE

For research use only, not for use in diagnostic procedures.