

L-Selectin (B-8): sc-390756

BACKGROUND

Selectins, also designated CD62 antigens, comprise a family of carbohydrate-binding proteins involved in mediating cellular interactions with leukocytes. L-Selectin (also designated LECAM-1 or CD62L) is expressed on the majority of B and naive T cells and on most monocytes, neutrophils and eosinophils. L-Selectin interacts with specific carbohydrates expressed by activated endothelial cells. P-Selectin (also designated GMP-140 or CD62P), expressed on activated platelets and endothelial cells, and E-Selectin (also designated ELMA-1 or CD62E), expressed on endothelial cells, exhibit overlapping ligand specificities. Both recognize sialyl-Lex as a ligand and bind to specific carbohydrates on neutrophils and monocytes.

CHROMOSOMAL LOCATION

Genetic locus: SELL (human) mapping to 1q24.2; Sell (mouse) mapping to 1 H2.2.

SOURCE

L-Selectin (B-8) is a mouse monoclonal antibody raised against amino acids 224-372 mapping at the C-terminus of L-Selectin of human origin.

PRODUCT

Each vial contains 200 µg IgG₁ kappa light chain in 1.0 ml of PBS with < 0.1% sodium azide and 0.1% gelatin.

L-Selectin (B-8) is available conjugated to agarose (sc-390756 AC), 500 µg/0.25 ml agarose in 1 ml, for IP; to HRP (sc-390756 HRP), 200 µg/ml, for WB, IHC(P) and ELISA; to either phycoerythrin (sc-390756 PE), fluorescein (sc-390756 FITC), Alexa Fluor® 488 (sc-390756 AF488), Alexa Fluor® 546 (sc-390756 AF546), Alexa Fluor® 594 (sc-390756 AF594) or Alexa Fluor® 647 (sc-390756 AF647), 200 µg/ml, for WB (RGB), IF, IHC(P) and FCM; and to either Alexa Fluor® 680 (sc-390756 AF680) or Alexa Fluor® 790 (sc-390756 AF790), 200 µg/ml, for Near-Infrared (NIR) WB, IF and FCM.

Alexa Fluor® is a trademark of Molecular Probes, Inc., Oregon, USA

APPLICATIONS

L-Selectin (B-8) is recommended for detection of L-Selectin of mouse, rat and human origin by Western Blotting (starting dilution 1:100, dilution range 1:100-1:1000), immunoprecipitation [1-2 µg per 100-500 µg of total protein (1 ml of cell lysate)], immunofluorescence (starting dilution 1:50, dilution range 1:50-1:500), immunohistochemistry (including paraffin-embedded sections) (starting dilution 1:50, dilution range 1:50-1:500) and solid phase ELISA (starting dilution 1:30, dilution range 1:30-1:3000).

Suitable for use as control antibody for L-Selectin siRNA (h): sc-35770, L-Selectin siRNA (m): sc-35771, L-Selectin shRNA Plasmid (h): sc-35770-SH, L-Selectin shRNA Plasmid (m): sc-35771-SH, L-Selectin shRNA (h) Lentiviral Particles: sc-35770-V and L-Selectin shRNA (m) Lentiviral Particles: sc-35771-V.

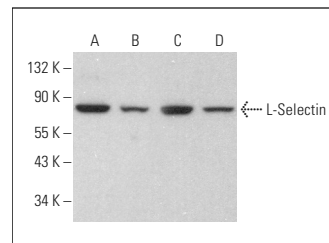
Molecular Weight of L-Selectin: 81 kDa.

Positive Controls: CCRF-CEM cell lysate: sc-2225, MEG-01 cell lysate: sc-2283 or K-562 whole cell lysate: sc-2203.

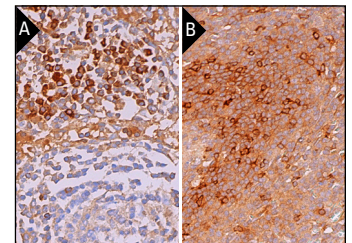
RECOMMENDED SUPPORT REAGENTS

To ensure optimal results, the following support reagents are recommended: 1) Western Blotting: use m-IgGκ BP-HRP: sc-516102 or m-IgGκ BP-HRP (Cruz Marker): sc-516102-CM (dilution range: 1:1000-1:10000), Cruz Marker™ Molecular Weight Standards: sc-2035, UltraCruz® Blocking Reagent: sc-516214 and Western Blotting Luminol Reagent: sc-2048. 2) Immunoprecipitation: use Protein A/G PLUS-Agarose: sc-2003 (0.5 ml agarose/2.0 ml). 3) Immunofluorescence: use m-IgGκ BP-FITC: sc-516140 or m-IgGκ BP-PE: sc-516141 (dilution range: 1:50-1:200) with UltraCruz® Mounting Medium: sc-24941 or UltraCruz® Hard-set Mounting Medium: sc-359850. 4) Immunohistochemistry: use m-IgGκ BP-HRP: sc-516102 with DAB, 50X: sc-24982 and Immunohistomount: sc-45086, or Organo/Limonene Mount: sc-45087.

DATA



L-Selectin (B-8): sc-390756. Western blot analysis of L-Selectin expression in CCRF-CEM (A), MEG-01 (B), K-562 (C) and TF-1 (D) whole cell lysates.



L-Selectin (B-8): sc-390756. Immunoperoxidase staining of formalin fixed, paraffin-embedded human lymph node tissue showing membrane and cytoplasmic staining of cells in non-germinal center (A). Immunoperoxidase staining of formalin fixed, paraffin-embedded human spleen tissue showing membrane and cytoplasmic staining of cells in white pulp and cells in red pulp (B).

SELECT PRODUCT CITATIONS

- Mahanonda, R., et al. 2016. Human memory B cells in healthy gingiva, gingivitis, and periodontitis. *J. Immunol.* 197: 715-725.

STORAGE

Store at 4° C, **DO NOT FREEZE**. Stable for one year from the date of shipment. Non-hazardous. No MSDS required.

RESEARCH USE

For research use only, not for use in diagnostic procedures.

PROTOCOLS

See our web site at www.scbt.com for detailed protocols and support products.