

CHP1 (B-6): sc-390834



The Power to Question

BACKGROUND

Human CHP1 and the *C. elegans* homolog Chp are CHORD domain-containing proteins that are largely related, and their corresponding genes are evolutionarily conserved among various eukaryotic organisms. The unique CHORD domain is characterized as 60 amino acids in length, and contains 6 highly conserved cysteine residues, 2 histidine residues and a distinct Zn²⁺-binding domain. CHP1 and the other metazoan orthologs have tandem CHORD domains that are located at both the N- and C- termini. These proteins are implicated in germline development and embryogenesis as mutations affecting the CHORD domain of the nematode protein Chp result in semisterility and embryonic lethality.

REFERENCES

- Freialdenhoven, A., et al. 1994. Nar-1 and Nar-2, two loci required for Mla12-specified race-specific resistance to powdery mildew in barley. *Plant Cell* 6: 983-994.
- Doe, C.L., et al. 1998. The fission yeast chromo domain encoding gene CHP1⁺ is required for chromosome segregation and shows a genetic interaction with α -Tubulin. *Nucleic Acids Res.* 26: 4222-4229.
- van der Biezen, E.A. and Jones, J.D. 1998. The NB-ARC domain: a novel signalling motif shared by plant resistance gene products and regulators of cell death in animals. *Curr. Biol.* 8: 226-227.
- Vaux, D.L. and Korsmeyer, S.J. 1999. Cell death in development. *Cell* 96: 245-254.
- Shirasu, K., et al. 1999. A novel class of eukaryotic zinc-binding proteins is required for disease resistance signaling in barley and development in *C. elegans*. *Cell* 99: 355-366.

CHROMOSOMAL LOCATION

Genetic locus: CHORDC1 (human) mapping to 11q14.3; Chordc1 (mouse) mapping to 9 A2.

SOURCE

CHP1 (B-6) is a mouse monoclonal antibody raised against amino acids 29-328 mapping within an internal region of CHP1 of human origin.

PRODUCT

Each vial contains 200 μ g IgG_{2b} kappa light chain in 1.0 ml of PBS with < 0.1% sodium azide and 0.1% gelatin.

CHP1 (B-6) is available conjugated to agarose (sc-390834 AC), 500 μ g/0.25 ml agarose in 1 ml, for IP; to HRP (sc-390834 HRP), 200 μ g/ml, for WB, IHC(P) and ELISA; to either phycoerythrin (sc-390834 PE), fluorescein (sc-390834 FITC), Alexa Fluor[®] 488 (sc-390834 AF488), Alexa Fluor[®] 546 (sc-390834 AF546), Alexa Fluor[®] 594 (sc-390834 AF594) or Alexa Fluor[®] 647 (sc-390834 AF647), 200 μ g/ml, for WB (RGB), IF, IHC(P) and FCM; and to either Alexa Fluor[®] 680 (sc-390834 AF680) or Alexa Fluor[®] 790 (sc-390834 AF790), 200 μ g/ml, for Near-Infrared (NIR) WB, IF and FCM.

Alexa Fluor[®] is a trademark of Molecular Probes, Inc., Oregon, USA

APPLICATIONS

CHP1 (B-6) is recommended for detection of CHP1 of mouse, rat and human origin by Western Blotting (starting dilution 1:100, dilution range 1:100-1:1000), immunoprecipitation [1-2 μ g per 100-500 μ g of total protein (1 ml of cell lysate)], immunofluorescence (starting dilution 1:50, dilution range 1:50-1:500) and solid phase ELISA (starting dilution 1:30, dilution range 1:30-1:3000).

Suitable for use as control antibody for CHP1 siRNA (h): sc-106753, CHP1 siRNA (m): sc-142331, CHP1 shRNA Plasmid (h): sc-106753-SH, CHP1 shRNA Plasmid (m): sc-142331-SH, CHP1 shRNA (h) Lentiviral Particles: sc-106753-V and CHP1 shRNA (m) Lentiviral Particles: sc-142331-V.

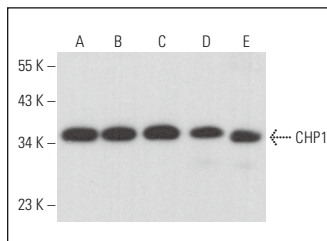
Molecular Weight of CHP1: 37 kDa.

Positive Controls: CHP1 (m): 293T Lysate: sc-119247, human heart extract: sc-363763 or human liver extract: sc-363766.

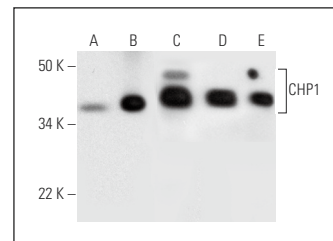
RECOMMENDED SUPPORT REAGENTS

To ensure optimal results, the following support reagents are recommended: 1) Western Blotting: use m-IgG κ BP-HRP: sc-516102 or m-IgG κ BP-HRP (Cruz Marker): sc-516102-CM (dilution range: 1:1000-1:10000), Cruz Marker[™] Molecular Weight Standards: sc-2035, UltraCruz[®] Blocking Reagent: sc-516214 and Western Blotting Luminol Reagent: sc-2048. 2) Immunoprecipitation: use Protein A/G PLUS-Agarose: sc-2003 (0.5 ml agarose/2.0 ml). 3) Immunofluorescence: use m-IgG κ BP-FITC: sc-516140 or m-IgG κ BP-PE: sc-516141 (dilution range: 1:50-1:200) with UltraCruz[®] Mounting Medium: sc-24941 or UltraCruz[®] Hard-set Mounting Medium: sc-359850.

DATA



CHP1 (B-6): sc-390834. Western blot analysis of CHP1 expression in TK-1 (A), Neuro-2A (B), K-562 (C) and Hep G2 (D) whole cell lysates and rat cerebellum tissue extract (E).



CHP1 (B-6): sc-390834. Western blot analysis of CHP1 expression in non-transfected: sc-117752 (A) and mouse CHP1 transfected: sc-119247 (B) 293T whole cell lysates and mouse liver (C), human liver (D) and human heart (E) tissue extracts.

STORAGE

Store at 4° C, **DO NOT FREEZE**. Stable for one year from the date of shipment. Non-hazardous. No MSDS required.

RESEARCH USE

For research use only, not for use in diagnostic procedures.

PROTOCOLS

See our web site at www.scbt.com for detailed protocols and support products.