

CD1C (B-6): sc-390980

BACKGROUND

The CD1 multigene family encodes five forms of the CD1 T-cell surface glycoprotein in human, designated CD1A, 1B, 1C, 1D and 1E. CD1, a type I membrane protein, has structural similarity to the MHC class I antigen and has been shown to present lipid antigens for recognition by T lymphocytes. CD1 antigens are associated with β -2-Microglobulin and expressed on cortical thymocytes, Langerhans cells, a B cell subset and some dendritic cells. Specifically, CD1A is a marker for Langerhans cell histiocytosis (LCH) and is found on interdigitating cells. Adaptor-protein complexes and CD1-associated chaperones control CD1 trafficking, and the development and activation of CD1-restricted T cells. Constitutive endocytosis of CD1B molecules and the differential sorting of MHC class II from lysosomes separate peptide- and lipid antigen-presenting molecules during dendritic cell maturation. CD1B is also expressed in interdigitating cells. The human CD1 genes are all closely linked in a cluster mapping at chromosome 1q23.1.

REFERENCES

- Martin, L.H., et al. 1987. Structure and expression of the human thymocyte antigens CD1A, CD1B, and CD1C. *Proc. Natl. Acad. Sci. USA* 84: 9189-9193.
- Arufo, A., et al. 1989. Expression of cDNA clones encoding the thymocyte antigens CD1A, B, C demonstrates a hierarchy of exclusion in fibroblasts. *J. Immunol.* 143: 1723-1730.
- Longley, J., et al. 1989. Molecular cloning of CD1A (T6), a human epidermal dendritic cell marker related to class I MHC molecules. *J. Invest. Dermatol.* 92: 628-631.
- Sotzik, F., et al. 1993. Surface antigens of human thymocyte populations defined by CD3, CD4 and CD8 expression: CD1A is expressed by mature thymocytes but not peripheral T cells. *Immunol. Lett.* 36: 101-106.

CHROMOSOMAL LOCATION

Genetic locus: CD1C (human) mapping to 1q23.1.

SOURCE

CD1C (B-6) is a mouse monoclonal antibody raised against amino acids 74-118 mapping within an internal region of CD1C of human origin.

PRODUCT

Each vial contains 200 μ g IgG₁ kappa light chain in 1.0 ml of PBS with < 0.1% sodium azide and 0.1% gelatin.

CD1C (B-6) is available conjugated to agarose (sc-390980 AC), 500 μ g/0.25 ml agarose in 1 ml, for IP; to HRP (sc-390980 HRP), 200 μ g/ml, for WB, IHC(P) and ELISA; to either phycoerythrin (sc-390980 PE), fluorescein (sc-390980 FITC), Alexa Fluor® 488 (sc-390980 AF488), Alexa Fluor® 546 (sc-390980 AF546), Alexa Fluor® 594 (sc-390980 AF594) or Alexa Fluor® 647 (sc-390980 AF647), 200 μ g/ml, for WB (RGB), IF, IHC(P) and FCM; and to either Alexa Fluor® 680 (sc-390980 AF680) or Alexa Fluor® 790 (sc-390980 AF790), 200 μ g/ml, for Near-Infrared (NIR) WB, IF and FCM.

RESEARCH USE

For research use only, not for use in diagnostic procedures.

APPLICATIONS

CD1C (B-6) is recommended for detection of CD1C of mouse, rat and human origin by Western Blotting (starting dilution 1:100, dilution range 1:100-1:1000), immunoprecipitation [1-2 μ g per 100-500 μ g of total protein (1 ml of cell lysate)], immunofluorescence (starting dilution 1:50, dilution range 1:50-1:500) and solid phase ELISA (starting dilution 1:30, dilution range 1:30-1:3000).

Suitable for use as control antibody for CD1C siRNA (h): sc-42746, CD1C shRNA Plasmid (h): sc-42746-SH and CD1C shRNA (h) Lentiviral Particles: sc-42746-V.

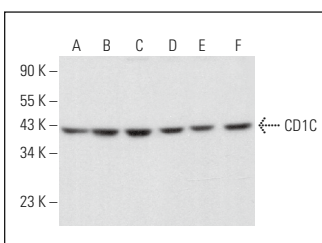
Molecular Weight of CD1C: 43 kDa.

Positive Controls: CCRF-CEM cell lysate: sc-2225, ALL-SIL whole cell lysate: sc-364356 or SUP-T1 whole cell lysate: sc-364796.

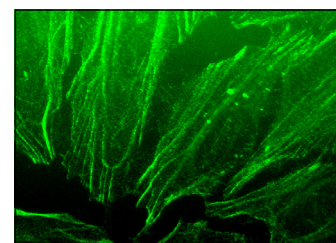
RECOMMENDED SUPPORT REAGENTS

To ensure optimal results, the following support reagents are recommended: 1) Western Blotting: use m-IgG κ BP-HRP: sc-516102 or m-IgG κ BP-HRP (Cruz Marker): sc-516102-CM (dilution range: 1:1000-1:10000), Cruz Marker™ Molecular Weight Standards: sc-2035, UltraCruz® Blocking Reagent: sc-516214 and Western Blotting Luminol Reagent: sc-2048. 2) Immunoprecipitation: use Protein A/G PLUS-Agarose: sc-2003 (0.5 ml agarose/2.0 ml). 3) Immunofluorescence: use m-IgG κ BP-FITC: sc-516140 or m-IgG κ BP-PE: sc-516141 (dilution range: 1:50-1:200) with UltraCruz® Mounting Medium: sc-24941 or UltraCruz® Hard-set Mounting Medium: sc-359850.

DATA



CD1C (B-6): sc-390980. Western blot analysis of CD1C expression in ALL-SIL (A), SUP-T1 (B), CCRF-CEM (C), RAW 264.7 (D), BYDP (E) and PC-12 (F) whole cell lysates.



CD1C (B-6): sc-390980. Immunofluorescence staining of methanol-fixed HeLa cells showing membrane localization.

SELECT PRODUCT CITATIONS

- Zheng, E., et al. 2022. Achaete-scute complex-like 2 regulated inflammatory mechanism through Toll-like receptor 4 activating in stomach adenocarcinoma. *World J. Surg. Oncol.* 20: 266.

STORAGE

Store at 4° C, **DO NOT FREEZE**. Stable for one year from the date of shipment. Non-hazardous. No MSDS required.

Alexa Fluor® is a trademark of Molecular Probes, Inc., Oregon, USA