

# CSN6 (B-1): sc-393023

## BACKGROUND

The COP9 signalosome (CSN) complex is involved in several different developmental and cellular processes. The complex is made up of several widely expressed proteins: CSN1 (COPS1), CSN2 (COPS2), CSN3 (COPS3), CSN4 (COPS4), CSN5 (COPS5), CSN6 (COP6), CSN7a (COPS7, COPS7a) or CSN7b (COP7b) and CSN8 (COP8). The CSN complex acts as a regulator for the ubiquitin conjugation pathway by mediating the deneddylation of the SCF-type E3 ligase complexes, which leads to a decrease in ubiquitin ligase activity of SCF-complexes. It is also involved in the phosphorylation of p53, c-Jun, IκBα and IRF-8, as well as CSN-dependent phosphorylation of p53, and c-Jun protects and promotes degradation by the Ubl system.

## CHROMOSOMAL LOCATION

Genetic locus: COPS6 (human) mapping to 7q22.1; Cops6 (mouse) mapping to 5 G2.

## SOURCE

CSN6 (B-1) is a mouse monoclonal antibody raised against amino acids 28-327 mapping at the C-terminus of CSN6 of human origin.

## PRODUCT

Each vial contains 200 µg IgG<sub>1</sub> kappa light chain in 1.0 ml of PBS with < 0.1% sodium azide and 0.1% gelatin.

CSN6 (B-1) is available conjugated to agarose (sc-393023 AC), 500 µg/0.25 ml agarose in 1 ml, for IP; to HRP (sc-393023 HRP), 200 µg/ml, for WB, IHC(P) and ELISA; to either phycoerythrin (sc-393023 PE), fluorescein (sc-393023 FITC), Alexa Fluor® 488 (sc-393023 AF488), Alexa Fluor® 546 (sc-393023 AF546), Alexa Fluor® 594 (sc-393023 AF594) or Alexa Fluor® 647 (sc-393023 AF647), 200 µg/ml, for WB (RGB), IF, IHC(P) and FCM; and to either Alexa Fluor® 680 (sc-393023 AF680) or Alexa Fluor® 790 (sc-393023 AF790), 200 µg/ml, for Near-Infrared (NIR) WB, IF and FCM.

## APPLICATIONS

CSN6 (B-1) is recommended for detection of CSN6 of mouse, rat and human origin by Western Blotting (starting dilution 1:100, dilution range 1:100-1:1000), immunoprecipitation [1-2 µg per 100-500 µg of total protein (1 ml of cell lysate)], immunofluorescence (starting dilution 1:50, dilution range 1:50-1:500), immunohistochemistry (including paraffin-embedded sections) (starting dilution 1:50, dilution range 1:50-1:500) and solid phase ELISA (starting dilution 1:30, dilution range 1:30-1:3000).

CSN6 (B-1) is also recommended for detection of CSN6 in additional species, including equine, canine, bovine and porcine.

Suitable for use as control antibody for CSN6 siRNA (h): sc-60461, CSN6 siRNA (m): sc-60462, CSN6 shRNA Plasmid (h): sc-60461-SH, CSN6 shRNA Plasmid (m): sc-60462-SH, CSN6 shRNA (h) Lentiviral Particles: sc-60461-V and CSN6 shRNA (m) Lentiviral Particles: sc-60462-V.

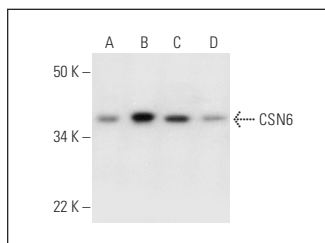
Molecular Weight of CSN6: 34 kDa.

Positive Controls: SW480 cell lysate: sc-2219, HeLa whole cell lysate: sc-2200 or 3T3-L1 cell lysate: sc-2243.

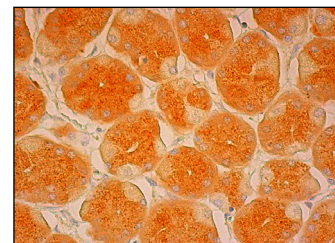
## RECOMMENDED SUPPORT REAGENTS

To ensure optimal results, the following support reagents are recommended: 1) Western Blotting: use m-IgGκ BP-HRP: sc-516102 or m-IgGκ BP-HRP (Cruz Marker): sc-516102-CM (dilution range: 1:1000-1:10000), Cruz Marker™ Molecular Weight Standards: sc-2035, UltraCruz® Blocking Reagent: sc-516214 and Western Blotting Luminol Reagent: sc-2048. 2) Immunoprecipitation: use Protein A/G PLUS-Agarose: sc-2003 (0.5 ml agarose/2.0 ml). 3) Immunofluorescence: use m-IgGκ BP-FITC: sc-516140 or m-IgGκ BP-PE: sc-516141 (dilution range: 1:50-1:200) with UltraCruz® Mounting Medium: sc-24941 or UltraCruz® Hard-set Mounting Medium: sc-359850. 4) Immunohistochemistry: use m-IgGκ BP-HRP: sc-516102 with DAB, 50X: sc-24982 and Immunohistomount: sc-45086, or Organo/Limonene Mount: sc-45087.

## DATA



CSN6 (B-1): sc-393023. Western blot analysis of CSN6 expression in SW480 (A), HeLa (B), 3T3-L1 (C) and A-375 (D) whole cell lysates.



CSN6 (B-1): sc-393023. Immunoperoxidase staining of formalin fixed, paraffin-embedded human lower stomach tissue showing cytoplasmic staining of glandular cells.

## SELECT PRODUCT CITATIONS

1. Wang, X. and Chen, T. 2021. CUL4A regulates endometrial cancer cell proliferation, invasion and migration by interacting with CSN6. *Mol. Med. Rep.* 23: 23.

## STORAGE

Store at 4° C, \*\*DO NOT FREEZE\*\*. Stable for one year from the date of shipment. Non-hazardous. No MSDS required.

## RESEARCH USE

For research use only, not for use in diagnostic procedures.

## PROTOCOLS

See our web site at [www.scbt.com](http://www.scbt.com) for detailed protocols and support products.

Alexa Fluor® is a trademark of Molecular Probes, Inc., Oregon, USA