

Integrin $\beta 2$ (H-7): sc-393140

BACKGROUND

Integrins are heterodimers composed of noncovalently associated transmembrane α and β subunits. The 16 α and 8 β subunits heterodimerize to produce more than 20 different receptors. Most integrin receptors bind ligands that are components of the extracellular matrix, including Fibronectin, collagen and Vitronectin. Certain integrins can also bind to soluble ligands such as Fibrinogen, or to counterreceptors on adjacent cells such as the intracellular adhesion molecules (ICAMs), leading to aggregation of cells. Ligands serve to cross-link or cluster integrins by binding to adjacent integrin receptors; both receptor clustering and ligand occupancy are necessary for the activation of integrin-mediated responses. In addition to mediating cell adhesion and cytoskeletal organization, integrins function as signaling receptors. Signals transduced by integrins play a role in many biological processes, including cell growth, differentiation, migration and apoptosis.

REFERENCES

- Hynes, R.O. 1992. Integrins: versatility, modulation and signaling in cell adhesion. *Cell* 69: 11-25.
- Miyamoto, S., et al. 1995. Synergistic roles for receptor occupancy and aggregation in integrin transmembrane function. *Science* 267: 883-885.
- Clark, E.A. and Brugge, J.S. 1995. Integrins and signal transduction pathways: the road taken. *Science* 268: 233-239.
- Sheppard, D. 1996. Epithelial integrins. *Bioessays* 18: 655-660.
- Juliano, R. 1996. Cooperation between soluble factors and integrin-mediated cell anchorage in the control of cell growth and differentiation. *Bioessays* 18: 911-917.
- Naessens, J., et al. 1997. Nomenclature and characterization of leukocyte differentiation antigens in ruminants. *Immunol. Today* 18: 365-638.
- Drbal, K., et al. 2000. Human leukocytes contain a large pool of free forms of CD18. *Biochem. Biophys. Res. Commun.* 275: 295-299.
- Drbal, K., et al. 2001. A proteolytically truncated form of free CD18, the common chain of leukocyte integrins, as a novel marker of activated myeloid cells. *Blood* 98: 1561-1566.

CHROMOSOMAL LOCATION

Genetic locus: ITGB2 (human) mapping to 21q22.3.

SOURCE

Integrin $\beta 2$ (H-7) is a mouse monoclonal antibody raised against amino acids 1-120 mapping within an N-terminal extracellular domain of Integrin $\beta 2$ of human origin.

PRODUCT

Each vial contains 200 μ g IgG₁ kappa light chain in 1.0 ml of PBS with < 0.1% sodium azide and 0.1% gelatin.

RESEARCH USE

For research use only, not for use in diagnostic procedures.

APPLICATIONS

Integrin $\beta 2$ (H-7) is recommended for detection of Integrin $\beta 2$ of human origin by Western Blotting (starting dilution 1:100, dilution range 1:100-1:1000), immunoprecipitation [1-2 μ g per 100-500 μ g of total protein (1 ml of cell lysate)], immunofluorescence (starting dilution 1:50, dilution range 1:50-1:500), immunohistochemistry (including paraffin-embedded sections) (starting dilution 1:50, dilution range 1:50-1:500) and solid phase ELISA (starting dilution 1:30, dilution range 1:30-1:3000).

Suitable for use as control antibody for Integrin $\beta 2$ siRNA (h): sc-29374, Integrin $\beta 2$ shRNA Plasmid (h): sc-29374-SH and Integrin $\beta 2$ shRNA (h) Lentiviral Particles: sc-29374-V.

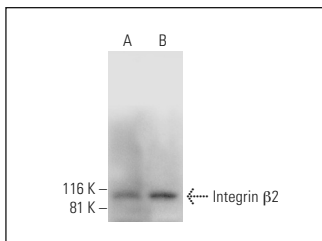
Molecular Weight of Integrin $\beta 2$: 95 kDa.

Positive Controls: HL-60 whole cell lysate: sc-2209 or K-562 whole cell lysate: sc-2203.

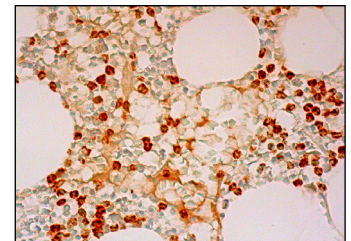
RECOMMENDED SUPPORT REAGENTS

To ensure optimal results, the following support reagents are recommended: 1) Western Blotting: use m-IgG κ BP-HRP: sc-516102 or m-IgG κ BP-HRP (Cruz Marker): sc-516102-CM (dilution range: 1:1000-1:10000), Cruz Marker™ Molecular Weight Standards: sc-2035, UltraCruz® Blocking Reagent: sc-516214 and Western Blotting Luminol Reagent: sc-2048. 2) Immunoprecipitation: use Protein A/G PLUS-Agarose: sc-2003 (0.5 ml agarose/2.0 ml). 3) Immunofluorescence: use m-IgG κ BP-FITC: sc-516140 or m-IgG κ BP-PE: sc-516141 (dilution range: 1:50-1:200) with UltraCruz® Mounting Medium: sc-24941 or UltraCruz® Hard-set Mounting Medium: sc-359850. 4) Immunohistochemistry: use m-IgG κ BP-HRP: sc-516102 with DAB, 50X: sc-24982 and Immunohistomount: sc-45086, or Organo/Limonene Mount: sc-45087.

DATA




Integrin $\beta 2$ (H-7): sc-393140. Western blot analysis of Integrin $\beta 2$ expression in HL-60 (A) and K-562 (B) whole cell lysates.



Integrin $\beta 2$ (H-7): sc-393140. Immunoperoxidase staining of formalin fixed, paraffin-embedded human bone marrow tissue showing cytoplasmic staining of a subset of hematopoietic cells.

STORAGE

Store at 4° C, **DO NOT FREEZE**. Stable for one year from the date of shipment. Non-hazardous. No MSDS required.



See **Integrin $\beta 2$ (CTB104): sc-8420** for Integrin $\beta 2$ antibody conjugates, including AC, HRP, FITC, PE, and Alexa Fluor® 488, 546, 594, 647, 680 and 790.