

DHFR (C-4): sc-393154



The Power to Question

BACKGROUND

Dihydrofolate reductase (DHFR) catalyzes the NADPH-dependent reduction of dihydrofolate to tetrahydrofolate, and is a crucial enzyme for the synthesis of purines, pyrimidines and some amino acids. Inhibition of the activity of this enzyme leads to arrest of DNA synthesis and cell death. Gene expression of methotrexate (MTX)-resistant variants of DHFR in normal hematopoietic cells is a potential strategy to permit administration of larger doses of MTX by alleviating drug toxicity in normal cells and tissues that are drug sensitive.

REFERENCES

1. Walker, V.K., et al. 2000. Tobacco budworm dihydrofolate reductase is a promising target for insecticide discovery. *Eur. J. Biochem.* 267: 394-403.
2. Li, R., et al. 2000. Three-dimensional structure of *M. tuberculosis* dihydrofolate reductase reveals opportunities for the design of novel tuberculosis drugs. *J. Mol. Biol.* 295: 307-323.
3. Yoshikawa, T., et al. 2000. Amplified gene location in chromosomal DNA affected recombinant protein production and stability of amplified genes. *Biotechnol. Prog.* 16: 710-715.

CHROMOSOMAL LOCATION

Genetic locus: DHFR (human) mapping to 5q14.1, DHFRL1 (human) mapping to 3q11.1; Dhfr (mouse) mapping to 13 C3.

SOURCE

DHFR (C-4) is a mouse monoclonal antibody specific for an epitope mapping between amino acids 77-106 within an internal region of DHFR of human origin.

PRODUCT

Each vial contains 200 µg IgG_{2b} kappa light chain in 1.0 ml of PBS with < 0.1% sodium azide and 0.1% gelatin.

Blocking peptide available for competition studies, sc-393154 P, (100 µg peptide in 0.5 ml PBS containing < 0.1% sodium azide and 0.2% stabilizer protein).

APPLICATIONS

DHFR (C-4) is recommended for detection of DHFR and DHFRL1 of human origin and DHFR of mouse and rat origin by Western Blotting (starting dilution 1:100, dilution range 1:100-1:1000), immunoprecipitation [1-2 µg per 100-500 µg of total protein (1 ml of cell lysate)], immunofluorescence (starting dilution 1:50, dilution range 1:50-1:500), immunohistochemistry (including paraffin-embedded sections) (starting dilution 1:50, dilution range 1:50-1:500) and solid phase ELISA (starting dilution 1:30, dilution range 1:30-1:3000).

Suitable for use as control antibody for DHFR siRNA (m): sc-37079, DHFR shRNA Plasmid (m): sc-37079-SH and DHFR shRNA (m) Lentiviral Particles: sc-37079-V.

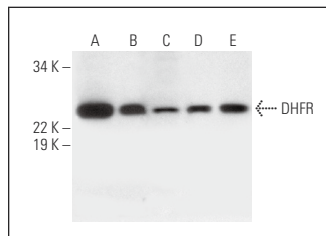
Molecular Weight of DHFR: 25 kDa.

Positive Controls: Y79 cell lysate: sc-2240, K-562 whole cell lysate: sc-2203 or HeLa whole cell lysate: sc-2200.

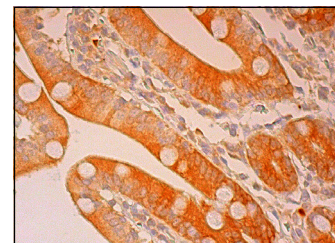
RECOMMENDED SUPPORT REAGENTS

To ensure optimal results, the following support reagents are recommended: 1) Western Blotting: use m-IgGκ BP-HRP: sc-516102 or m-IgGκ BP-HRP (Cruz Marker): sc-516102-CM (dilution range: 1:1000-1:10000), Cruz Marker™ Molecular Weight Standards: sc-2035, UltraCruz® Blocking Reagent: sc-516214 and Western Blotting Luminol Reagent: sc-2048. 2) Immunoprecipitation: use Protein A/G PLUS-Agarose: sc-2003 (0.5 ml agarose/2.0 ml). 3) Immunofluorescence: use m-IgGκ BP-FITC: sc-516140 or m-IgGκ BP-PE: sc-516141 (dilution range: 1:50-1:200) with UltraCruz® Mounting Medium: sc-24941 or UltraCruz® Hard-set Mounting Medium: sc-359850. 4) Immunohistochemistry: use m-IgGκ BP-HRP: sc-516102 with DAB, 50X: sc-24982 and Immunohistomount: sc-45086, or Organo/Limonene Mount: sc-45087.

DATA



DHFR (C-4): sc-393154. Western blot analysis of DHFR expression in HeLa (A), K-562 (B), A-431 (C), Jurkat (D) and Y79 (E) whole cell lysates.



DHFR (C-4): sc-393154. Immunoperoxidase staining of formalin fixed, paraffin-embedded human duodenum tissue showing cytoplasmic staining of glandular cells.

STORAGE

Store at 4° C, **DO NOT FREEZE**. Stable for one year from the date of shipment. Non-hazardous. No MSDS required.

RESEARCH USE

For research use only, not for use in diagnostic procedures.

PROTOCOLS

See our web site at www.scbt.com for detailed protocols and support products.



See **DHFR (A-9): sc-377091** for DHFR antibody conjugates, including AC, HRP, FITC, PE, and Alexa Fluor® 488, 546, 594, 647, 680 and 790.