

UIP1 (C-2): sc-393259

BACKGROUND

UIP1 (UCHL5-interacting protein, HAUS augmin-like complex subunit 7) is a 368 amino acid product of the human HAUS7 gene. UIP1 is subunit 7 of the HAUS augmin-like complex, which is involved with regulation of spindle assembly during mitosis and contributes to the integrity of the centrosome. The HAUS augmin-like complex associates with the γ -Tubulin RING complex. This interaction is required for spindle assembly. UIP1 also binds to UCHL5 (ubiquitin carboxyl-terminal hydrolase isozyme L5) which is a protease that specifically cleaves "Lys-48"-linked polyubiquitin chains. UIP1 localizes to the centrosome during interphase and becomes part of the spindle microtubules during mitosis. Detectable levels of expression have been found in spleen, thymus, testis, ovary, small intestine and colon tissues.

REFERENCES

- Esposito, T., et al. 1997. Expressed STSs and transcription of human Xq28. *Gene* 187: 185-191.
- Li, T., et al. 2001. Identification of two proteins, S14 and UIP1, that interact with UCH37. *FEBS Lett.* 488: 201-205.
- Wang, B., et al. 2008. Evaluation of the low-specificity protease elastase for large-scale phosphoproteome analysis. *Anal. Chem.* 80: 9526-9533.
- Dephoure, N., et al. 2008. A quantitative atlas of mitotic phosphorylation. *Proc. Natl. Acad. Sci. USA* 105: 10762-10767.
- Lawo, S., et al. 2009. HAUS, the 8-subunit human Augmin complex, regulates centrosome and spindle integrity. *Curr. Biol.* 19: 816-826.
- Uehara, R., et al. 2009. The augmin complex plays a critical role in spindle microtubule generation for mitotic progression and cytokinesis in human cells. *Proc. Natl. Acad. Sci. USA* 106: 6998-7003.

CHROMOSOMAL LOCATION

Genetic locus: HAUS7 (human) mapping to Xq28; Haus7 (mouse) mapping to X A7.3.

SOURCE

UIP1 (C-2) is a mouse monoclonal antibody raised against amino acids 1-300 mapping at the N-terminus of UIP1 of mouse origin.

PRODUCT

Each vial contains 200 μ g IgG₁ kappa light chain in 1.0 ml of PBS with < 0.1% sodium azide and 0.1% gelatin.

UIP1 (C-2) is available conjugated to agarose (sc-393259 AC), 500 μ g/0.25 ml agarose in 1 ml, for IP; to HRP (sc-393259 HRP), 200 μ g/ml, for WB, IHC(P) and ELISA; to either phycoerythrin (sc-393259 PE), fluorescein (sc-393259 FITC), Alexa Fluor[®] 488 (sc-393259 AF488), Alexa Fluor[®] 546 (sc-393259 AF546), Alexa Fluor[®] 594 (sc-393259 AF594) or Alexa Fluor[®] 647 (sc-393259 AF647), 200 μ g/ml, for WB (RGB), IF, IHC(P) and FCM; and to either Alexa Fluor[®] 680 (sc-393259 AF680) or Alexa Fluor[®] 790 (sc-393259 AF790), 200 μ g/ml, for Near-Infrared (NIR) WB, IF and FCM.

Alexa Fluor[®] is a trademark of Molecular Probes, Inc., Oregon, USA

APPLICATIONS

UIP1 (C-2) is recommended for detection of UIP1 of mouse, rat and human origin by Western Blotting (starting dilution 1:100, dilution range 1:100-1:1000), immunoprecipitation [1-2 μ g per 100-500 μ g of total protein (1 ml of cell lysate)], immunofluorescence (starting dilution 1:50, dilution range 1:50-1:500) and solid phase ELISA (starting dilution 1:30, dilution range 1:30-1:3000).

Suitable for use as control antibody for UIP1 siRNA (h): sc-91088, UIP1 siRNA (m): sc-154912, UIP1 shRNA Plasmid (h): sc-91088-SH, UIP1 shRNA Plasmid (m): sc-154912-SH, UIP1 shRNA (h) Lentiviral Particles: sc-91088-V and UIP1 shRNA (m) Lentiviral Particles: sc-154912-V.

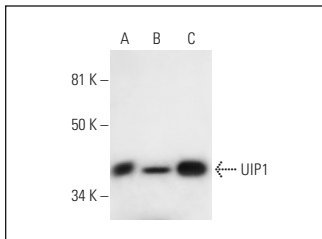
Molecular Weight of UIP1: 41 kDa.

Positive Controls: UIP1 (m): 293T Lysate: sc-124465, NIH/3T3 whole cell lysate: sc-2210 or CSMLO whole cell lysate: sc-364369.

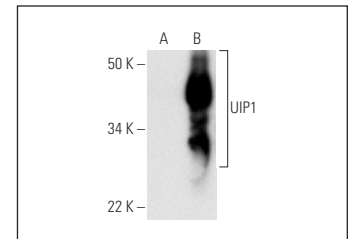
RECOMMENDED SUPPORT REAGENTS

To ensure optimal results, the following support reagents are recommended: 1) Western Blotting: use m-IgG κ BP-HRP: sc-516102 or m-IgG κ BP-HRP (Cruz Marker): sc-516102-CM (dilution range: 1:1000-1:10000), Cruz Marker[™] Molecular Weight Standards: sc-2035, UltraCruz[®] Blocking Reagent: sc-516214 and Western Blotting Luminol Reagent: sc-2048. 2) Immunoprecipitation: use Protein A/G PLUS-Agarose: sc-2003 (0.5 ml agarose/2.0 ml). 3) Immunofluorescence: use m-IgG κ BP-FITC: sc-516140 or m-IgG κ BP-PE: sc-516141 (dilution range: 1:50-1:200) with UltraCruz[®] Mounting Medium: sc-24941 or UltraCruz[®] Hard-set Mounting Medium: sc-359850.

DATA



UIP1 (C-2): sc-393259. Western blot analysis of UIP1 expression in NIH/3T3 (A), CSMLO (B) and F9 (C) whole cell lysates.



UIP1 (C-2): sc-393259. Western blot analysis of UIP1 expression in non-transfected: sc-117752 (A) and mouse UIP1 transfected: sc-124465 (B) 293T whole cell lysates.

STORAGE

Store at 4° C, **DO NOT FREEZE**. Stable for one year from the date of shipment. Non-hazardous. No MSDS required.

RESEARCH USE

For research use only, not for use in diagnostic procedures.

PROTOCOLS

See our web site at www.scbt.com for detailed protocols and support products.