

IL-3/IL-5/GM-CSFR β (F-12): sc-393281

BACKGROUND

The human IL-3, IL-5 and GM-CSF receptors are each composed of both unique α subunits and a common β subunit. The α subunits are low affinity ligand binding proteins while the β subunits do not themselves bind ligand, but are required for high affinity binding by the α subunits. In contrast, the mouse IL-3 receptor has two distinct β subunits, one that functions only in IL-3 mediated cell signaling and a second that is shared with IL-5 and GM-CSF. The murine β -subunits are 91% homologous at the amino acid level but only 56% homologous to the human β subunit. Although neither the murine nor the human β subunit contains tyrosine kinase domains, both activate tyrosine phosphorylation mediated signaling pathways.

REFERENCES

- Hayashida, K., et al. 1990. Molecular cloning of a second subunit of the receptor for human granulocyte macrophage colony-stimulating factor (GM-CSF): reconstitution of a high affinity GM-CSF receptor. Proc. Natl. Acad. Sci. USA 87: 9655-9659.
- Tavernier, J., et al. 1992. A human high affinity interleukin-5 receptor (IL-5R) is composed of an IL-5 specific chain and a β chain shared with the receptor for GM-CSF. Cell 66: 1175-1184.
- Hara, T., et al. 1992. Two distinct functional receptors for mouse interleukin-3. EMBO J. 11: 1875-1884.
- Miyajima, A., et al. 1992. Cytokine receptors and signal transduction. Annu. Rev. Immunol. 10: 295-331.

CHROMOSOMAL LOCATION

Genetic locus: CSF2RB (human) mapping to 22q12.3; Csf2rb (mouse) mapping to 15 E1.

SOURCE

IL-3/IL-5/GM-CSFR β (F-12) is a mouse monoclonal antibody specific for an epitope mapping between amino acids 867-893 at the C-terminus of IL-3/IL-5/GM-CSFR β of mouse origin.

PRODUCT

Each vial contains 200 μ g IgG $_1$ kappa light chain in 1.0 ml of PBS with < 0.1% sodium azide and 0.1% gelatin.

IL-3/IL-5/GM-CSFR β (F-12) is available conjugated to agarose (sc-393281 AC), 500 μ g/0.25 ml agarose in 1 ml, for IP; to HRP (sc-393281 HRP), 200 μ g/ml, for WB, IHC(P) and ELISA; to either phycoerythrin (sc-393281 PE), fluorescein (sc-393281 FITC), Alexa Fluor[®] 488 (sc-393281 AF488), Alexa Fluor[®] 546 (sc-393281 AF546), Alexa Fluor[®] 594 (sc-393281 AF594) or Alexa Fluor[®] 647 (sc-393281 AF647), 200 μ g/ml, for WB (RGB), IF, IHC(P) and FCM; and to either Alexa Fluor[®] 680 (sc-393281 AF680) or Alexa Fluor[®] 790 (sc-393281 AF790), 200 μ g/ml, for Near-Infrared (NIR) WB, IF and FCM.

Blocking peptide available for competition studies, sc-393281 P, (100 μ g peptide in 0.5 ml PBS containing < 0.1% sodium azide and 0.2% stabilizer protein).

Alexa Fluor[®] is a trademark of Molecular Probes, Inc., Oregon, USA

APPLICATIONS

IL-3/IL-5/GM-CSFR β (F-12) is recommended for detection of β chain common to IL-3, IL-5 and GM-CSFR of mouse, rat and human origin by Western Blotting (starting dilution 1:100, dilution range 1:100-1:1000), immunoprecipitation [1-2 μ g per 100-500 μ g of total protein (1 ml of cell lysate)], immunofluorescence (starting dilution 1:50, dilution range 1:50-1:500) and solid phase ELISA (starting dilution 1:30, dilution range 1:30-1:3000).

Suitable for use as control antibody for IL-3/IL-5/GM-CSFR β siRNA (h): sc-35658, IL-3/IL-5/GM-CSFR β siRNA (m): sc-35659, IL-3/IL-5/GM-CSFR β shRNA Plasmid (h): sc-35658-SH, IL-3/IL-5/GM-CSFR β shRNA Plasmid (m): sc-35659-SH, IL-3/IL-5/GM-CSFR β shRNA (h) Lentiviral Particles: sc-35658-V and IL-3/IL-5/GM-CSFR β shRNA (m) Lentiviral Particles: sc-35659-V.

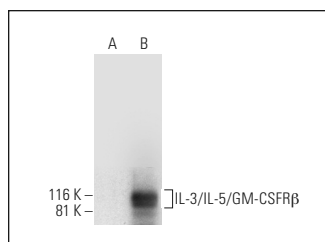
Molecular Weight of IL-3/IL-5/GM-CSFR β : 130 kDa.

Positive Controls: IL-3/IL-5/GM-CSFR β (h): 293T Lysate: sc-128879 or HuT 78 whole cell lysate: sc-2208.

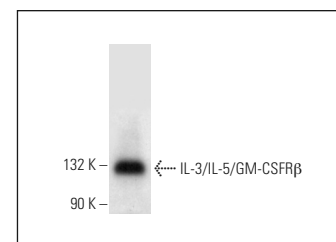
RECOMMENDED SUPPORT REAGENTS

To ensure optimal results, the following support reagents are recommended: 1) Western Blotting: use m-IgG κ BP-HRP: sc-516102 or m-IgG κ BP-HRP (Cruz Marker): sc-516102-CM (dilution range: 1:1000-1:10000), Cruz Marker[™] Molecular Weight Standards: sc-2035, UltraCruz[®] Blocking Reagent: sc-516214 and Western Blotting Luminol Reagent: sc-2048. 2) Immunoprecipitation: use Protein A/G PLUS-Agarose: sc-2003 (0.5 ml agarose/2.0 ml). 3) Immunofluorescence: use m-IgG κ BP-FITC: sc-516140 or m-IgG κ BP-PE: sc-516141 (dilution range: 1:50-1:200) with UltraCruz[®] Mounting Medium: sc-24941 or UltraCruz[®] Hard-set Mounting Medium: sc-359850.

DATA



IL-3/IL-5/GM-CSFR β (F-12): sc-393281. Western blot analysis of IL-3/IL-5/GM-CSFR β expression in non-transfected: sc-117752 (A) and human IL-3/IL-5/GM-CSFR β transfected: sc-128879 (B) 293T whole cell lysates.



IL-3/IL-5/GM-CSFR β (F-12): sc-393281. Western blot analysis of IL-3/IL-5/GM-CSFR β expression in HuT 78 whole cell lysate.

STORAGE

Store at 4° C, **DO NOT FREEZE**. Stable for one year from the date of shipment. Non-hazardous. No MSDS required.

RESEARCH USE

For research use only, not for use in diagnostic procedures.