

Med30 (C-6): sc-393289

BACKGROUND

Med30 is a subunit of the RNA polymerase II (Pol II) transcriptional mediator complex. The mediator complex is a coactivator involved in the regulated transcription of Pol II-dependent genes. The mediator complex functions as a bridge to convey information from gene-specific regulatory proteins to the basal Pol II transcription machinery, and is recruited to promoter regions by directly interacting with regulatory proteins. The mediator complex also serves as a scaffold for the assembly of a functional pre-initiation complex with Pol II and other general transcription factors. Found in the nucleus, Med30 is expressed in brain, heart, kidney, liver, lung, pancreas, placenta and skeletal muscle.

REFERENCES

1. Casamassimi, A. and Napoli, C. 2007. Mediator complexes and eukaryotic transcription regulation: an overview. *Biochimie* 89: 1439-1446.
2. Kim, B., et al. 2007. The transcription elongation factor TFIIIS is a component of RNA polymerase II preinitiation complexes. *Proc. Natl. Acad. Sci. USA* 104: 16068-16073.
3. Bjornsdottir, G. and Myers, L.C. 2008. Minimal components of the RNA polymerase II transcription apparatus determine the consensus TATA box. *Nucleic Acids Res.* 36: 2906-2916.
4. Bourbon, H.M. 2008. Comparative genomics supports a deep evolutionary origin for the large, four-module transcriptional mediator complex. *Nucleic Acids Res.* 36: 3993-4008.

CHROMOSOMAL LOCATION

Genetic locus: MED30 (human) mapping to 8q24.11; Med30 (mouse) mapping to 15 C.

SOURCE

Med30 (C-6) is a mouse monoclonal antibody raised against amino acids 1-178 representing full length Med30 of human origin.

PRODUCT

Each vial contains 200 µg IgG_{2a} kappa light chain in 1.0 ml of PBS with < 0.1% sodium azide and 0.1% gelatin.

Med30 (C-6) is available conjugated to agarose (sc-393289 AC), 500 µg/0.25 ml agarose in 1 ml, for IP; to HRP (sc-393289 HRP), 200 µg/ml, for WB, IHC(P) and ELISA; to either phycoerythrin (sc-393289 PE), fluorescein (sc-393289 FITC), Alexa Fluor[®] 488 (sc-393289 AF488), Alexa Fluor[®] 546 (sc-393289 AF546), Alexa Fluor[®] 594 (sc-393289 AF594) or Alexa Fluor[®] 647 (sc-393289 AF647), 200 µg/ml, for WB (RGB), IF, IHC(P) and FCM; and to either Alexa Fluor[®] 680 (sc-393289 AF680) or Alexa Fluor[®] 790 (sc-393289 AF790), 200 µg/ml, for Near-Infrared (NIR) WB, IF and FCM.

Alexa Fluor[®] is a trademark of Molecular Probes, Inc., Oregon, USA

STORAGE

Store at 4° C, ****DO NOT FREEZE****. Stable for one year from the date of shipment. Non-hazardous. No MSDS required.

APPLICATIONS

Med30 (C-6) is recommended for detection of Med30 of mouse, rat and human origin by Western Blotting (starting dilution 1:100, dilution range 1:100-1:1000), immunoprecipitation [1-2 µg per 100-500 µg of total protein (1 ml of cell lysate)], immunofluorescence (starting dilution 1:50, dilution range 1:50-1:500) and solid phase ELISA (starting dilution 1:30, dilution range 1:30-1:3000).

Suitable for use as control antibody for Med30 siRNA (h): sc-77529, Med30 siRNA (m): sc-149355, Med30 shRNA Plasmid (h): sc-77529-SH, Med30 shRNA Plasmid (m): sc-149355-SH, Med30 shRNA (h) Lentiviral Particles: sc-77529-V and Med30 shRNA (m) Lentiviral Particles: sc-149355-V.

Molecular Weight (predicted) of Med30: 20 kDa.

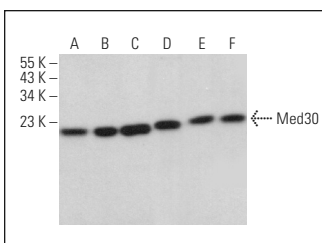
Molecular Weight (observed) of Med30: 24-30 kDa.

Positive Controls: Med30 (h2): 293T Lysate: sc-174753, HCT-116 whole cell lysate: sc-364175 or TE671 cell lysate: sc-2416.

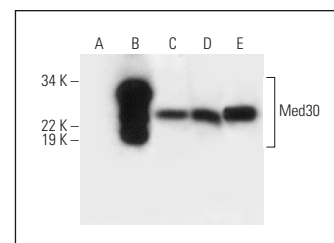
RECOMMENDED SUPPORT REAGENTS

To ensure optimal results, the following support reagents are recommended: 1) Western Blotting: use m-IgGκ BP-HRP: sc-516102 or m-IgGκ BP-HRP (Cruz Marker): sc-516102-CM (dilution range: 1:1000-1:10000), Cruz Marker[™] Molecular Weight Standards: sc-2035, UltraCruz[®] Blocking Reagent: sc-516214 and Western Blotting Luminol Reagent: sc-2048. 2) Immunoprecipitation: use Protein A/G PLUS-Agarose: sc-2003 (0.5 ml agarose/2.0 ml). 3) Immunofluorescence: use m-IgGκ BP-FITC: sc-516140 or m-IgGκ BP-PE: sc-516141 (dilution range: 1:50-1:200) with UltraCruz[®] Mounting Medium: sc-24941 or UltraCruz[®] Hard-set Mounting Medium: sc-359850.

DATA



Med30 (C-6): sc-393289. Western blot analysis of Med30 expression in PC-3 (A), MEG-01 (B), CCRF-CEM (C), Neuro-2A (D), ACHN (E) and BW5147 (F) whole cell lysates.



Med30 (C-6): sc-393289. Western blot analysis of Med30 expression in non-transfected 293T: sc-117752 (A), human Med30 transfected 293T: sc-174753 (B), HCT-116 (C) and TE671 (D) whole cell lysates and K-562 nuclear extract (E).

SELECT PRODUCT CITATIONS

1. Noh, J.K., et al. 2022. Gene signature predicting recurrence in oral squamous cell carcinoma is characterized by increased oxidative phosphorylation. *Mol. Oncol.* E-published.

RESEARCH USE

For research use only, not for use in diagnostic procedures.