

Integrin β 2 (C-4): sc-393790

BACKGROUND

Integrins are heterodimers composed of noncovalently associated transmembrane α and β subunits. The 16 α and 8 β subunits heterodimerize to produce more than 20 different receptors. Most integrin receptors bind ligands that are components of the extracellular matrix, including Fibronectin, collagen and Vitronectin. Certain integrins can also bind to soluble ligands such as fibrinogen, or to counterreceptors on adjacent cells such as the intracellular adhesion molecules (ICAMs), leading to aggregation of cells. Ligands serve to cross-link or cluster integrins by binding to adjacent integrin receptors; both receptor clustering and ligand occupancy are necessary for the activation of integrin-mediated responses. In addition to mediating cell adhesion and cytoskeletal organization, integrins function as signaling receptors. Signals transduced by integrins play a role in many biological processes, including cell growth, differentiation, migration and apoptosis.

CHROMOSOMAL LOCATION

Genetic locus: ITGB2 (human) mapping to 21q22.3; Itgb2 (mouse) mapping to 10 C1.

SOURCE

Integrin β 2 (C-4) is a mouse monoclonal antibody specific for an epitope mapping between amino acids 29-52 at the N-terminus of Integrin β 2 of human origin.

PRODUCT

Each vial contains 200 μ g IgG₁ kappa light chain in 1.0 ml of PBS with < 0.1% sodium azide and 0.1% gelatin.

Blocking peptide available for competition studies, sc-393790 P, (100 μ g peptide in 0.5 ml PBS containing < 0.1% sodium azide and 0.2% stabilizer protein).

STORAGE

Store at 4° C, ****DO NOT FREEZE****. Stable for one year from the date of shipment. Non-hazardous. No MSDS required.

APPLICATIONS

Integrin β 2 (C-4) is recommended for detection of Integrin β 2 of mouse, rat and human origin by Western Blotting (starting dilution 1:100, dilution range 1:100-1:1000), immunoprecipitation [1-2 μ g per 100-500 μ g of total protein (1 ml of cell lysate)], immunofluorescence (starting dilution 1:50, dilution range 1:50-1:500) and solid phase ELISA (starting dilution 1:30, dilution range 1:30-1:3000).

Suitable for use as control antibody for Integrin β 2 siRNA (h): sc-29374, Integrin β 2 siRNA (m): sc-35676, Integrin β 2 shRNA Plasmid (h): sc-29374-SH, Integrin β 2 shRNA Plasmid (m): sc-35676-SH, Integrin β 2 shRNA (h) Lentiviral Particles: sc-29374-V and Integrin β 2 shRNA (m) Lentiviral Particles: sc-35676-V.

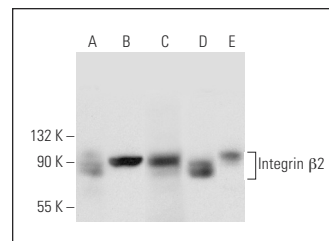
Molecular Weight of Integrin β 2: 95 kDa.

Positive Controls: HL-60 whole cell lysate: sc-2209, Jurkat whole cell lysate: sc-2204 or K-562 whole cell lysate: sc-2203.

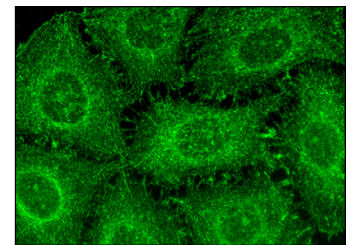
RECOMMENDED SUPPORT REAGENTS

To ensure optimal results, the following support reagents are recommended: 1) Western Blotting: use m-IgG κ BP-HRP: sc-516102 or m-IgG κ BP-HRP (Cruz Marker): sc-516102-CM (dilution range: 1:1000-1:10000), Cruz Marker™ Molecular Weight Standards: sc-2035, UltraCruz® Blocking Reagent: sc-516214 and Western Blotting Luminol Reagent: sc-2048. 2) Immunoprecipitation: use Protein A/G PLUS-Agarose: sc-2003 (0.5 ml agarose/2.0 ml). 3) Immunofluorescence: use m-IgG κ BP-FITC: sc-516140 or m-IgG κ BP-PE: sc-516141 (dilution range: 1:50-1:200) with UltraCruz® Mounting Medium: sc-24941 or UltraCruz® Hard-set Mounting Medium: sc-359850.

DATA



Integrin β 2 (C-4): sc-393790. Western blot analysis of Integrin β 2 expression in HL-60 (A), K-562 (B), HeLa (C) and Jurkat (D) whole cell lysates and human liver tissue extract (E).



Integrin β 2 (C-4): sc-393790. Immunofluorescence staining of methanol-fixed HeLa cells showing membrane and cytoplasmic localization.

SELECT PRODUCT CITATIONS

- Toscani, A.M., et al. 2017. Distinct ErbB2 receptor populations differentially interact with β 1 integrin in breast cancer cell models. *PLoS ONE* 12: e0174230.
- Dong, X., et al. 2019. Neutrophil membrane-derived nanovesicles alleviate inflammation to protect mouse brain injury from ischemic stroke. *ACS Nano* 13: 1272-1283.
- Gao, J., et al. 2023. Remote Co-loading of amphipathic acid drugs in neutrophil nanovesicles infilled with cholesterol mitigates lung bacterial infection and inflammation. *Biomaterials* 296: 122071.

RESEARCH USE

For research use only, not for use in diagnostic procedures.

PROTOCOLS

See our web site at www.scbt.com for detailed protocols and support products.



See **Integrin β 2 (CTB104): sc-8420** for Integrin β 2 antibody conjugates, including AC, HRP, FITC, PE, and Alexa Fluor® 488, 546, 594, 647, 680 and 790.