

GP73 (E-7): sc-393935

BACKGROUND

GP73 (also known as Golgi phosphoprotein 2, GOLPH 2 or Golgi membrane protein), is a widely expressed, epithelial-specific, type II transmembrane protein which resides in the Golgi apparatus, where it is responsible for the posttranslational modification of proteins produced in the rough ER while assisting in the transport of proteins through the Golgi. The human GP73 gene has been mapped within a BAC and localized to chromosome 9q21.33. GP73 levels rise in those who have been diagnosed with acute and chronic liver diseases.

REFERENCES

1. Kladney, R.D., et al. 2000. GP73, a novel Golgi-localized protein upregulated by viral infection. *Gene* 249: 53-65.
2. Kladney, R.D., et al. 2002. Expression of GP73, a resident Golgi membrane protein, in viral and nonviral liver disease. *Hepatology* 35: 1431-1440.
3. Kladney, R.D., et al. 2002. Upregulation of the Golgi protein GP73 by Adenovirus infection requires the E1A CtBP interaction domain. *Virology* 301: 236-246.
4. Online Mendelian Inheritance in Man, OMIM[™]. 2002. Johns Hopkins University, Baltimore, MD. MIM Number: 606804. World Wide Web URL: <http://www.ncbi.nlm.nih.gov/omim/>
5. Iftikhar, R., et al. 2004. Disease- and cell-specific expression of GP73 in human liver disease. *Am. J. Gastroenterol.* 99: 1087-1095.
6. Maitra, A., et al. 2004. GP73 and liver disease: a (Golgi) complex enigma. *Am. J. Gastroenterol.* 99: 1096-1098.

CHROMOSOMAL LOCATION

Genetic locus: Golm1 (mouse) mapping to 13 B2.

SOURCE

GP73 (E-7) is a mouse monoclonal antibody specific for an epitope mapping between amino acids 365-392 at the C-terminus of GP73 of mouse origin.

PRODUCT

Each vial contains 200 µg IgG_{2a} kappa light chain in 1.0 ml of PBS with < 0.1% sodium azide and 0.1% gelatin.

GP73 (E-7) is available conjugated to agarose (sc-393935 AC), 500 µg/0.25 ml agarose in 1 ml, for IP; to HRP (sc-393935 HRP), 200 µg/ml, for WB, IHC(P) and ELISA; to either phycoerythrin (sc-393935 PE), fluorescein (sc-393935 FITC), Alexa Fluor[®] 488 (sc-393935 AF488), Alexa Fluor[®] 546 (sc-393935 AF546), Alexa Fluor[®] 594 (sc-393935 AF594) or Alexa Fluor[®] 647 (sc-393935 AF647), 200 µg/ml, for WB (RGB), IF, IHC(P) and FCM; and to either Alexa Fluor[®] 680 (sc-393935 AF680) or Alexa Fluor[®] 790 (sc-393935 AF790), 200 µg/ml, for Near-Infrared (NIR) WB, IF and FCM.

Blocking peptide available for competition studies, sc-393935 P, (100 µg peptide in 0.5 ml PBS containing < 0.1% sodium azide and 0.2% stabilizer protein).

Alexa Fluor[®] is a trademark of Molecular Probes, Inc., Oregon, USA

APPLICATIONS

GP73 (E-7) is recommended for detection of GP73 of mouse origin by Western Blotting (starting dilution 1:100, dilution range 1:100-1:1000), immunoprecipitation [1-2 µg per 100-500 µg of total protein (1 ml of cell lysate)], immunofluorescence (starting dilution 1:50, dilution range 1:50-1:500), immunohistochemistry (including paraffin-embedded sections) (starting dilution 1:50, dilution range 1:50-1:500) and solid phase ELISA (starting dilution 1:30, dilution range 1:30-1:3000).

Suitable for use as control antibody for GP73 siRNA (m): sc-60712, GP73 shRNA Plasmid (m): sc-60712-SH and GP73 shRNA (m) Lentiviral Particles: sc-60712-V.

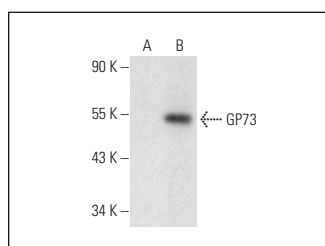
Molecular Weight of GP73: 73 kDa.

Positive Controls: GP73 (m): 293T Lysate: sc-120573.

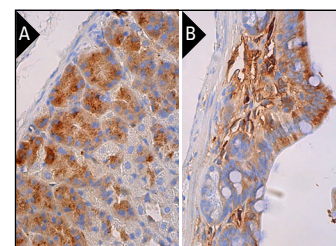
RECOMMENDED SUPPORT REAGENTS

To ensure optimal results, the following support reagents are recommended: 1) Western Blotting: use m-IgGκ BP-HRP: sc-516102 or m-IgGκ BP-HRP (Cruz Marker): sc-516102-CM (dilution range: 1:1000-1:10000), Cruz Marker[™] Molecular Weight Standards: sc-2035, UltraCruz[®] Blocking Reagent: sc-516214 and Western Blotting Luminol Reagent: sc-2048. 2) Immunoprecipitation: use Protein A/G PLUS-Agarose: sc-2003 (0.5 ml agarose/2.0 ml). 3) Immunofluorescence: use m-IgGκ BP-FITC: sc-516140 or m-IgGκ BP-PE: sc-516141 (dilution range: 1:50-1:200) with UltraCruz[®] Mounting Medium: sc-24941 or UltraCruz[®] Hard-set Mounting Medium: sc-359850. 4) Immunohistochemistry: use m-IgGκ BP-HRP: sc-516102 with DAB, 50X: sc-24982 and Immunohistomount: sc-45086, or Organo/Limonene Mount: sc-45087.

DATA



GP73 (E-7): sc-393935. Western blot analysis of GP73 expression in non-transfected: sc-117752 (A) and mouse GP73 transfected: sc-120573 (B) 293T whole cell lysates.



GP73 (E-7): sc-393935. Immunoperoxidase staining of formalin fixed, paraffin-embedded mouse stomach tissue showing cytoplasmic staining of glandular cells (A). Immunoperoxidase staining of formalin fixed, paraffin-embedded mouse small intestine tissue showing cytoplasmic staining of glandular cells (B).

STORAGE

Store at 4° C, **DO NOT FREEZE**. Stable for one year from the date of shipment. Non-hazardous. No MSDS required.

RESEARCH USE

For research use only, not for use in diagnostic procedures.