

SLA2 (E-8): sc-398134



The Power to Question

BACKGROUND

SLA2 (Src-like-adapter 2), also known as C20orf156 or SLAP2, is a 261 amino acid protein that exists as four alternatively spliced isoforms which localize to either the cytoplasm or to the cell membrane and contain one SH2 domain and one SH3 domain. Expressed predominately in tissues of the immune system, including thymus, spleen and lymph nodes, SLA2 functions as an adaptor protein that negatively regulates T-cell receptor (TCR) signaling and may inhibit T-cell activation. SLA2 interacts with Zap-70 and is subject to post-translational phosphorylation. The gene encoding SLA2 maps to human chromosome 20. Comprising approximately 2% of the human genome, chromosome 20 contains nearly 63 million bases that encode over 600 genes, some of which are associated with Creutzfeldt-Jakob disease, amyotrophic lateral sclerosis, spinal muscular atrophy, ring chromosome 20 epilepsy syndrome and Alagille syndrome.

REFERENCES

- Holland, S.J., et al. 2001. Functional cloning of Src-like adapter protein-2 (SLAP-2), a novel inhibitor of antigen receptor signaling. *J. Exp. Med.* 194: 1263-1276.
- Online Mendelian Inheritance in Man, OMIM™. 2001. Johns Hopkins University, Baltimore, MD. MIM Number: 606577. World Wide Web URL: <http://www.ncbi.nlm.nih.gov/omim/>
- Pandey, A., et al. 2002. A novel Src homology 2 domain-containing molecule, Src-like adapter protein-2 (SLAP-2), which negatively regulates T cell receptor signaling. *J. Biol. Chem.* 277: 19131-19138.

CHROMOSOMAL LOCATION

Genetic locus: SLA2 (human) mapping to 20q11.23; Sla2 (mouse) mapping to 2 H1.

SOURCE

SLA2 (E-8) is a mouse monoclonal antibody specific for an epitope mapping between amino acids 37-62 within an internal region of SLA2 of human origin.

PRODUCT

Each vial contains 200 µg IgG_{2b} kappa light chain in 1.0 ml of PBS with < 0.1% sodium azide and 0.1% gelatin.

SLA2 (E-8) is available conjugated to agarose (sc-398134 AC), 500 µg/0.25 ml agarose in 1 ml, for IP; to HRP (sc-398134 HRP), 200 µg/ml, for WB, IHC(P) and ELISA; to either phycoerythrin (sc-398134 PE), fluorescein (sc-398134 FITC), Alexa Fluor® 488 (sc-398134 AF488), Alexa Fluor® 546 (sc-398134 AF546), Alexa Fluor® 594 (sc-398134 AF594) or Alexa Fluor® 647 (sc-398134 AF647), 200 µg/ml, for WB (RGB), IF, IHC(P) and FCM; and to either Alexa Fluor® 680 (sc-398134 AF680) or Alexa Fluor® 790 (sc-398134 AF790), 200 µg/ml, for Near-Infrared (NIR) WB, IF and FCM.

Blocking peptide available for competition studies, sc-398134 P, (100 µg peptide in 0.5 ml PBS containing < 0.1% sodium azide and 0.2% stabilizer protein).

Alexa Fluor® is a trademark of Molecular Probes, Inc., Oregon, USA

APPLICATIONS

SLA2 (E-8) is recommended for detection of SLA2 of mouse, rat and human origin by Western Blotting (starting dilution 1:100, dilution range 1:100-1:1000), immunoprecipitation [1-2 µg per 100-500 µg of total protein (1 ml of cell lysate)], immunofluorescence (starting dilution 1:50, dilution range 1:50-1:500) and solid phase ELISA (starting dilution 1:30, dilution range 1:30-1:3000).

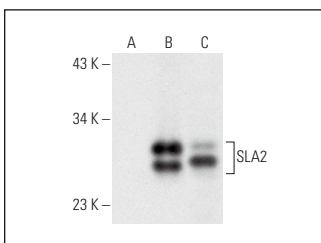
Suitable for use as control antibody for SLA2 siRNA (h): sc-76503, SLA2 siRNA (m): sc-153480, SLA2 shRNA Plasmid (h): sc-76503-SH, SLA2 shRNA Plasmid (m): sc-153480-SH, SLA2 shRNA (h) Lentiviral Particles: sc-76503-V and SLA2 shRNA (m) Lentiviral Particles: sc-153480-V.

Molecular Weight of SLA2: 29 kDa.

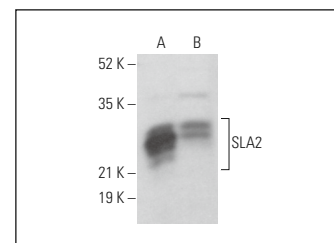
Positive Controls: SLA2 (h): 293T Lysate: sc-115917, K-562 whole cell lysate: sc-2203 or Jurkat whole cell lysate: sc-2204.

RECOMMENDED SUPPORT REAGENTS

To ensure optimal results, the following support reagents are recommended: 1) Western Blotting: use m-IgGκ BP-HRP: sc-516102 or m-IgGκ BP-HRP (Cruz Marker): sc-516102-CM (dilution range: 1:1000-1:10000), Cruz Marker™ Molecular Weight Standards: sc-2035, UltraCruz® Blocking Reagent: sc-516214 and Western Blotting Luminol Reagent: sc-2048. 2) Immunoprecipitation: use Protein A/G PLUS-Agarose: sc-2003 (0.5 ml agarose/2.0 ml). 3) Immunofluorescence: use m-IgGκ BP-FITC: sc-516140 or m-IgGκ BP-PE: sc-516141 (dilution range: 1:50-1:200) with UltraCruz® Mounting Medium: sc-24941 or UltraCruz® Hard-set Mounting Medium: sc-359850.

DATA

SLA2 (E-8): sc-398134. Western blot analysis of SLA2 expression in non-transfected 293T: sc-117752 (A), human SLA2 transfected 293T: sc-115917 (B) and Jurkat (C) whole cell lysates.



SLA2 (E-8): sc-398134. Western blot analysis of SLA2 expression in Jurkat (A) and K-562 (B) whole cell lysates.

STORAGE

Store at 4° C, **DO NOT FREEZE**. Stable for one year from the date of shipment. Non-hazardous. No MSDS required.

RESEARCH USE

For research use only, not for use in diagnostic procedures.

PROTOCOLS

See our web site at www.scbt.com for detailed protocols and support products.