

FAM217B (E-11): sc-398170

BACKGROUND

Representing about 2% of human DNA, chromosome 20 consists of approximately 63 million bases and 600 genes. Chromosome 20 contains a region with numerous genes expressed in the epididymis, which are thought important for seminal production, and some viewed as potential targets for male contraception. The PRNP gene encoding the prion protein associated with spongiform encephalopathies, like Creutzfeldt-Jakob disease, is found on chromosome 20. Amyotrophic lateral sclerosis, spinal muscular atrophy, RING chromosome 20 epilepsy syndrome and Alagille syndrome are also associated with chromosome 20.

REFERENCES

1. Prusiner, S.B. 1998. The prion diseases. *Brain Pathol.* 8: 499-513.
2. Collins, S., McLean, C.A. and Masters, C.L. 2001. Gerstmann-Sträussler-Scheinker syndrome, fatal familial insomnia and kuru: a review of these less common human transmissible spongiform encephalopathies. *J. Clin. Neurosci.* 8: 387-397.
3. Masullo, C. and Macchi, G. 2001. Does PRNP gene control the clinical and pathological phenotype of human spongiform transmissible encephalopathies? *Clin. Neuropathol.* 20: 19-25.
4. Joó, J.G., Beke, A., Tóth-Pál, E., Hargitai, B., Szigeti, Z., Papp, C. and Papp, Z. 2006. Trisomy 20 mosaicism and nonmosaic trisomy 20: a report of 2 cases. *J. Reprod. Med.* 51: 209-212.
5. Ville, D., Kaminska, A., Bahi-Buisson, N., Biraben, A., Plouin, P., Telvi, L., Dulac, O. and Chiron, C. 2006. Early pattern of epilepsy in the RING chromosome 20 syndrome. *Epilepsia* 47: 543-549.
6. Elghezal, H., Hannachi, H., Mougou, S., Kammoun, H., Triki, C. and Saad, A. 2007. RING chromosome 20 syndrome without deletions of the subtelomeric and CHRNA4-KCNQ2 genes loci. *Eur. J. Med. Genet.* 50: 441-445.
7. Kazantsev, A.G. 2007. Cellular pathways leading to neuronal dysfunction and degeneration. *Drug News Perspect.* 20: 501-509.
8. Lundwall, A. 2007. A locus on chromosome 20 encompassing genes that are highly expressed in the epididymis. *Asian J. Androl.* 9: 540-544.
9. O'Rand, M.G., Widgren, E.E., Wang, Z. and Richardson, R.T. 2007. Eppin: an epididymal protease inhibitor and a target for male contraception. *Soc. Reprod. Fertil. Suppl.* 63: 445-453.

CHROMOSOMAL LOCATION

Genetic locus: FAM217B (human) mapping to 20q13.33.

SOURCE

FAM217B (E-11) is a mouse monoclonal antibody specific for an epitope mapping between amino acids 34-51 near the N-terminus of FAM217B of human origin.

STORAGE

Store at 4° C, ****DO NOT FREEZE****. Stable for one year from the date of shipment. Non-hazardous. No MSDS required.

PRODUCT

Each vial contains 200 µg IgM kappa light chain in 1.0 ml of PBS with < 0.1% sodium azide and 0.1% gelatin.

Blocking peptide available for competition studies, sc-398170 P, (100 µg peptide in 0.5 ml PBS containing < 0.1% sodium azide and 0.2% stabilizer protein).

APPLICATIONS

FAM217B (E-11) is recommended for detection of FAM217B of human origin by Western Blotting (starting dilution 1:100, dilution range 1:100-1:1000), immunoprecipitation [1-2 µg per 100-500 µg of total protein (1 ml of cell lysate)], immunofluorescence (starting dilution 1:50, dilution range 1:50-1:500) and solid phase ELISA (starting dilution 1:30, dilution range 1:30-1:3000).

Suitable for use as control antibody for FAM217B siRNA (h): sc-72720, FAM217B shRNA Plasmid (h): sc-72720-SH and FAM217B shRNA (h) Lentiviral Particles: sc-72720-V.

Molecular Weight of FAM217B: 42 kDa.

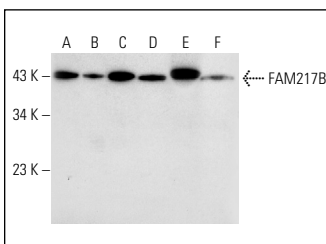
Positive Controls: K-562 whole cell lysate: sc-2203, Jurkat whole cell lysate: sc-2204 or T24 cell lysate: sc-2292.

RECOMMENDED SUPPORT REAGENTS

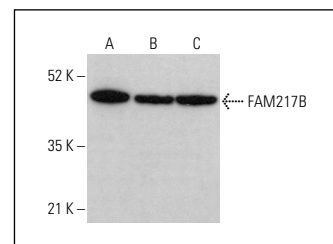
To ensure optimal results, the following support reagents are recommended:

- 1) Western Blotting: use m-IgGκ BP-HRP: sc-516102 or m-IgGκ BP-HRP (Cruz Marker): sc-516102-CM (dilution range: 1:1000-1:10000), Cruz Marker™ Molecular Weight Standards: sc-2035, UltraCruz® Blocking Reagent: sc-516214 and Western Blotting Luminol Reagent: sc-2048.
- 2) Immunoprecipitation: use Protein L-Agarose: sc-2336 (0.5 ml agarose/2.0 ml).
- 3) Immunofluorescence: use m-IgGκ BP-FITC: sc-516140 or m-IgGκ BP-PE: sc-516141 (dilution range: 1:50-1:200) with UltraCruz® Mounting Medium: sc-24941 or UltraCruz® Hard-set Mounting Medium: sc-359850.

DATA



FAM217B (E-11): sc-398170. Western blot analysis of FAM217B expression in T24 (A), CCRF-CEM (B), Jurkat (C), HL-60 (D), K-562 (E) and RT-4 (F) whole cell lysates.



FAM217B (E-11): sc-398170. Western blot analysis of FAM217B expression in Jurkat (A), HL-60 (B) and MIA PaCa-2 (C) whole cell lysates.

RESEARCH USE

For research use only, not for use in diagnostic procedures.