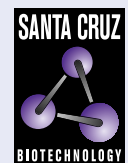


WDR70 (C-5): sc-398268



The Power to Question

BACKGROUND

WD-repeats are motifs that are found in a variety of proteins and are characterized by a conserved core of 40-60 amino acids, which commonly form a tertiary propeller structure. While proteins that contain WD-repeats participate in a wide range of cellular functions, they are generally involved in regulatory mechanisms involving signal transduction, apoptosis, transcriptional regulation or cell cycle control. WD repeats serve as sites for protein-protein interaction and some seem to mediate the assembly of protein complexes. WDR70 (WD repeat-containing protein 70) is a 654 amino acid protein that contains seven WD repeats and belongs to the WD repeat GAD-1 family. WDR70 is encoded by a gene located on human chromosome 5q13.2.

REFERENCES

1. Neer, E.J., et al. 1994. The ancient regulatory-protein family of WD-repeat proteins. *Nature* 371: 297-300.
2. Garcia-Higuera, I., et al. 1996. Folding of proteins with WD-repeats: comparison of six members of the WD-repeat superfamily to the G protein β subunit. *Biochemistry* 35: 13985-13994.
3. Smith, T.F., et al. 1999. The WD repeat: a common architecture for diverse functions. *Trends Biochem. Sci.* 24: 181-185.
4. Yu, L., et al. 2000. Thirty-plus functional families from a single motif. *Protein Sci.* 9: 2470-2476.
5. Li, D. and Roberts, R. 2001. WD-repeat proteins: structure characteristics, biological function, and their involvement in human diseases. *Cell. Mol. Life Sci.* 58: 2085-2097.
6. van Nocker, S. and Ludwig, P. 2003. The WD-repeat protein superfamily in *Arabidopsis*: conservation and divergence in structure and function. *BMC Genomics* 4: 50.

CHROMOSOMAL LOCATION

Genetic locus: WDR70 (human) mapping to 5p13.2; Wdr70 (mouse) mapping to 15 A1.

SOURCE

WDR70 (C-5) is a mouse monoclonal antibody raised against amino acids 355-654 mapping at the C-terminus of WDR70 of human origin.

PRODUCT

Each vial contains 200 μ g IgG_{2a} kappa light chain in 1.0 ml of PBS with < 0.1% sodium azide and 0.1% gelatin.

WDR70 (C-5) is available conjugated to agarose (sc-398268 AC), 500 μ g/0.25 ml agarose in 1 ml, for IP; to HRP (sc-398268 HRP), 200 μ g/ml, for WB, IHC(P) and ELISA; to either phycoerythrin (sc-398268 PE), fluorescein (sc-398268 FITC), Alexa Fluor® 488 (sc-398268 AF488), Alexa Fluor® 546 (sc-398268 AF546), Alexa Fluor® 594 (sc-398268 AF594) or Alexa Fluor® 647 (sc-398268 AF647), 200 μ g/ml, for WB (RGB), IF, IHC(P) and FCM; and to either Alexa Fluor® 680 (sc-398268 AF680) or Alexa Fluor® 790 (sc-398268 AF790), 200 μ g/ml, for Near-Infrared (NIR) WB, IF and FCM.

Alexa Fluor® is a trademark of Molecular Probes, Inc., Oregon, USA

APPLICATIONS

WDR70 (C-5) is recommended for detection of WDR70 of mouse, rat and human origin by Western Blotting (starting dilution 1:100, dilution range 1:100-1:1000), immunoprecipitation [1-2 μ g per 100-500 μ g of total protein (1 ml of cell lysate)], immunofluorescence (starting dilution 1:50, dilution range 1:50-1:500) and solid phase ELISA (starting dilution 1:30, dilution range 1:30-1:3000).

Suitable for use as control antibody for WDR70 siRNA (h): sc-91602, WDR70 siRNA (m): sc-155311, WDR70 shRNA Plasmid (h): sc-91602-SH, WDR70 shRNA Plasmid (m): sc-155311-SH, WDR70 shRNA (h) Lentiviral Particles: sc-91602-V and WDR70 shRNA (m) Lentiviral Particles: sc-155311-V.

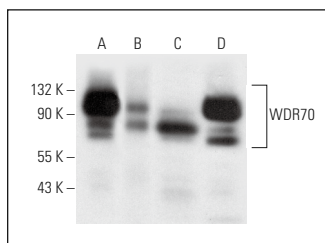
Molecular Weight of WDR70: 73 kDa.

Positive Controls: HeLa whole cell lysate: sc-2200, RT-4 whole cell lysate: sc-364257 or U-251-MG whole cell lysate: sc-364176.

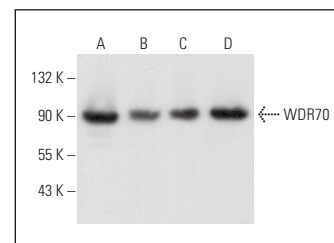
RECOMMENDED SUPPORT REAGENTS

To ensure optimal results, the following support reagents are recommended: 1) Western Blotting: use m-IgG κ BP-HRP: sc-516102 or m-IgG κ BP-HRP (Cruz Marker): sc-516102-CM (dilution range: 1:1000-1:10000), Cruz Marker™ Molecular Weight Standards: sc-2035, UltraCruz® Blocking Reagent: sc-516214 and Western Blotting Luminol Reagent: sc-2048. 2) Immunoprecipitation: use Protein A/G PLUS-Agarose: sc-2003 (0.5 ml agarose/2.0 ml). 3) Immunofluorescence: use m-IgG κ BP-FITC: sc-516140 or m-IgG κ BP-PE: sc-516141 (dilution range: 1:50-1:200) with UltraCruz® Mounting Medium: sc-24941 or UltraCruz® Hard-set Mounting Medium: sc-359850.

DATA



WDR70 (C-5): sc-398268. Western blot analysis of WDR70 expression in HeLa (A), HEK293T (B), RT-4 (C) and U-251-MG (D) whole cell lysates.



WDR70 (C-5): sc-398268. Western blot analysis of WDR70 expression in HEK293 (A), KNRK (B), AT3B-1 (C) and NIH/3T3 (D) whole cell lysates.

SELECT PRODUCT CITATIONS

1. Mirman, Z., et al. 2022. Expression of BRCA1, BRCA2, Rad51, and other DSB repair factors is regulated by CRL4^{WDR70}. *DNA Repair* 113: 103320.

STORAGE

Store at 4° C, **DO NOT FREEZE**. Stable for one year from the date of shipment. Non-hazardous. No MSDS required.

RESEARCH USE

For research use only, not for use in diagnostic procedures.