

# pan CEA (C-4): sc-398504

## BACKGROUND

Carcinoembryonic antigen (CEA) is one of the most commonly used tumor markers in serum immunoassay determinations of carcinoma. Members of the CEACAM (carcinoembryonic antigen-related cell adhesion molecule) family contain a single N domain, with structural homology to the immunoglobulin variable domains, followed by a variable number of immunoglobulin constant-like A and/or B domains. CEACAMS, such as CEACAM1, CEACAM7, CD66C, CD66D and CD66E, have diverse roles within the cell, including roles in the differentiation and arrangement of tissue three-dimensional structure, angiogenesis, apoptosis, tumor suppression, metastasis, and the modulation of innate and adaptive immune responses. The human CEACAM proteins are encoded by genes which are located within a 1.2 Mb cluster on the long arm of chromosome 19.

## REFERENCES

- Muenzner, P., et al. 2008. The CEACAM1 transmembrane domain, but not the cytoplasmic domain, directs internalization of human pathogens via membrane microdomains. *Cell. Microbiol.* 10: 1074-1092.
- Skubitz, K.M. and Skubitz, A.P. 2008. Interdependency of CEACAM-1, -3, -6, and -8 induced human neutrophil adhesion to endothelial cells. *J. Transl. Med.* 6: 78.
- Lee, H.S., et al. 2008. CEACAM1 dynamics during neisseria gonorrhoeae suppression of CD4<sup>+</sup> T lymphocyte activation. *J. Immunol.* 180: 6827-6835.
- Gaur, S., et al. 2008. Altered splicing of CEACAM1 in breast cancer: identification of regulatory sequences that control splicing of CEACAM1 into long or short cytoplasmic domain isoforms. *Mol. Cancer* 7: 46.
- Slevogt, H., et al. 2008. CEACAM1 inhibits Toll-like receptor 2-triggered antibacterial responses of human pulmonary epithelial cells. *Nat. Immunol.* 9: 1270-1278.
- Nittka, S., et al. 2008. The CEACAM1-mediated apoptosis pathway is activated by CEA and triggers dual cleavage of CEACAM1. *Oncogene* 27: 3721-3728.
- Zalzali, H., et al. 2008. CEACAM1, a SOX9 direct transcriptional target identified in the colon epithelium. *Oncogene* 27: 7131-7138.
- Callaghan, M.J., et al. 2008. Haplotypic diversity in human CEACAM genes: effects on susceptibility to meningococcal disease. *Genes Immun.* 9: 30-37.
- Rahmoun, M., et al. 2009. Cytokine-induced CEACAM1 expression on keratinocytes is characteristic for psoriatic skin and contributes to a prolonged lifespan of neutrophils. *J. Invest. Dermatol.* 129: 671-681.

## SOURCE

pan CEA (C-4) is a mouse monoclonal antibody specific for an epitope mapping between amino acids 122-143 within an internal region of CEACAM5 of human origin.

## STORAGE

Store at 4° C, **\*\*DO NOT FREEZE\*\***. Stable for one year from the date of shipment. Non-hazardous. No MSDS required.

## PRODUCT

Each vial contains 200 µg IgG<sub>1</sub> kappa light chain in 1.0 ml of PBS with < 0.1% sodium azide and 0.1% gelatin.

Blocking peptide available for competition studies, sc-398504 P, (100 µg peptide in 0.5 ml PBS containing < 0.1% sodium azide and 0.2% stabilizer protein).

## APPLICATIONS

pan CEA (C-4) is recommended for detection of a broad range of CEACAM family members of human origin by Western Blotting (starting dilution 1:100, dilution range 1:100-1:1000), immunoprecipitation [1-2 µg per 100-500 µg of total protein (1 ml of cell lysate)], immunofluorescence (starting dilution 1:50, dilution range 1:50-1:500) and solid phase ELISA (starting dilution 1:30, dilution range 1:30-1:3000).

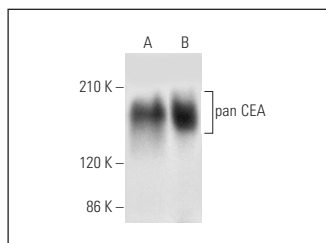
Molecular Weight of pan CEA: 80-200 kDa.

Positive Controls: T84 whole cell lysate: sc-364797, MCF7 whole cell lysate: sc-2206 or Raji whole cell lysate: sc-364236.

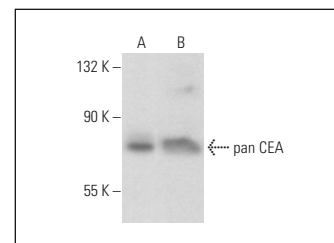
## RECOMMENDED SUPPORT REAGENTS

To ensure optimal results, the following support reagents are recommended:  
 1) Western Blotting: use m-IgGκ BP-HRP: sc-516102 or m-IgGκ BP-HRP (Cruz Marker): sc-516102-CM (dilution range: 1:1000-1:10000), Cruz Marker™ Molecular Weight Standards: sc-2035, UltraCruz® Blocking Reagent: sc-516214 and Western Blotting Luminol Reagent: sc-2048. 2) Immunoprecipitation: use Protein A/G PLUS-Agarose: sc-2003 (0.5 ml agarose/2.0 ml). 3) Immunofluorescence: use m-IgGκ BP-FITC: sc-516140 or m-IgGκ BP-PE: sc-516141 (dilution range: 1:50-1:200) with UltraCruz® Mounting Medium: sc-24941 or UltraCruz® Hard-set Mounting Medium: sc-359850.

## DATA



pan CEA (C-4): sc-398504. Western blot analysis of pan CEA expression in LS1034 (A) and T84 (B) whole cell lysates.



pan CEA (C-4): sc-398504. Western blot analysis of pan CEA expression in MCF7 (A) and Raji (B) whole cell lysates.

## RESEARCH USE

For research use only, not for use in diagnostic procedures.

## PROTOCOLS

See our web site at [www.scbt.com](http://www.scbt.com) for detailed protocols and support products.