

PRDM11 (G-12): sc-398876

BACKGROUND

The PR-domain containing proteins (PRDMs) have a common involvement in the modulation of gene activities. A PR-domain family member usually produces two products, called PR-plus and PR-minus, which differ by the presence or absence of the PR domain, respectively. The PR-plus product is under-expressed or disrupted in cancer cells, whereas the PR-minus product is present or overexpressed in cancer cells. This imbalance in the amount of the two products, which is a result of either genetic or epigenetic events, appears to be a determining factor of malignancy. PRDM11 (PR domain-containing protein 11), also known as PFM8, is a 511 amino acid protein that exists as two alternatively spliced isoforms and belongs to the PRDM family. The gene encoding PRDM11 localizes to chromosome 11p11.2 within the minimal liver tumor suppressor region.

REFERENCES

1. Liu, L., et al. 1997. The retinoblastoma interacting zinc finger gene RIZ produces a PR domain-lacking product through an internal promoter. *J. Biol. Chem.* 272: 2984-2991.
2. Huang, S. 1999. The retinoblastoma protein-interacting zinc finger gene RIZ in 1p36-linked cancers. *Front. Biosci.* 4: D528-D532.
3. Jiang, G.L. and Huang, S. 2000. The yin-yang of PR-domain family genes in tumorigenesis. *Histol. Histopathol.* 15: 109-117.
4. Nagase, T., et al. 2000. Prediction of the coding sequences of unidentified human genes. XV. The complete sequences of 100 new cDNA clones from brain which code for large proteins *in vitro*. *DNA Res.* 6: 337-345.

CHROMOSOMAL LOCATION

Genetic locus: PRDM11 (human) mapping to 11p11.2.

SOURCE

PRDM11 (G-12) is a mouse monoclonal antibody specific for an epitope mapping between amino acids 419-447 within an internal region of PRDM11 of human origin.

PRODUCT

Each vial contains 200 µg IgG₁ kappa light chain in 1.0 ml of PBS with < 0.1% sodium azide and 0.1% gelatin.

PRDM11 (G-12) is available conjugated to agarose (sc-398876 AC), 500 µg/0.25 ml agarose in 1 ml, for IP; to HRP (sc-398876 HRP), 200 µg/ml, for WB, IHC(P) and ELISA; to either phycoerythrin (sc-398876 PE), fluorescein (sc-398876 FITC), Alexa Fluor[®] 488 (sc-398876 AF488), Alexa Fluor[®] 546 (sc-398876 AF546), Alexa Fluor[®] 594 (sc-398876 AF594) or Alexa Fluor[®] 647 (sc-398876 AF647), 200 µg/ml, for WB (RGB), IF, IHC(P) and FCM; and to either Alexa Fluor[®] 680 (sc-398876 AF680) or Alexa Fluor[®] 790 (sc-398876 AF790), 200 µg/ml, for Near-Infrared (NIR) WB, IF and FCM.

Blocking peptide available for competition studies, sc-398876 P, (100 µg peptide in 0.5 ml PBS containing < 0.1% sodium azide and 0.2% stabilizer protein).

Alexa Fluor[®] is a trademark of Molecular Probes, Inc., Oregon, USA

APPLICATIONS

PRDM11 (G-12) is recommended for detection of PRDM11 of human origin by Western Blotting (starting dilution 1:100, dilution range 1:100-1:1000), immunoprecipitation [1-2 µg per 100-500 µg of total protein (1 ml of cell lysate)], immunofluorescence (starting dilution 1:50, dilution range 1:50-1:500) and solid phase ELISA (starting dilution 1:30, dilution range 1:30-1:3000).

Suitable for use as control antibody for PRDM11 siRNA (h): sc-96801, PRDM11 shRNA Plasmid (h): sc-96801-SH and PRDM11 shRNA (h) Lentiviral Particles: sc-96801-V.

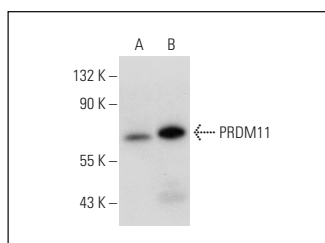
Molecular Weight of PRDM11 isoforms: 58/54 kDa.

Positive Controls: HL-60 whole cell lysate: sc-2209 or A549 cell lysate: sc-2413.

RECOMMENDED SUPPORT REAGENTS

To ensure optimal results, the following support reagents are recommended: 1) Western Blotting: use m-IgGκ BP-HRP: sc-516102 or m-IgGκ BP-HRP (Cruz Marker): sc-516102-CM (dilution range: 1:1000-1:10000), Cruz Marker[™] Molecular Weight Standards: sc-2035, UltraCruz[®] Blocking Reagent: sc-516214 and Western Blotting Luminol Reagent: sc-2048. 2) Immunoprecipitation: use Protein A/G PLUS-Agarose: sc-2003 (0.5 ml agarose/2.0 ml). 3) Immunofluorescence: use m-IgGκ BP-FITC: sc-516140 or m-IgGκ BP-PE: sc-516141 (dilution range: 1:50-1:200) with UltraCruz[®] Mounting Medium: sc-24941 or UltraCruz[®] Hard-set Mounting Medium: sc-359850.

DATA



PRDM11 (G-12): sc-398876. Western blot analysis of PRDM11 expression in HL-60 (A) and A549 (B) whole cell lysates.

STORAGE

Store at 4° C, ****DO NOT FREEZE****. Stable for one year from the date of shipment. Non-hazardous. No MSDS required.

RESEARCH USE

For research use only, not for use in diagnostic procedures.

PROTOCOLS

See our web site at www.scbt.com for detailed protocols and support products.