

resistin-like β (H-8): sc-398922

BACKGROUND

The cysteine-rich, adipose tissue-specific, secretory factor resistin (resistance to Insulin, also known as ADSF) is a secreted hormone that potentially links obesity to diabetes. Resistin is rich in serine and cysteine residues and contains a unique cysteine repeat motif. Resistin and the resistin-like molecules share the characteristic cysteine composition and other signature features. Resistin-like α is a secreted protein that has restricted tissue distribution and is most highly expressed in adipose tissue. Another family member, resistin-like β , is a secreted protein expressed only in the gastrointestinal tract, particularly in the colon, in both mouse and human. Resistin-like β expression is highest in proliferative epithelial cells and is markedly increased in tumors, suggesting a role in intestinal proliferation.

REFERENCES

- Kim, K.H., et al. 2001. A cysteine-rich adipose tissue-specific secretory factor inhibits adipocyte differentiation. *J. Biol. Chem.* 276: 11252-11256.
- Dove, A. 2001. Resistin diabetes. *Nat. Biotechnol.* 19: 217.
- Flier, J.S. 2001. Diabetes. The missing link with obesity? *Nature* 409: 292-293.
- Steppan, C.M., et al. 2001. The hormone resistin links obesity to diabetes. *Nature* 409: 307-312.
- Steppan, C.M., et al. 2001. A family of tissue-specific resistin-like molecules. *Proc. Natl. Acad. Sci. USA* 98: 502-506.
- Vendrell, J., et al. 2004. Resistin, adiponectin, ghrelin, leptin, and proinflammatory cytokines: relationships in obesity. *Obes. Res.* 12: 962-971.

CHROMOSOMAL LOCATION

Genetic locus: Retnlb (mouse) mapping to 16 B5.

SOURCE

resistin-like β (H-8) is a mouse monoclonal antibody specific for an epitope mapping between amino acids 23-39 near the N-terminus of resistin-like β of mouse origin.

PRODUCT

Each vial contains 200 μ g IgG_{2a} kappa light chain in 1.0 ml of PBS with < 0.1% sodium azide and 0.1% gelatin.

resistin-like β (H-8) is available conjugated to agarose (sc-398922 AC), 500 μ g/0.25 ml agarose in 1 ml, for IP; to HRP (sc-398922 HRP), 200 μ g/ml, for WB, IHC(P) and ELISA; to either phycoerythrin (sc-398922 PE), fluorescein (sc-398922 FITC), Alexa Fluor® 488 (sc-398922 AF488), Alexa Fluor® 546 (sc-398922 AF546), Alexa Fluor® 594 (sc-398922 AF594) or Alexa Fluor® 647 (sc-398922 AF647), 200 μ g/ml, for WB (RGB), IF, IHC(P) and FCM; and to either Alexa Fluor® 680 (sc-398922 AF680) or Alexa Fluor® 790 (sc-398922 AF790), 200 μ g/ml, for Near-Infrared (NIR) WB, IF and FCM.

Blocking peptide available for competition studies, sc-398922 P, (100 μ g peptide in 0.5 ml PBS containing < 0.1% sodium azide and 0.2% stabilizer protein).

APPLICATIONS

resistin-like β (H-8) is recommended for detection of resistin-like β of mouse and rat origin by Western Blotting (starting dilution 1:100, dilution range 1:100-1:1000), immunoprecipitation [1-2 μ g per 100-500 μ g of total protein (1 ml of cell lysate)], immunofluorescence (starting dilution 1:50, dilution range 1:50-1:500) and solid phase ELISA (starting dilution 1:30, dilution range 1:30-1:3000).

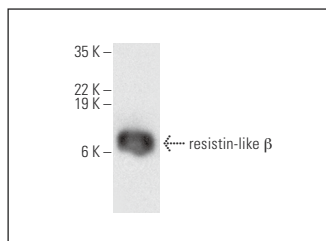
Suitable for use as control antibody for resistin-like β siRNA (m): sc-152817, resistin-like β shRNA Plasmid (m): sc-152817-SH and resistin-like β shRNA (m) Lentiviral Particles: sc-152817-V.

Positive Controls: mouse colon extract: sc-364238.

RECOMMENDED SUPPORT REAGENTS

To ensure optimal results, the following support reagents are recommended: 1) Western Blotting: use m-IgG κ BP-HRP: sc-516102 or m-IgG κ BP-HRP (Cruz Marker): sc-516102-CM (dilution range: 1:1000-1:10000), Cruz Marker™ Molecular Weight Standards: sc-2035, UltraCruz® Blocking Reagent: sc-516214 and Western Blotting Luminol Reagent: sc-2048. 2) Immunoprecipitation: use Protein A/G PLUS-Agarose: sc-2003 (0.5 ml agarose/2.0 ml). 3) Immunofluorescence: use m-IgG κ BP-FITC: sc-516140 or m-IgG κ BP-PE: sc-516141 (dilution range: 1:50-1:200) with UltraCruz® Mounting Medium: sc-24941 or UltraCruz® Hard-set Mounting Medium: sc-359850.

DATA



resistin-like β (H-8): sc-398922. Western blot analysis of resistin-like β expression in mouse colon tissue extract.

SELECT PRODUCT CITATIONS

- Luo, S., et al. 2018. Effect of nutritional supplement on bone marrow-derived mesenchymal stem cells from aplastic anaemia. *Br. J. Nutr.* 119: 748-758.

STORAGE

Store at 4° C, **DO NOT FREEZE**. Stable for one year from the date of shipment. Non-hazardous. No MSDS required.

RESEARCH USE

For research use only, not for use in diagnostic procedures.

Alexa Fluor® is a trademark of Molecular Probes, Inc., Oregon, USA