

UBE2G1 (H-2): sc-398969

BACKGROUND

Ubiquitin is an abundant, highly conserved protein found in all eukaryotic cells either free or covalently attached to cellular proteins. The primary function of ubiquitin in mammalian systems is to clear abnormal, foreign, and improperly folded proteins by targeting them for proteasome degradation. In *Saccharomyces cerevisiae*, ubiquitin-like proteins include Rub1, Ula1, Uba3, Smt3, Ubc2, Ubc12 and Ubc9. Rub1 shares 53% homology with ubiquitin and requires activation via the E2 proteins, including Ula1, Uba3 and Ubc12 in order to conjugate to substrates directed to different proteolytic systems. Ubc4 catalyzes ubiquitination of I κ B α in a phosphorylation and SCFB-TRCP dependent manner. In this particular reaction, E1 first transfers ubiquitin to the E2 component Ubc4, and Ubc4 then associates with E3 ligase, which conjugates the poly-ubiquitin chain on a target protein. In this fashion, the chain tags the I κ B α for degradation by a proteasome thus lifting the inhibitory effect of I κ B α on NF κ B and allowing NF κ B to enter the nucleus.

REFERENCES

- Ciechanover, A. 1994. The ubiquitin-proteasome proteolytic pathway. Cell 79: 13-21.
- Ciechanover, A., et al. 1994. The ubiquitin-mediated proteolytic pathway: mechanisms of recognition of the proteolytic substrate and involvement in the degradation of native cellular proteins. FASEB J. 8: 182-191.
- Hochstrasser, M. 1995. Ubiquitin, proteasomes and the regulation of intracellular protein degradation. Curr. Opin. Cell Biol. 7: 215-223.
- Liakopoulos, D., et al. 1998. A novel protein modification pathway related to the ubiquitin system. EMBO J. 17: 2208-2214.
- Schwarz, S.E., et al. 1998. The ubiquitin-like proteins SMT3 and SUMO-1 are conjugated by the UBC9 E2 enzyme. Proc. Natl. Acad. Sci. USA 95: 560-564.

CHROMOSOMAL LOCATION

Genetic locus: UBE2G1 (human) mapping to 17p13.2; Ube2g1 (mouse) mapping to 11 B4.

SOURCE

UBE2G1 (H-2) is a mouse monoclonal antibody raised against amino acids 1-50 mapping at the N-terminus of UBE2G1 of human origin.

PRODUCT

Each vial contains 200 μ g IgG $_1$ kappa light chain in 1.0 ml of PBS with < 0.1% sodium azide and 0.1% gelatin. and 0.1% gelatin.

UBE2G1 (H-2) is available conjugated to agarose (sc-398969 AC), 500 μ g/0.25 ml agarose in 1 ml, for IP; to HRP (sc-398969 HRP), 200 μ g/ml, for WB, IHC(P) and ELISA; to either phycoerythrin (sc-398969 PE), fluorescein (sc-398969 FITC), Alexa Fluor[®] 488 (sc-398969 AF488), Alexa Fluor[®] 546 (sc-398969 AF546), Alexa Fluor[®] 594 (sc-398969 AF594) or Alexa Fluor[®] 647 (sc-398969 AF647), 200 μ g/ml, for WB (RGB), IF, IHC(P) and FCM; and to either Alexa Fluor[®] 680 (sc-398969 AF680) or Alexa Fluor[®] 790 (sc-398969 AF790), 200 μ g/ml, for Near-Infrared (NIR) WB, IF and FCM.

APPLICATIONS

UBE2G1 (H-2) is recommended for detection of UBE2G1 of mouse, rat and human origin by Western Blotting (starting dilution 1:100, dilution range 1:100-1:1000), immunoprecipitation [1-2 μ g per 100-500 μ g of total protein (1 ml of cell lysate)], immunofluorescence (starting dilution 1:50, dilution range 1:50-1:500) and solid phase ELISA (starting dilution 1:30, dilution range 1:30-1:3000).

Suitable for use as control antibody for UBE2G1 siRNA (h): sc-93745, UBE2G1 siRNA (m): sc-36772, UBE2G1 shRNA Plasmid (h): sc-93745-SH, UBE2G1 shRNA Plasmid (m): sc-36772-SH, UBE2G1 shRNA (h) Lentiviral Particles: sc-93745-V and UBE2G1 shRNA (m) Lentiviral Particles: sc-36772-V.

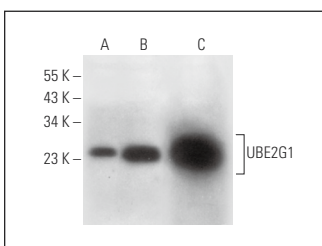
Molecular Weight of UBE2G1: 17 kDa.

Positive Controls: HeLa whole cell lysate: sc-2200, A-673 cell lysate: sc-2414 or HCT-116 whole cell lysate: sc-364175.

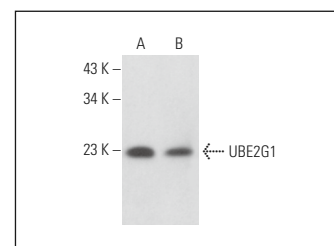
RECOMMENDED SUPPORT REAGENTS

To ensure optimal results, the following support reagents are recommended: 1) Western Blotting: use m-IgG κ BP-HRP: sc-516102 or m-IgG κ BP-HRP (Cruz Marker): sc-516102-CM (dilution range: 1:1000-1:10000), Cruz Marker[™] Molecular Weight Standards: sc-2035, UltraCruz[®] Blocking Reagent: sc-516214 and Western Blotting Luminol Reagent: sc-2048. 2) Immunoprecipitation: use Protein A/G PLUS-Agarose: sc-2003 (0.5 ml agarose/2.0 ml). 3) Immunofluorescence: use m-IgG κ BP-FITC: sc-516140 or m-IgG κ BP-PE: sc-516141 (dilution range: 1:50-1:200) with UltraCruz[®] Mounting Medium: sc-24941 or UltraCruz[®] Hard-set Mounting Medium: sc-359850.

DATA



UBE2G1 (H-2): sc-398969. Western blot analysis of UBE2G1 expression in HeLa (A), A-673 (B) and HCT-116 (C) whole cell lysates.



UBE2G1 (H-2): sc-398969. Western blot analysis of UBE2G1 expression in SJRH30 (A) and BC3H1 (B) whole cell lysates.

STORAGE

Store at 4[°] C, **DO NOT FREEZE**. Stable for one year from the date of shipment. Non-hazardous. No MSDS required.

RESEARCH USE

For research use only, not for use in diagnostic procedures.

Alexa Fluor[®] is a trademark of Molecular Probes, Inc., Oregon, USA