

goat anti-mouse IgG_{2a}-PerCP: sc-45093

BACKGROUND

Santa Cruz Biotechnology's secondary antibodies are available conjugated to either an enzyme, biotin or fluorophore for use in a variety of antibody-based applications including Western Blot, immunostaining, flow cytometry and ELISA. Secondary antibodies are commonly affinity purified against immobilized whole IgG or against antibody fragments. Santa Cruz Biotechnology offers isotype-specific secondary antibodies for immunohistochemistry and flow cytometry that specifically detect mouse immunoglobulin classes such as IgG₁, IgG_{2a}, IgG_{2b}, IgG₃, IgM and IgA. Isotype-specific secondary antibodies are available conjugated to either biotin, FITC (fluorescein isothiocyanate), Texas Red[®], TRITC (tetramethyl rhodamine iso-thiocyanate), PE (phycoerythrin), PerCP (peridinin chlorophyll protein complex) and PerCP-Cy5.5 (peridinin chlorophyll protein complex with cyanin-5.5)

SOURCE

goat anti-mouse IgG_{2a}-PerCP is a pre-adsorbed, affinity purified secondary antibody raised in goat against mouse IgG_{2a} and conjugated to PerCP (peridinin chlorophyll protein).

PRODUCT

Each vial contains 200 µg goat IgG_{2a} (pre-adsorbed with human IgG) in 0.5 ml of PBS containing 0.1% gelatin and 0.1% sodium azide.

APPLICATIONS

goat anti-mouse IgG_{2a}-PerCP is recommended for detection of mouse IgG_{2a} by immunofluorescence staining (starting dilution: 1:100, dilution range: 1:100-1:400), immunohistochemical staining (starting dilution: 1:100, dilution range: 1:100-1:400) and flow cytometry (0.5-1 µg per 1 x 10⁶ cells).

RECOMMENDED SUPPORT PRODUCTS

A. TISSUE CULTURE CELLS

- CrystalCruz™ Cover Glasses, 22 x 50 mm: sc-24975
- CrystalCruz™ Micro Slides 75 x 25 mm; frosted sides: sc-24976
- PBS, powder: sc-24947
- Formaldehyde: sc-203049
- Hydrogen Peroxide: sc-203336

B. FROZEN TISSUE SECTIONS

- Organo/Limonene Mount: sc-45087
- UltraCruz™ Mounting Medium: sc-24941
- ImmunoHistoMount: sc-45086
- Immuno In Situ Mount: sc-45088

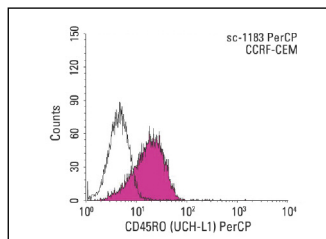
C. FORMALIN-FIXED, PARAFFIN-EMBEDDED TISSUE SECTIONS

- Paraffin: sc-286633
- Xylenes: sc-237422
- Hematoxylin: sc-24973

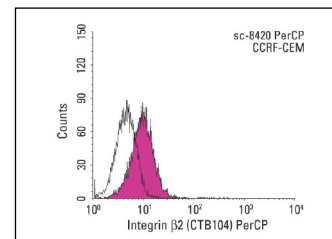
STORAGE

Store at 4° C, ****DO NOT FREEZE****. Stable for one year from the date of shipment. Non-hazardous. No MSDS required.

DATA



goat anti-mouse IgG_{2a}-PerCP: sc-45093. Indirect FCM analysis of CCRF-CEM stained with CD45RO (UCH-L1), followed by PerCP-conjugated goat anti-mouse IgG_{2a}: sc-45093. Black line histogram represents the isotype control, normal mouse IgG_{2a}: sc-3878. Antibody tested: CD45RO (UCH-L1): sc-1183.



goat anti-mouse IgG_{2a}-PerCP: sc-45093. Indirect FCM analysis of CCRF-CEM stained with Integrin beta2 (CTB104), followed by PerCP-conjugated goat anti-mouse IgG_{2a}: sc-45093. Black line histogram represents the isotype control, normal mouse IgG_{2a}: sc-3878. Antibody tested: Integrin beta2 (CTB104): sc-8420.

RESEARCH USE

For research use only, not for use in diagnostic procedures.

PROTOCOLS

See our web site at www.scbt.com or our catalog for detailed protocols and support products.