

mouse anti-rabbit IgG-PerCP: sc-45098

BACKGROUND

Santa Cruz Biotechnology's high quality, well characterized monoclonal secondary antibodies are available conjugated to either an enzyme, biotin or fluorophore for use in a variety of antibody-based applications, including Western blotting, immunostaining and flow cytometry. Santa Cruz secondary antibodies are commonly affinity purified against immobilized whole IgG isotypes, including IgG₁, IgG_{2a}, IgG_{2b}, IgG₃ and IgG₄. Monoclonal secondary antibodies are available conjugated to HRP for Western blotting (WB) and immunohistochemistry (IHC); (CM) or Cruz Marker form of HRP conjugated secondary antibodies are suitable for use with our Cruz Marker™ molecular weight standards; FITC (fluorescein isothiocyanate), PE (phycoerythrin), R (TRITC: tetramethyl rhodamine isothiocyanate), TR (Texas Red®), PerCP (peridinin chlorophyll protein complex), PerCP-Cy5.5 (peridinin chlorophyll protein complex with cyanin-5.5), and CruzFluor™ (488, 555 and 594) for immunofluorescence (IF), immunohistochemistry (IHC) and flow cytometry (FCM); B (biotin) for immunohistochemistry (IHC); AP (alkaline phosphatase) for Western blotting (WB); and CruzFluor® 680 and 790 for near-infrared (NIR) Western blotting (WB), immunofluorescence (IF), immunohistochemistry (IHC) and flow cytometry (FCM).

SOURCE

mouse anti-rabbit IgG-PerCP is an affinity purified secondary antibody raised in mouse against rabbit IgG and conjugated to PerCP (peridinin chlorophyll protein complex).

PRODUCT

Each vial contains 200 µg mouse IgG in 0.5 ml of PBS containing 0.1% gelatin and 0.1% sodium azide.

APPLICATIONS

mouse anti-rabbit IgG-PerCP is recommended for detection of rabbit IgG by immunofluorescence staining (starting dilution: 1:100, dilution range: 1:100-1:400), immunohistochemical staining (starting dilution: 1:100, dilution range: 1:100-1:400) and flow cytometry (0.5-1 µg per 1 x 10⁶ cells). Optimal dilution to be determined by titration.

STORAGE

Store at 4° C, ****DO NOT FREEZE****. Stable for one year from the date of shipment. Non-hazardous. No MSDS required.

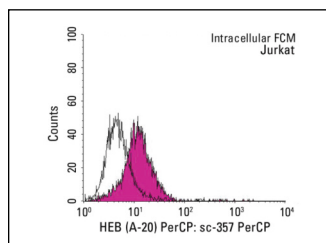
PROTOCOLS

See our web site at www.scbt.com for detailed protocols and support products.

RECOMMENDED SUPPORT PRODUCTS

- CrystalCruz® Cover Glasses, 22 x 50 mm, precleaned: sc-24975
- PBS (Phosphate Buffered Saline), powder, 1 packet: sc-24947
- Formaldehyde, 37% formaldehyde solution, 25 ml: sc-203049
- Hydrogen Peroxide, 30% solution, 100 ml: sc-203336
- Organo/Limonene Mount, non-toxic alternative to Permount, 100 ml: sc-45087
- UltraCruz® Mounting Medium, aqueous-based, 10 ml: sc-24941
- ImmunoHistoMount, aqueous-based mounting medium, 30 ml: sc-45086
- Immuno In Situ Mount, for use with *in situ* hybridization, 30 ml: sc-45088
- Paraffin, for the preparation of tissue samples for staining, 500 g: sc-286633
- Xylenes, mixed isomers with ethylbenzene, 500 ml: sc-237422
- Hematoxylin, Gill's Formulation #2; nuclear counter stain, 100 ml: sc-24973

DATA



HEB (A-20): sc-357. Indirect, intracellular FCM analysis of fixed and permeabilized Jurkat cells stained with HEB (A-20), followed by PerCP-conjugated mouse anti-rabbit IgG: sc-45098. Black line histogram represents the isotype control, normal rabbit IgG: sc-3888.

SELECT PRODUCT CITATIONS

- Wu, J., et al. 2015. Dopamine inhibits the function of Gr-1⁺CD115⁺ myeloid-derived suppressor cells through D1-like receptors and enhances anti-tumor immunity. *J. Leukoc. Biol.* 97: 191-200.

RESEARCH USE

For research use only, not for use in diagnostic procedures.