

# Sall4 (C-15): sc-46045

## BACKGROUND

Sall3 (SALL3, sal-like 3) and Sall4 (SALL4, sal-like 4) are mammalian homologs of the *Drosophila* region-specific homeotic gene spalt, which encodes a zinc finger-containing transcription regulator. *Drosophila* spalt is an essential genetic component required for the specification of posterior head and anterior tail as opposed to trunk. Sall3 is expressed at 24 weeks of gestation in several regions of the human fetal brain including neurons of the hippocampus formation and of mediodorsal and ventrolateral thalamic nuclei, Purkinje cells of the cerebellum, and a subset of neurons in the brainstem. Sall4 expression in early mouse embryos is gradually confined to the head region and the primitive streak, followed by prominent expression in the developing midbrain, branchial arches, limbs and genital papilla.

## CHROMOSOMAL LOCATION

Genetic locus: SALL4 (human) mapping to 20q13.2; Sall4 (mouse) mapping to 2 H3.

## SOURCE

Sall4 (C-15) is an affinity purified goat polyclonal antibody raised against a peptide mapping at the C-terminus of Sall4 of human origin.

## PRODUCT

Each vial contains 200 µg IgG in 1.0 ml of PBS with < 0.1% sodium azide and 0.1% gelatin.

Blocking peptide available for competition studies, sc-46045 P, (100 µg peptide in 0.5 ml PBS containing < 0.1% sodium azide and 0.2% BSA).

## APPLICATIONS

Sall4 (C-15) is recommended for detection of Sall4 of mouse, rat and human origin by Western Blotting (starting dilution 1:200, dilution range 1:100-1:1000), immunoprecipitation [1-2 µg per 100-500 µg of total protein (1 ml of cell lysate)], immunofluorescence (starting dilution 1:50, dilution range 1:50-1:500) and solid phase ELISA (starting dilution 1:30, dilution range 1:30-1:3000).

Sall4 (C-15) is also recommended for detection of Sall4 in additional species, including equine, canine, bovine, porcine and avian.

Suitable for use as control antibody for Sall4 siRNA (h): sc-45808, Sall4 siRNA (m): sc-45809, Sall4 shRNA Plasmid (h): sc-45808-SH, Sall4 shRNA Plasmid (m): sc-45809-SH, Sall4 shRNA (h) Lentiviral Particles: sc-45808-V and Sall4 shRNA (m) Lentiviral Particles: sc-45809-V.

Sall4 (C-15) X TransCruz antibody is recommended for Gel Supershift and ChIP applications.

Molecular Weight of Sall4 isoform A: 165 kDa.

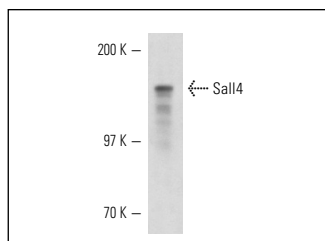
Molecular Weight of Sall4 isoform B: 95 kDa.

Positive Controls: HeLa nuclear extract: sc-2120, Hep G2 cell lysate: sc-2227 or P19 cell lysate: sc-24760.

## RECOMMENDED SECONDARY REAGENTS

To ensure optimal results, the following support (secondary) reagents are recommended: 1) Western Blotting: use donkey anti-goat IgG-HRP: sc-2020 (dilution range: 1:2000-1:100,000) or Cruz Marker™ compatible donkey anti-goat IgG-HRP: sc-2033 (dilution range: 1:2000-1:5000), Cruz Marker™ Molecular Weight Standards: sc-2035, TBS Blotto A Blocking Reagent: sc-2333 and Western Blotting Luminol Reagent: sc-2048. 2) Immunoprecipitation: use Protein A/G PLUS-Agarose: sc-2003 (0.5 ml agarose/2.0 ml). 3) Immunofluorescence: use donkey anti-goat IgG-FITC: sc-2024 (dilution range: 1:100-1:400) or donkey anti-goat IgG-TR: sc-2783 (dilution range: 1:100-1:400) with UltraCruz™ Mounting Medium: sc-24941.

## DATA



Sall4 (C-15): sc-46045. Western blot analysis of Sall4 expression in P19 whole cell lysate.

## SELECT PRODUCT CITATIONS

1. Abboud, N., et al. 2015. A cohesin-OCT4 complex mediates Sox enhancers to prime an early embryonic lineage. *Nat. Commun.* 6: 6749.

## STORAGE

Store at 4° C, **\*\*DO NOT FREEZE\*\***. Stable for one year from the date of shipment. Non-hazardous. No MSDS required.

## RESEARCH USE

For research use only, not for use in diagnostic procedures.

## PROTOCOLS

See our web site at [www.scbt.com](http://www.scbt.com) or our catalog for detailed protocols and support products.


 MONOS  
Satisfaction  
Guaranteed

Try **Sall4 (G-3): sc-166033** or **Sall4 (F-2): sc-377432**, our highly recommended monoclonal alternatives to Sall4 (C-15).