

Myozenin 2 (N-12): sc-46175

BACKGROUND

The calcineurin-binding protein Myozenin 2, also designated cal sarcin-1, is a member of the cal sarcin protein family. Calcineurin is a calcium- and calmodulin-dependent protein phosphatase that is involved in controlling the slow fiber gene expression in skeletal muscle and hypertrophy of cardiac muscle. The cal sarcins are sarcomeric proteins that couple calcineurin and muscle activity. In cardiac and skeletal muscle cells, Myozenin 2 binds calcineurin to α -actinin at the Z-line of the sarcomere. During embryogenesis, Myozenin 1 and 2 are expressed in developing muscle. The Myozenin 2 gene maps to chromosome 4q and is expressed specifically in adult cardiac and slow-twitch skeletal muscle, while Myozenin 1 is only detected in fast skeletal muscle.

REFERENCES

- Ahmad, F., et al. 2000. Identification and characterization of a novel gene (C4orf5) located on human chromosome 4q with specific expression in cardiac and skeletal muscle. *Genomics* 70: 347-353.
- Frey, N., et al. 2000. Cal sarcins, a novel family of sarcomeric calcineurin-binding proteins. *Proc. Natl. Acad. Sci. USA* 97: 14632-14637.
- Faulkner, G., et al. 2000. FATZ, a Filamin-, Actinin-, and Telethonin-binding protein of the Z-disc of skeletal muscle. *J. Biol. Chem.* 275: 41234-41242.
- Takada, F., et al. 2001. Myozenin: an α -Actinin- and γ -Filamin-binding protein of skeletal muscle Z-lines. *Proc. Natl. Acad. Sci. USA* 98: 1595-1600.
- Hayashi, T., et al. 2004. TCAP gene mutations in hypertrophic cardiomyopathy and dilated cardiomyopathy. *J. Am. Coll. Cardiol.* 44: 2192-2201.
- Frey, N., et al. 2004. Mice lacking cal sarcin-1 are sensitized to calcineurin signaling and show accelerated cardiomyopathy in response to pathological biomechanical stress. *Nat. Med.* 10: 1336-1343.
- Martin, L.J., et al. 2004. Major quantitative trait locus for resting heart rate maps to a region on chromosome 4. *Hypertension* 43: 1146-1151.

CHROMOSOMAL LOCATION

Genetic locus: MYOZ2 (human) mapping to 4q26-q27; Myoz2 (mouse) mapping to 3 G3.

SOURCE

Myozenin 2 (N-12) is an affinity purified goat polyclonal antibody raised against a peptide mapping near the N-terminus of Myozenin 2 of mouse origin.

PRODUCT

Each vial contains 200 μ g IgG in 1.0 ml of PBS with < 0.1% sodium azide and 0.1% gelatin.

Blocking peptide available for competition studies, sc-46175 P, (100 μ g peptide in 0.5 ml PBS containing < 0.1% sodium azide and 0.2% BSA).

STORAGE

Store at 4° C, ****DO NOT FREEZE****. Stable for one year from the date of shipment. Non-hazardous. No MSDS required.

APPLICATIONS

Myozenin 2 (N-12) is recommended for detection of Myozenin 2 of mouse, rat and human origin by Western Blotting (starting dilution 1:200, dilution range 1:100-1:1000), immunoprecipitation [1-2 μ g per 100-500 μ g of total protein (1 ml of cell lysate)], immunofluorescence (starting dilution 1:50, dilution range 1:50-1:500) and solid phase ELISA (starting dilution 1:30, dilution range 1:30-1:3000); may cross-react with Myozenin 3.

Suitable for use as control antibody for Myozenin 2 siRNA (h): sc-45710, Myozenin 2 siRNA (m): sc-45711, Myozenin 2 shRNA Plasmid (h): sc-45710-SH, Myozenin 2 shRNA Plasmid (m): sc-45711-SH, Myozenin 2 shRNA (h) Lentiviral Particles: sc-45710-V and Myozenin 2 shRNA (m) Lentiviral Particles: sc-45711-V.

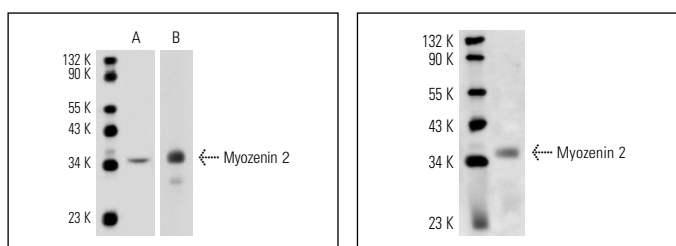
Molecular Weight of Myozenin 2: 34 kDa.

Positive Controls: mouse heart extract: sc-2254 or rat skeletal muscle extract: sc-364810.

RECOMMENDED SECONDARY REAGENTS

To ensure optimal results, the following support (secondary) reagents are recommended: 1) Western Blotting: use donkey anti-goat IgG-HRP: sc-2020 (dilution range: 1:2000-1:100,000) or Cruz Marker™ compatible donkey anti-goat IgG-HRP: sc-2033 (dilution range: 1:2000-1:5000), Cruz Marker™ Molecular Weight Standards: sc-2035, TBS Blotto A Blocking Reagent: sc-2333 and Western Blotting Luminol Reagent: sc-2048. 2) Immunoprecipitation: use Protein A/G PLUS-Agarose: sc-2003 (0.5 ml agarose/2.0 ml). 3) Immunofluorescence: use donkey anti-goat IgG-FITC: sc-2024 (dilution range: 1:100-1:400) or donkey anti-goat IgG-TR: sc-2783 (dilution range: 1:100-1:400) with UltraCruz™ Mounting Medium: sc-24941.

DATA



Myozenin 2 (N-12): sc-46175. Western blot analysis of Myozenin 2 expression in rat skeletal (A) and mouse heart (B) muscle tissue extract.

Myozenin 2 (N-12): sc-46175. Western blot analysis of Myozenin 2 expression in mouse heart tissue extract.

RESEARCH USE

For research use only, not for use in diagnostic procedures.

MONOS
Satisfaction
Guaranteed

Try **Myozenin 2 (E-11): sc-377359** or **Myozenin 2 (B-4): sc-373876**, our highly recommended monoclonal alternatives to Myozenin 2 (N-12).